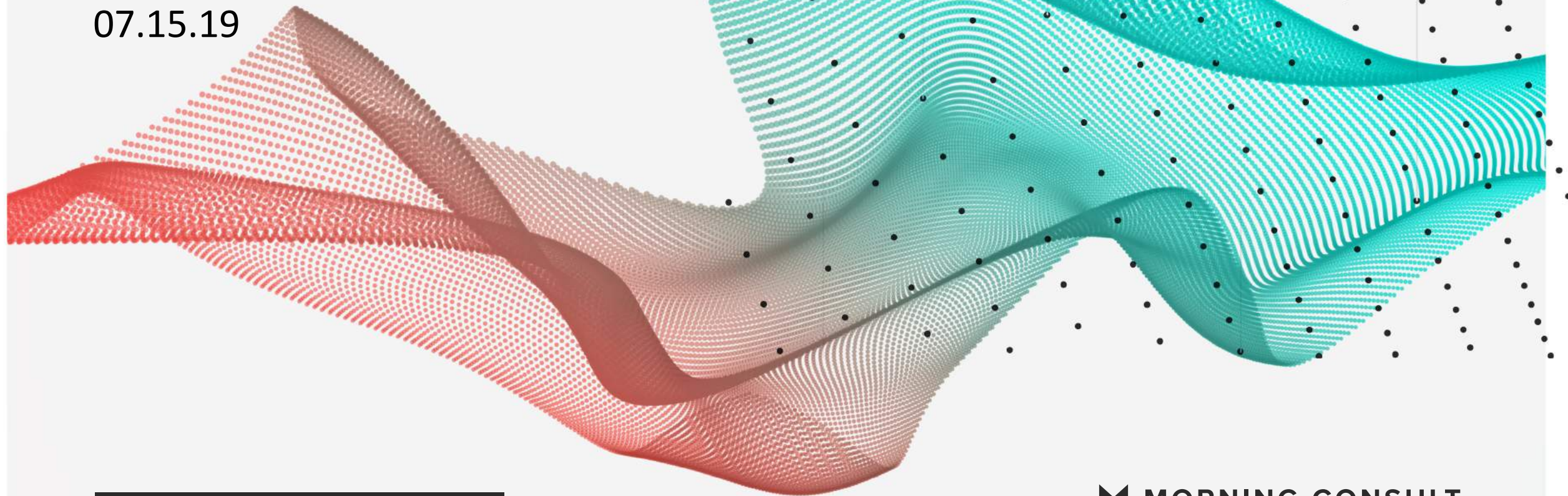


POLITICAL INTELLIGENCE /

07.15.19



2020 PRIMARIES /

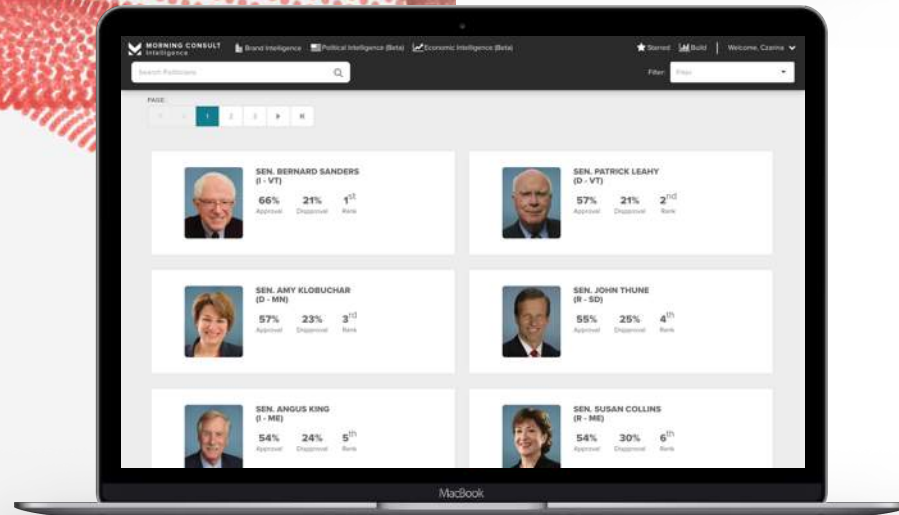
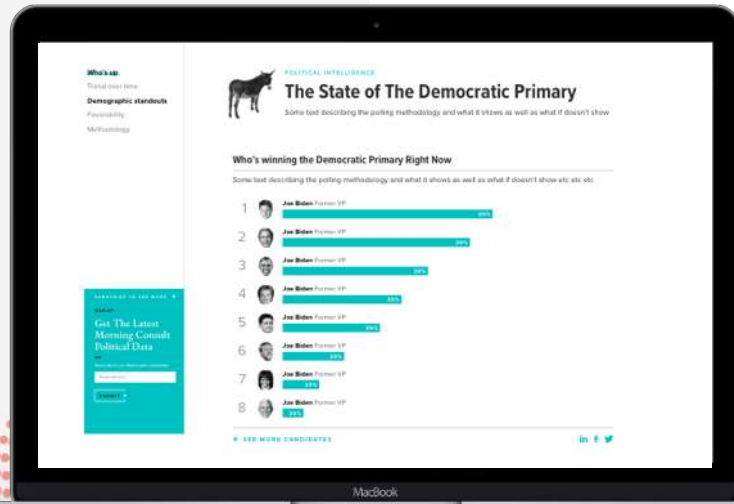
 MORNING CONSULT

ABOUT POLITICAL INTELLIGENCE

Morning Consult is setting a new standard for survey research.

On a daily basis, Morning Consult interviews over 5,000 registered voters across the United States. Along with 2020 presidential election data, Political Intelligence tracks the approval and electability for all governors, senators, House members, the President, and more at the national, state, and congressional district level.

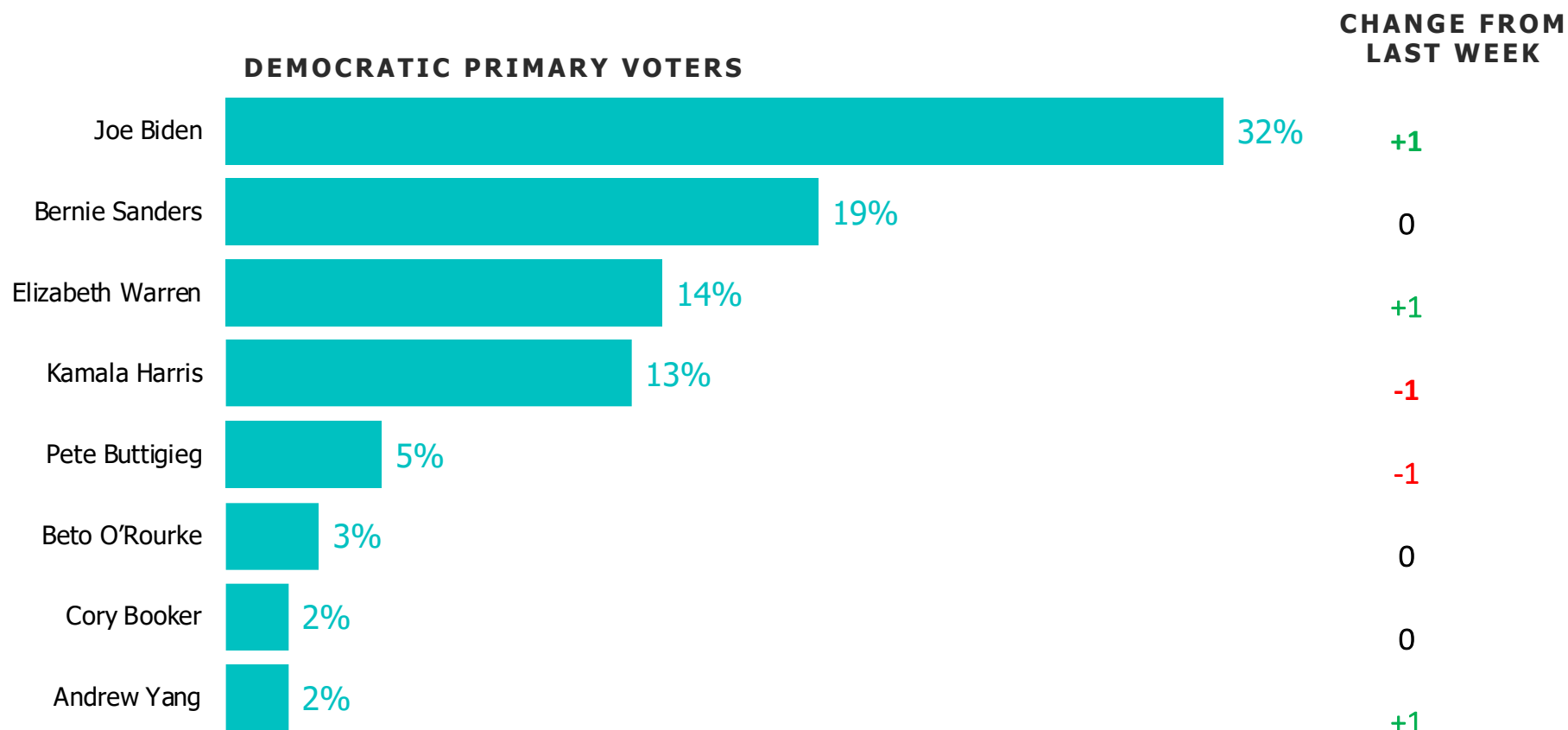
Each week, this report will use that data to deliver key new insights on where voters stand.



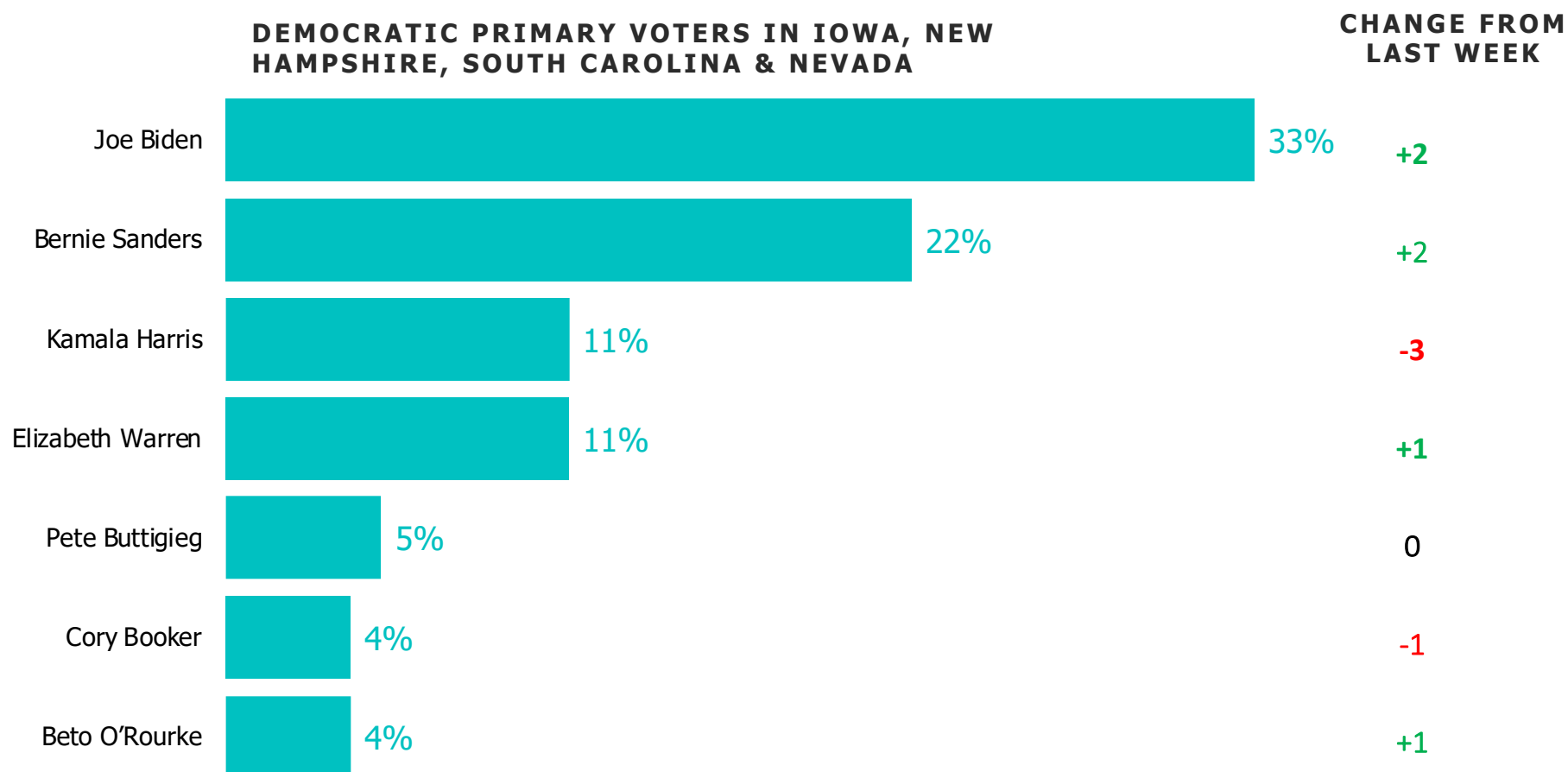
KEY TAKEAWAYS / 07.15.19

1. **Biden maintains his lead:** After dropping significantly in the polls following the debates, Biden gained 1 point from last week, and now has 32% of the vote share.
 - Biden has still lost close to 10-points since his post-announcement peak at 40%.
2. **Harris' climb is evident in second-choice selections:** Kamala Harris is the second choice vote for Warren, Buttigieg, and Booker supporters, illustrating her rise as a top-tier candidate.

WHO'S LEADING THE DEMOCRATIC PRIMARY/ ALL DEMOCRATIC PRIMARY VOTERS

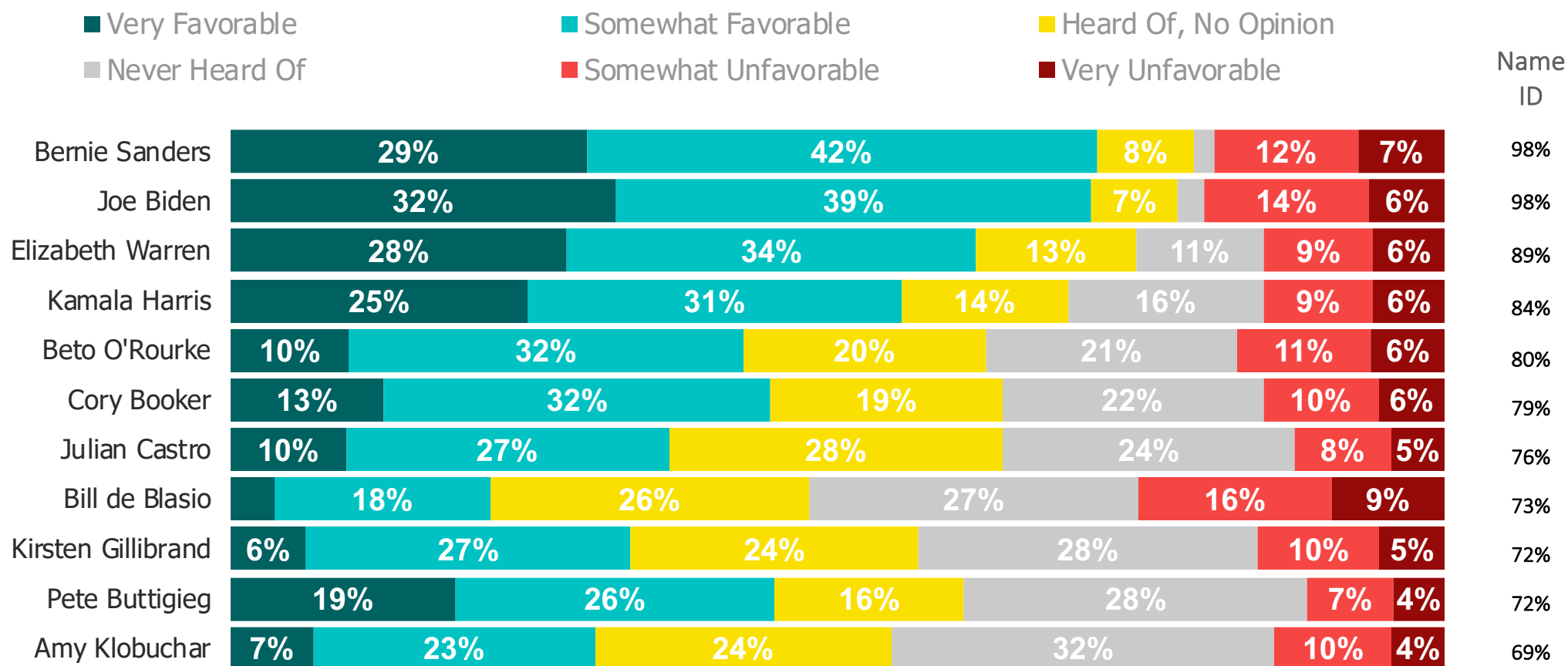


WHO'S LEADING THE DEMOCRATIC PRIMARY / EARLY PRIMARY STATES



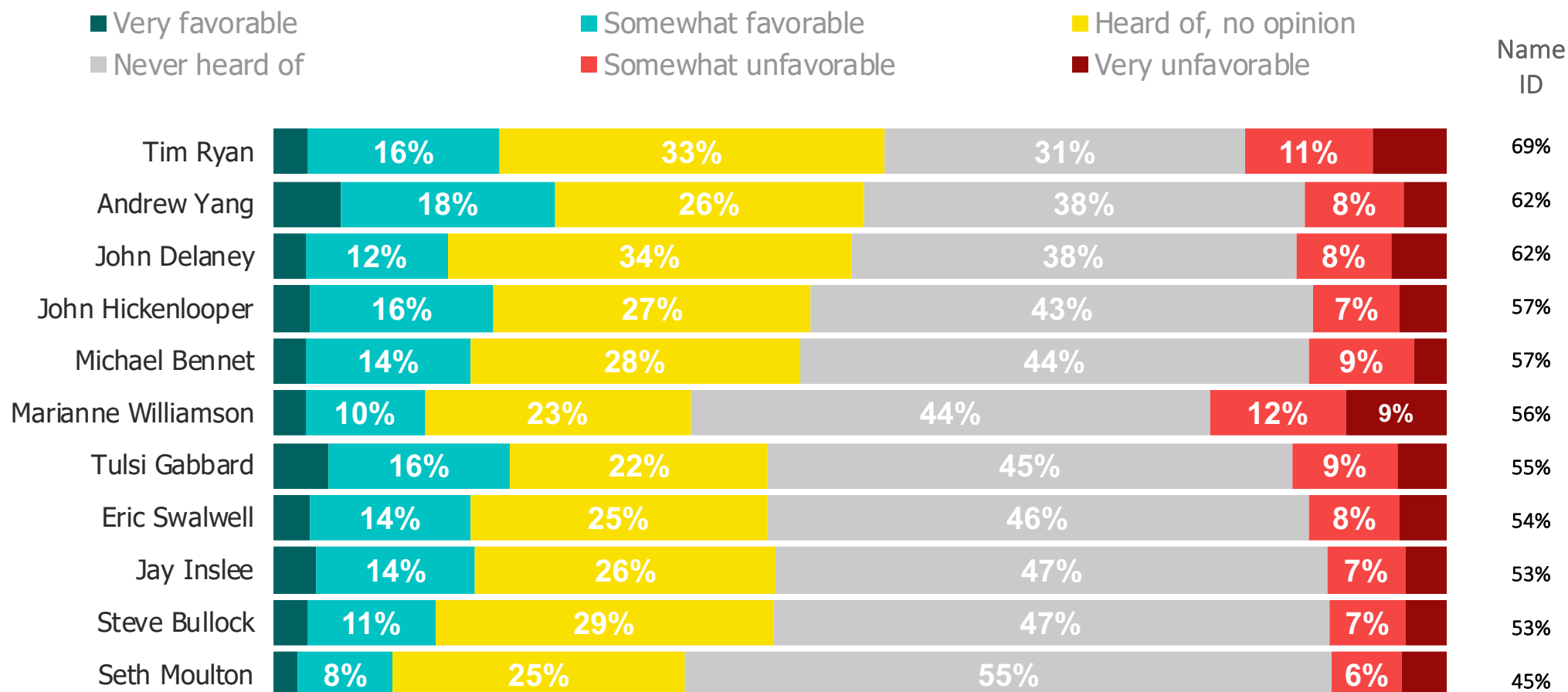
TRACKING FAVORABILITY AND NAME RECOGNITION

Ordered by name ID



TRACKING FAVORABILITY AND NAME RECOGNITION

Ordered by name ID



WHO'S LEADING THE DEMOCRATIC PRIMARY / SECOND CHOICES

**Biden****32%***current national vote share*

27% Sanders
18% Harris
16% Warren

**Sanders****19%***current national vote share*

32% Biden
23% Warren
8% Harris

**Warren****14%***current national vote share*

31% Harris
21% Sanders
16% Biden

**Harris****13%***current national vote share*

28% Warren
26% Biden
12% Buttigieg

**Buttigieg****5%***current national vote share*

26% Harris
20% Biden
18% Warren

**O'Rourke****3%***current national vote share*

23% Biden
21% Sanders
10% Warren
10% Harris

**Booker****2%***current national vote share*

20% Harris
20% Biden
13% Sanders

**SIGN UP TO RECEIVE THIS
REPORT EARLY EACH WEEK**

CLICK HERE TO SIGN UP

METHODOLOGY /

This week's report features surveys with registered voters conducted from July 8, 2019 to July 14, 2019. The interviews were conducted online and the data were weighted to approximate a target sample of registered voters based on age, race/ethnicity, gender, educational attainment, and region.

Our Democratic Primary results are reported using 16,504 interviews with registered voters who indicate they may vote in the Democratic primary or caucus. For those who say don't know or no opinion, they are asked to pick a candidate they are learning towards, which are factored into the results. The margin of error for potential Democratic primary voters is +/- 1%.

Which Candidates Have Momentum in Early Primary States?

We have included an 'Early Primary States' demographic throughout this report to showcase who has momentum going into the primary elections. The numbers reflect voters who live in Iowa, New Hampshire, South Carolina, and Nevada.

CONTACT



Business Development
BD@MorningConsult.com



News Media
Press@MorningConsult.com

OFFICES

NEW YORK



SAN FRANCISCO



CHICAGO



WASHINGTON

