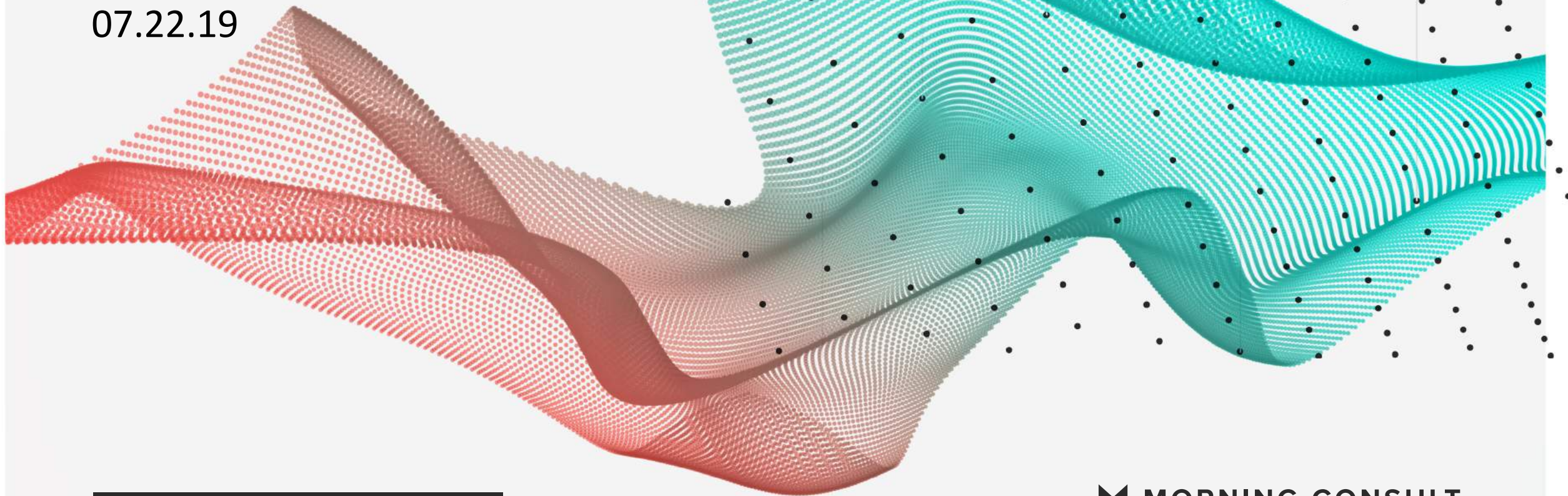


POLITICAL INTELLIGENCE /

07.22.19



2020 PRIMARIES /

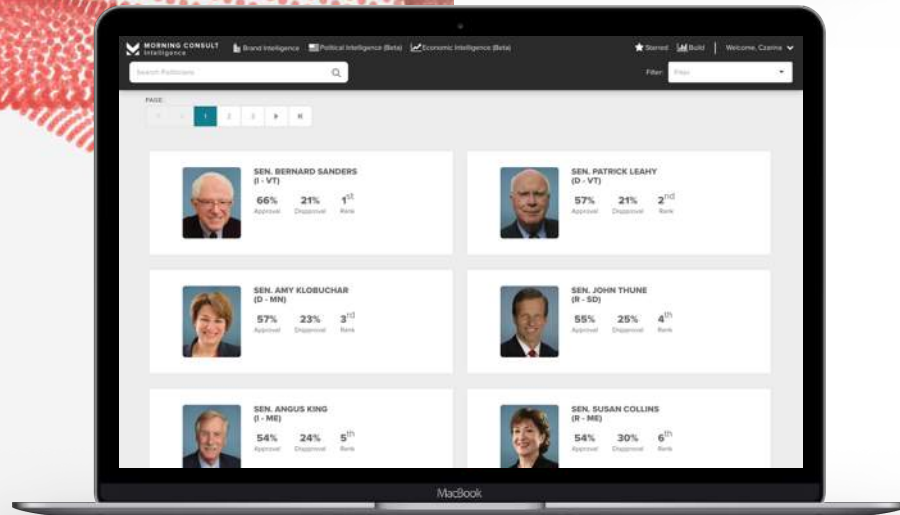
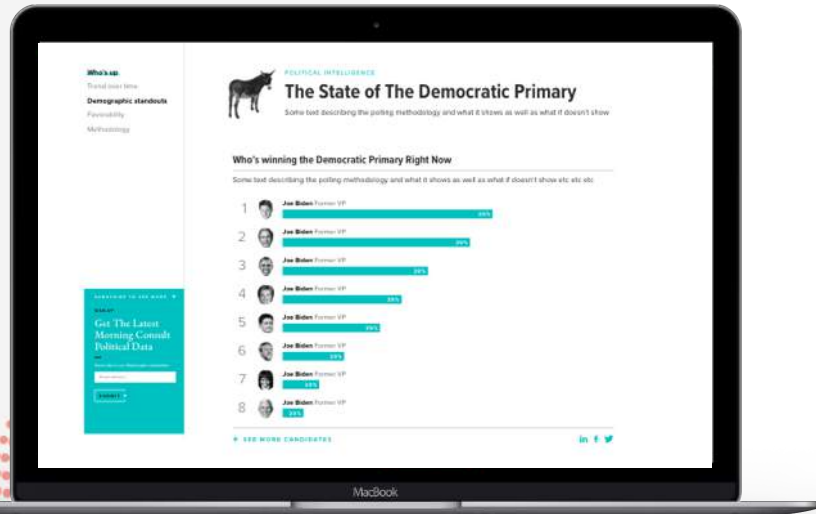
 MORNING CONSULT

ABOUT POLITICAL INTELLIGENCE

Morning Consult is setting a new standard for survey research.

On a daily basis, Morning Consult interviews over 5,000 registered voters across the United States. Along with 2020 presidential election data, Political Intelligence tracks the approval and electability for all governors, senators, House members, the President, and more at the national, state, and congressional district level.

Each week, this report will use that data to deliver key new insights on where voters stand.

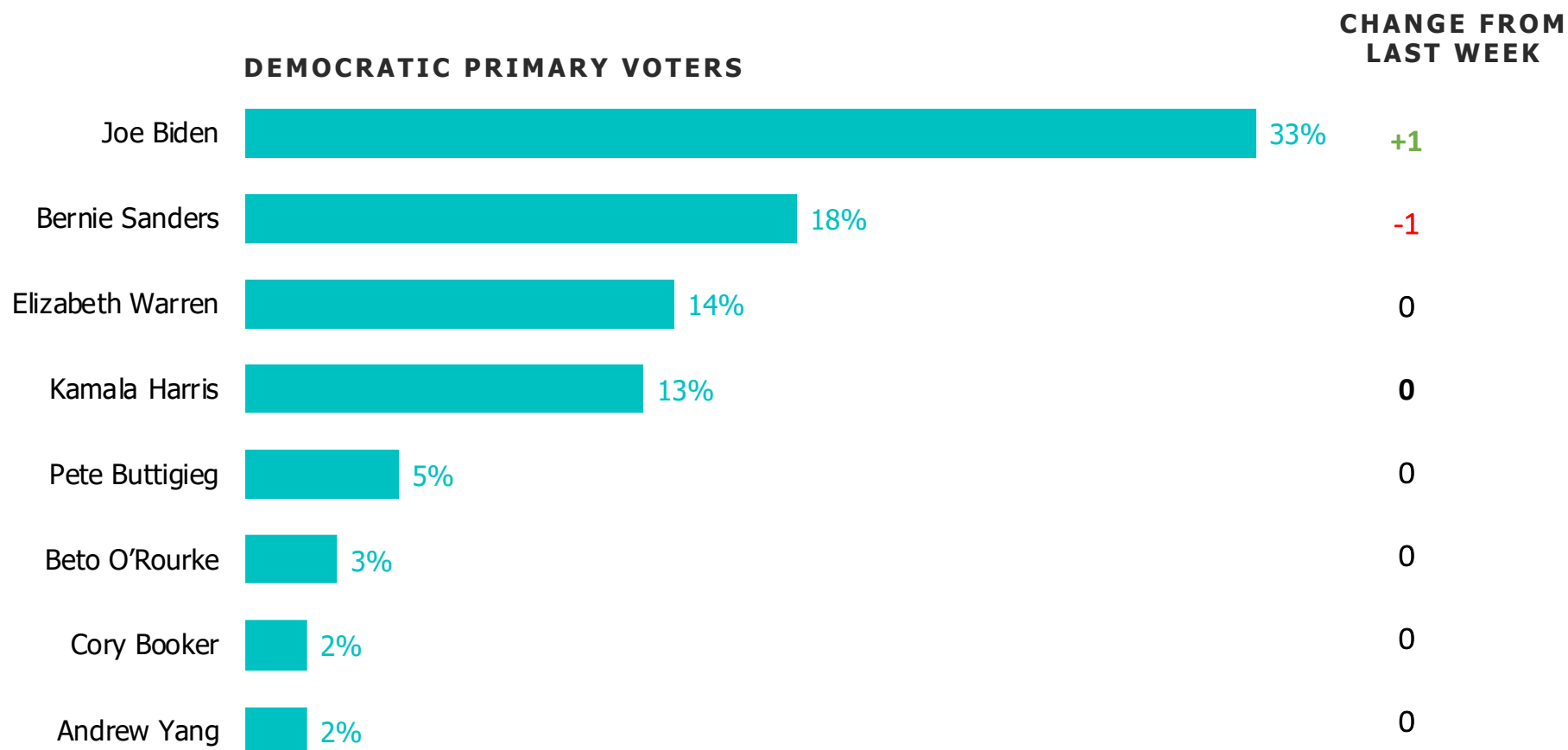


KEY TAKEAWAYS / 07.22.19

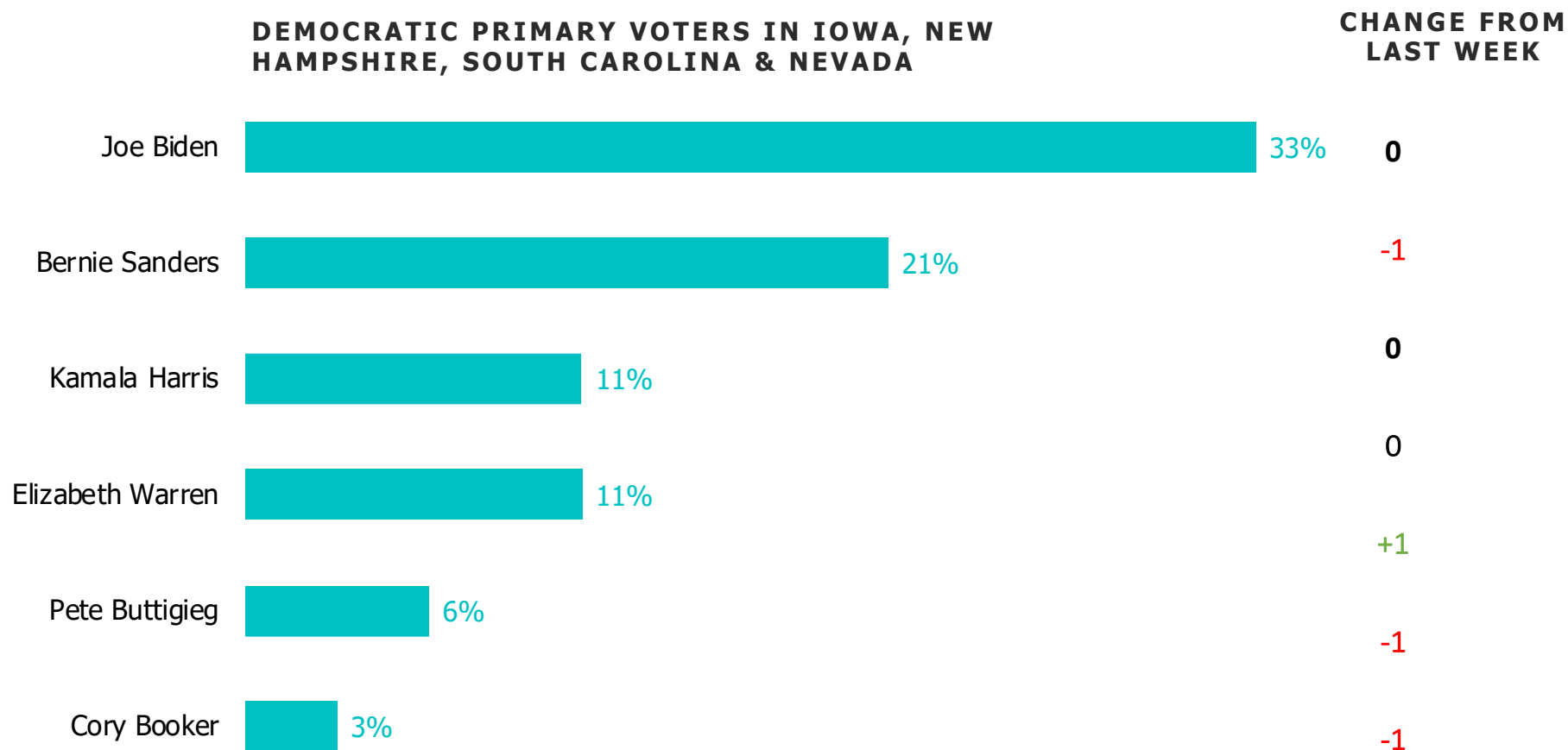
1. **The horserace holds largely steady in the weeks following the first debates.** Biden ticked up another point this week (33%), but still remains behind his initial pre-debate standing at 38%.
2. **Warren's supporters are 84% white,** compared to nearly 7 in 10 of Sanders and Harris' supporters.
 - A majority of both Warren and Harris' supporters have a college degree and are women, though a larger proportion of Warren's supporters are women.
 - Warren's supporters are nearly evenly split among age while Sanders is driven by younger voters and Harris by older voters.



WHO'S LEADING THE DEMOCRATIC PRIMARY/ ALL DEMOCRATIC PRIMARY VOTERS

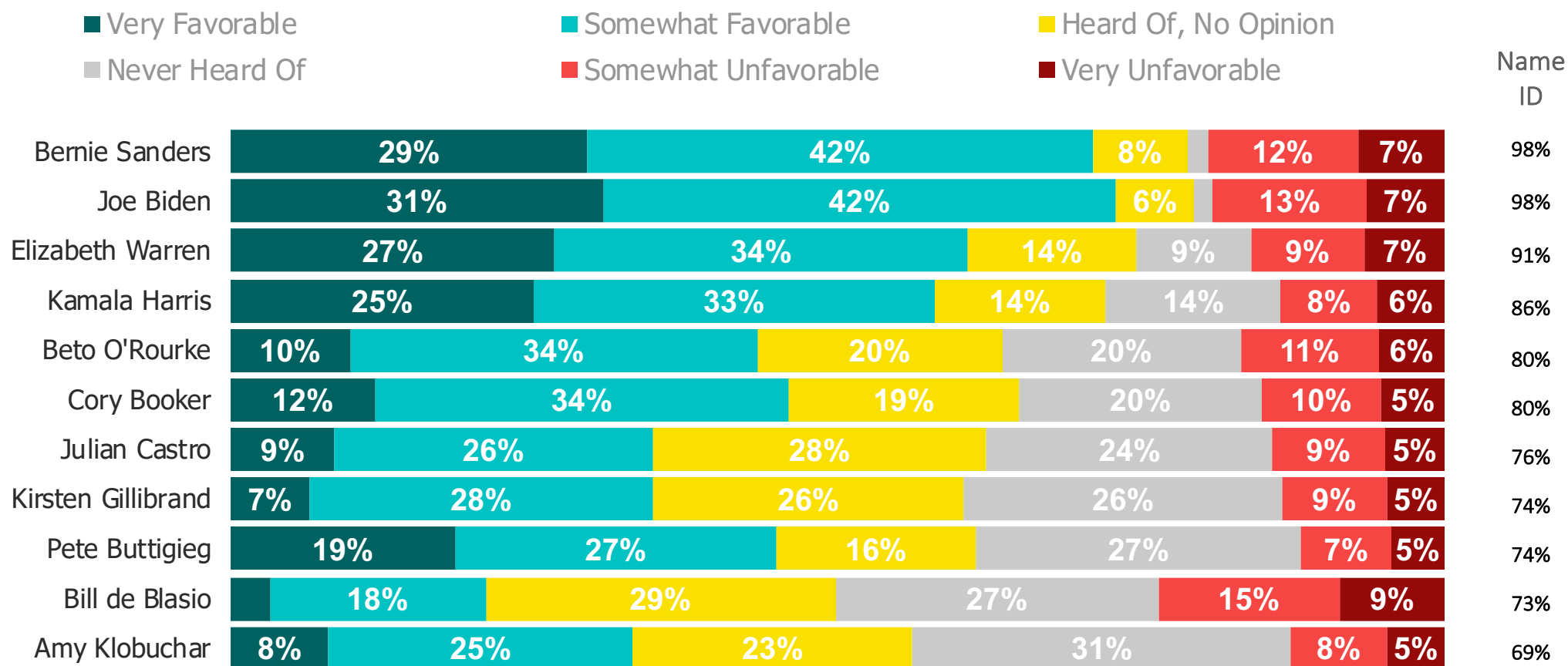


WHO'S LEADING THE DEMOCRATIC PRIMARY / EARLY PRIMARY STATES



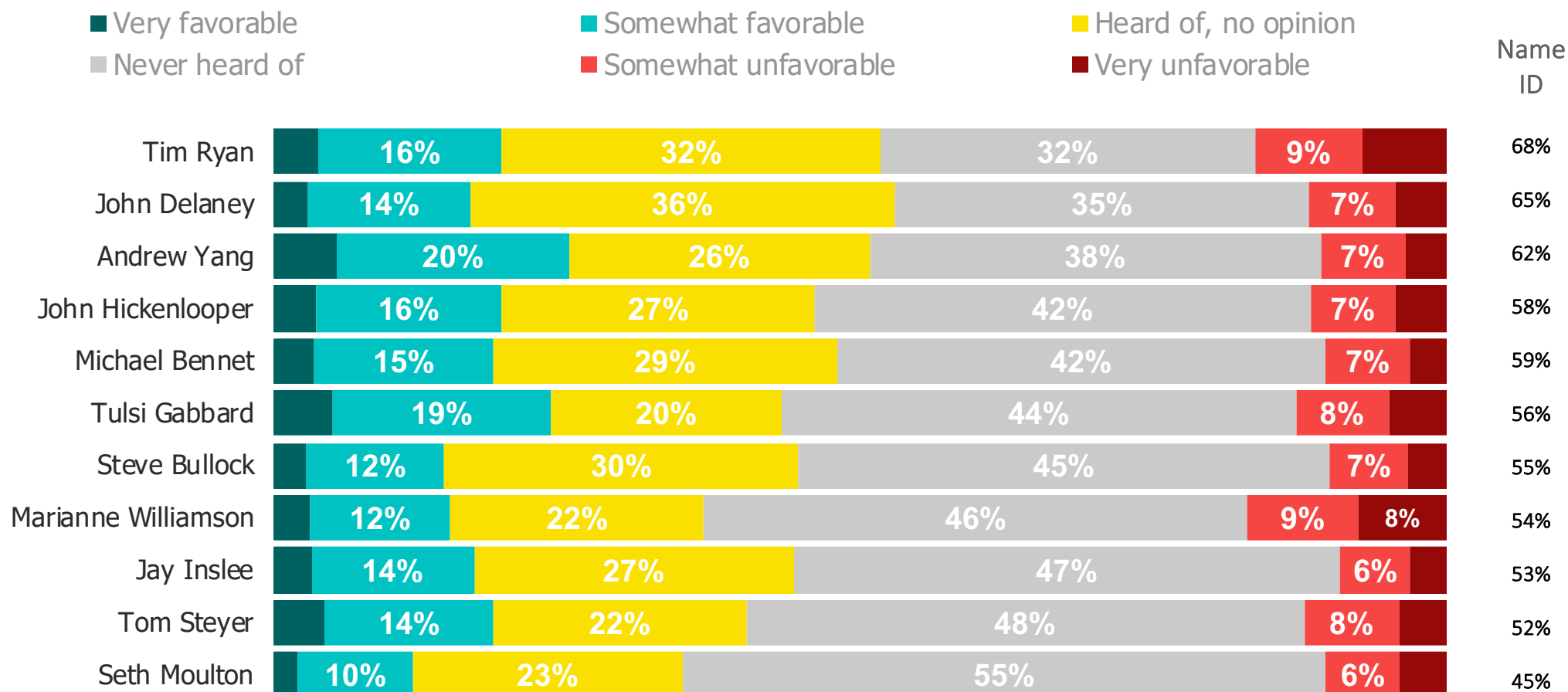
TRACKING FAVORABILITY AND NAME RECOGNITION

Ordered by name ID



TRACKING FAVORABILITY AND NAME RECOGNITION

Ordered by name ID



WHO SUPPORTS WHO? DEMOGRAPHICS OF COALITIONS

A look at the demographic breakdown of supporters for top candidates:



Biden



Sanders



Warren



Harris

Men	44%	50%	40%	46%
Women	56%	50%	60%	54%
Ages < 45	28%	64%	41%	33%
Ages 45+	72%	36%	59%	67%
White	71%	69%	84%	69%
Black	24%	22%	10%	24%
Hispanic	9%	17%	9%	10%
Less than College	61%	66%	43%	49%
College Educated	39%	34%	57%	51%

**SIGN UP TO RECEIVE THIS
REPORT EARLY EACH WEEK**

[CLICK HERE TO SIGN UP](#)

METHODOLOGY /

This week's report features surveys with registered voters conducted from July 15, 2019 to July 21, 2019. The interviews were conducted online and the data were weighted to approximate a target sample of registered voters based on age, race/ethnicity, gender, educational attainment, and region.

Our Democratic Primary results are reported using 17,285 interviews with registered voters who indicate they may vote in the Democratic primary or caucus. For those who say don't know or no opinion, they are asked to pick a candidate they are learning towards, which are factored into the results. The margin of error for potential Democratic primary voters is +/- 1%.

Which Candidates Have Momentum in Early Primary States?

We have included an 'Early Primary States' demographic throughout this report to showcase who has momentum going into the primary elections. The numbers reflect voters who live in Iowa, New Hampshire, South Carolina, and Nevada.

CONTACT



Business Development
BD@MorningConsult.com



News Media
Press@MorningConsult.com

OFFICES

NEW YORK



SAN FRANCISCO



CHICAGO



WASHINGTON

