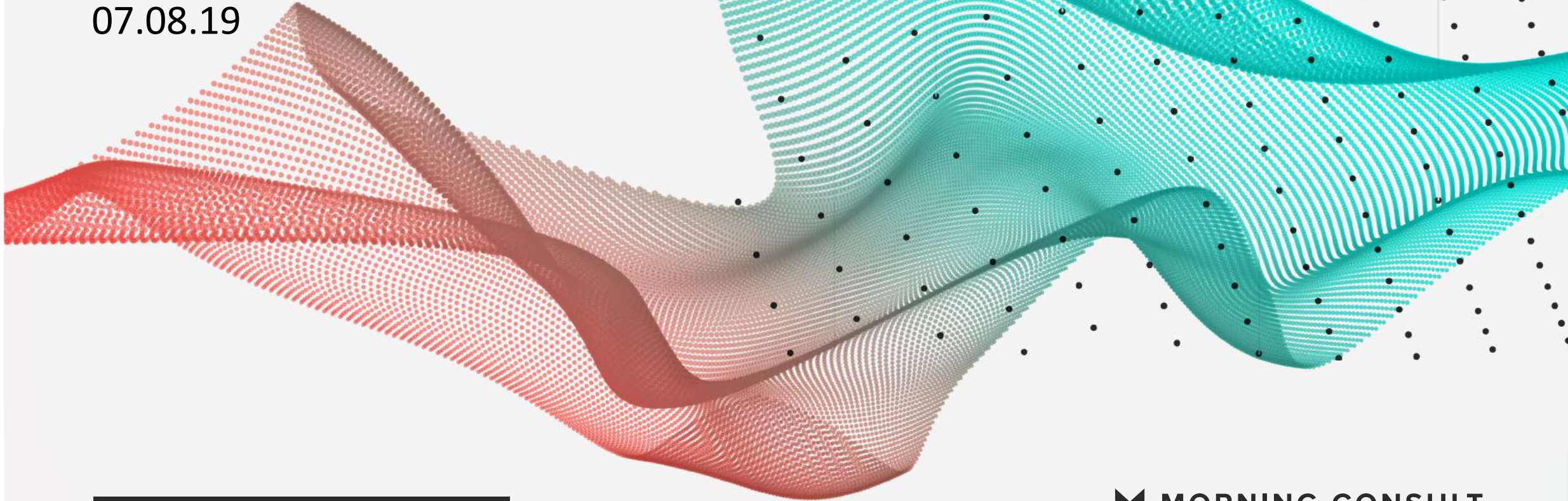


POLITICAL INTELLIGENCE

07.08.19



2020 PRIMARIES /

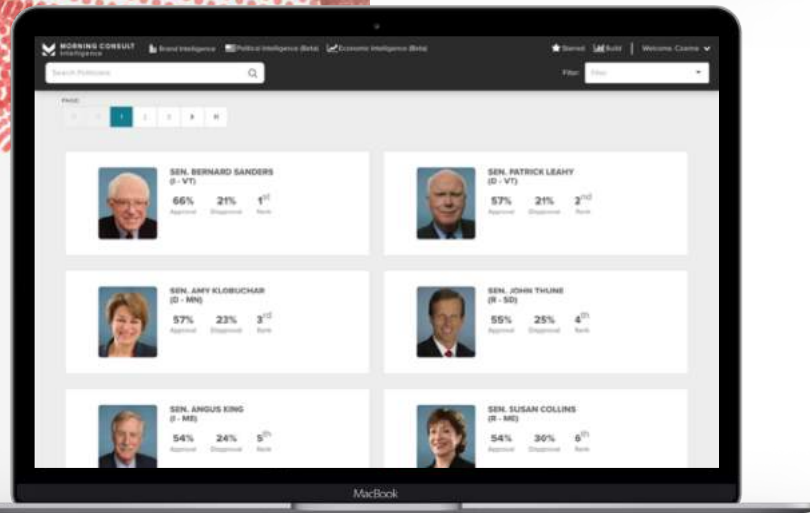
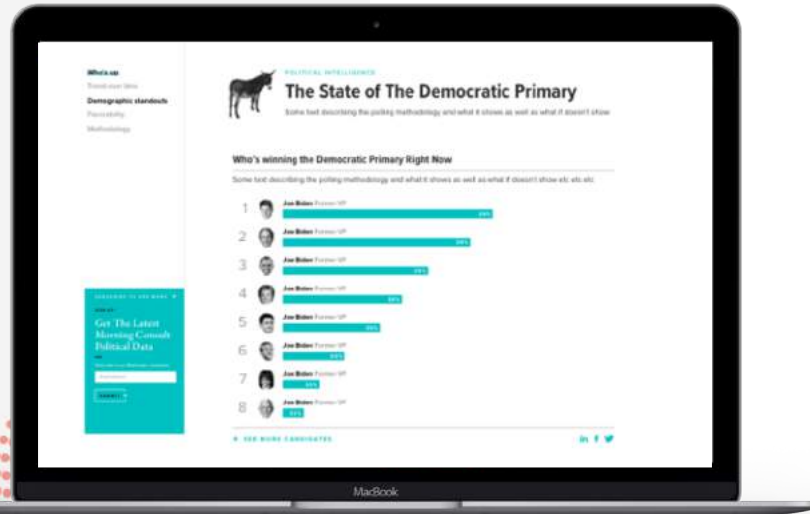
 MORNING CONSULT

ABOUT POLITICAL INTELLIGENCE

Morning Consult is setting a new standard for survey research.

On a daily basis, Morning Consult interviews over 5,000 registered voters across the United States. Along with 2020 presidential election data, Political Intelligence tracks the approval and electability for all governors, senators, House members, the President, and more at the national, state, and congressional district level.

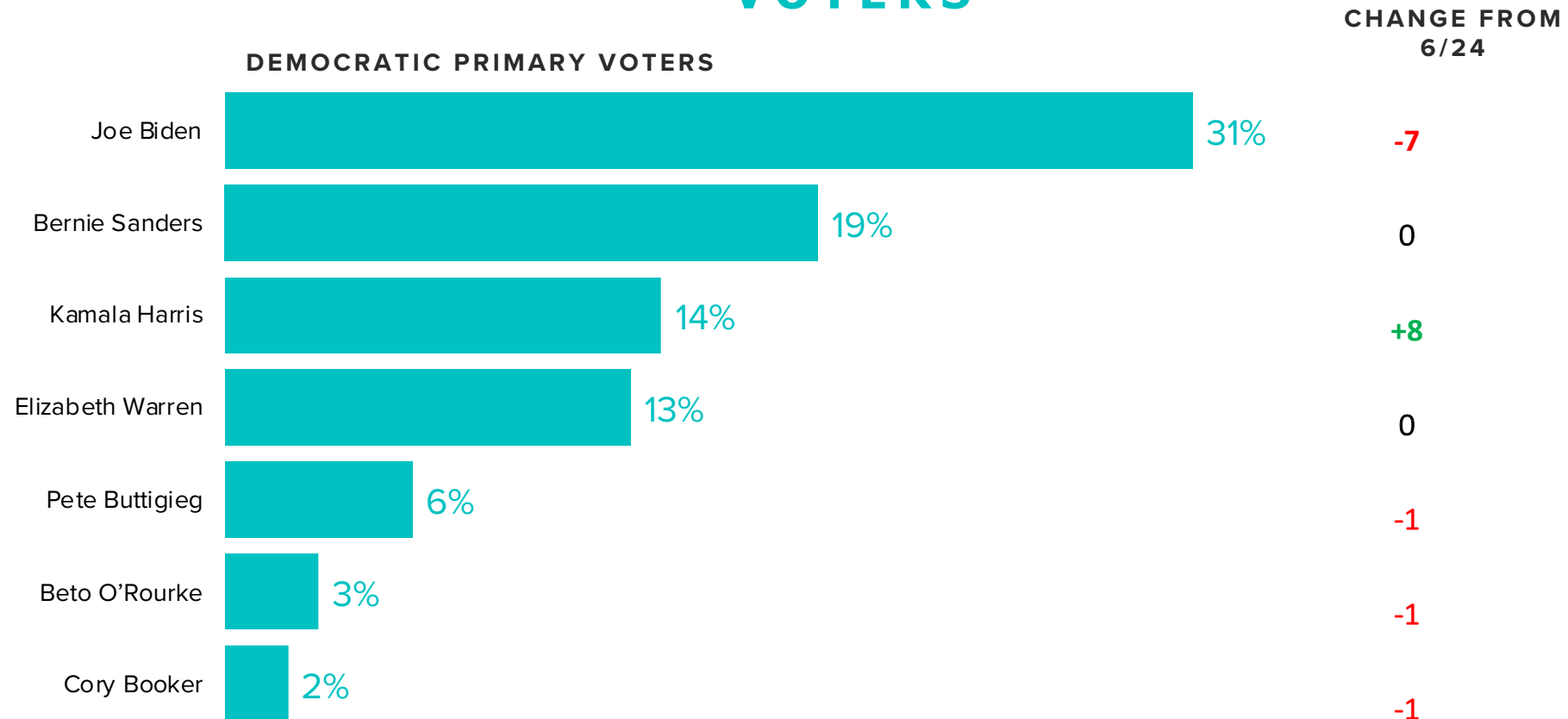
Each week, this report will use that data to deliver key new insights on where voters stand.



KEY TAKEAWAYS/ 07.08.19

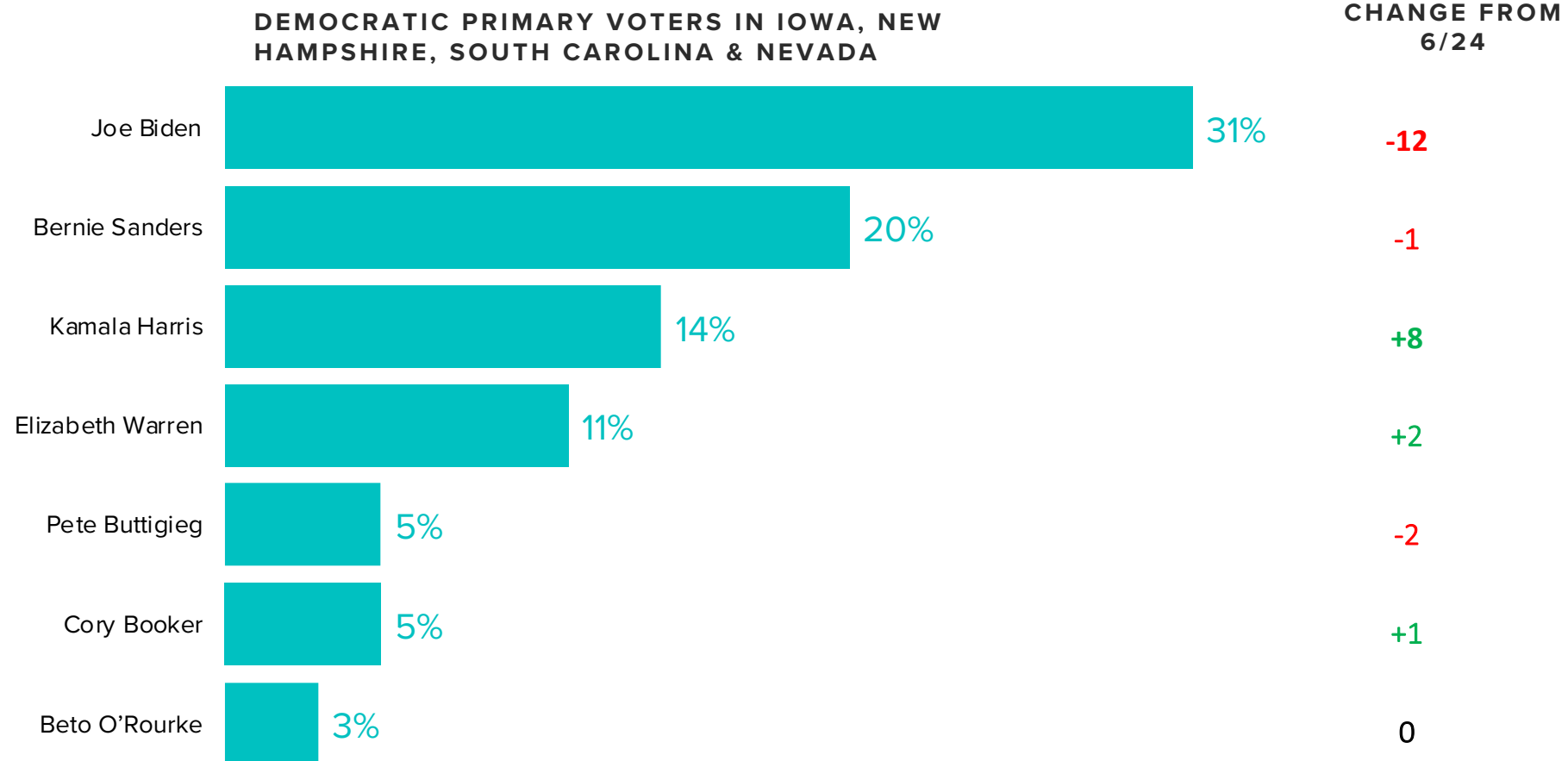
1. **Biden sees a notable drop in support since the first debate.** In the last three weeks, Biden's support has dropped from 38% to 31% of the vote share.
 1. The decline was fueled in part by loss of black support: Biden has lost 8% of the black vote share since the debate.
2. **Harris's ascension continues:** Since the debate, Kamala Harris has gained 8 points and now has 14 percent of the vote share, surpassing Elizabeth Warren for third place.



WHO'S LEADING THE
DEMOCRATIC PRIMARY/ALL DEMOCRATIC PRIMARY
VOTERS

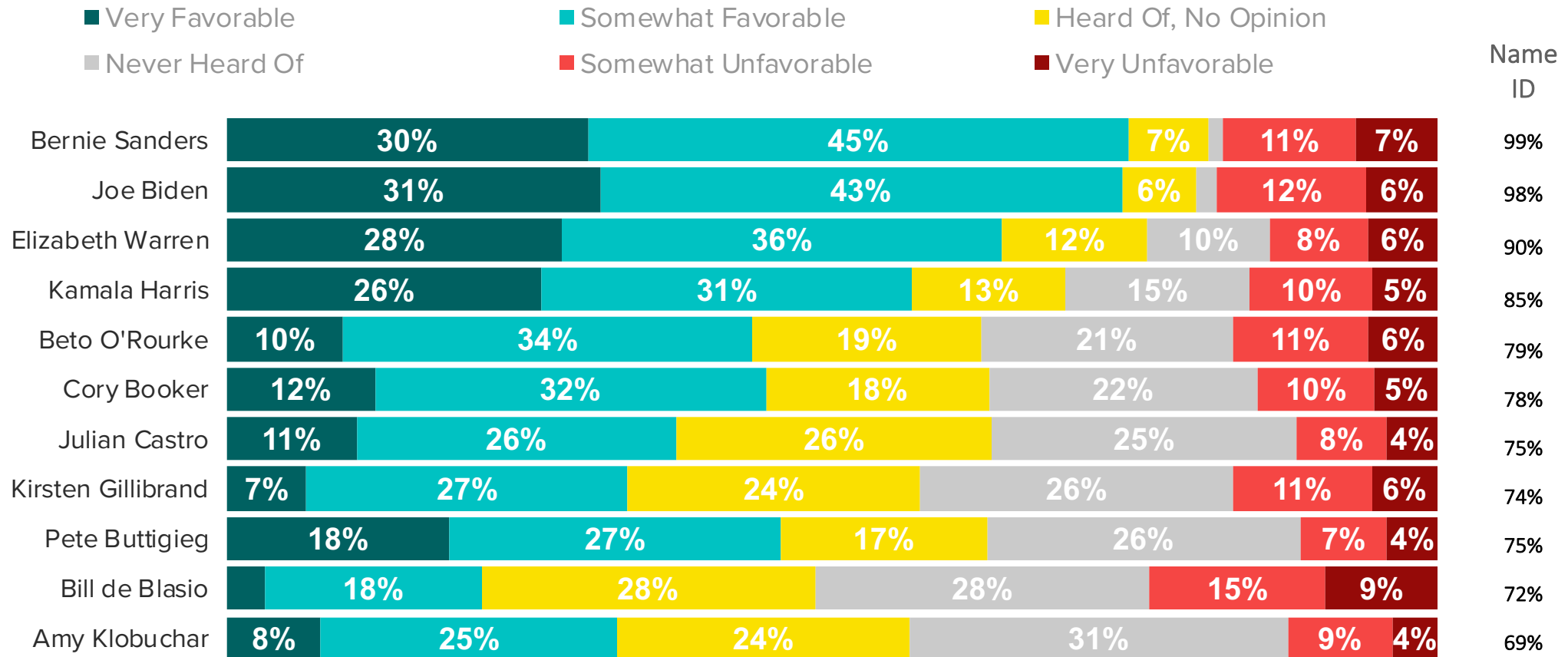
The following candidates received 1% or less of the vote: Amy Klobuchar, Andrew Yang, Kirsten Gillibrand, Julian Castro, Tim Ryan, John Hickenlooper, Tulsi Gabbard, Michael Bennet, John Delaney, Steve Bullock, Bill de Blasio, Jay Inslee, Eric Swalwell, Seth Moulton and Marianne Williamson. "Someone else" received 2%.

WHO'S LEADING THE DEMOCRATIC PRIMARY / EARLY PRIMARY STATES



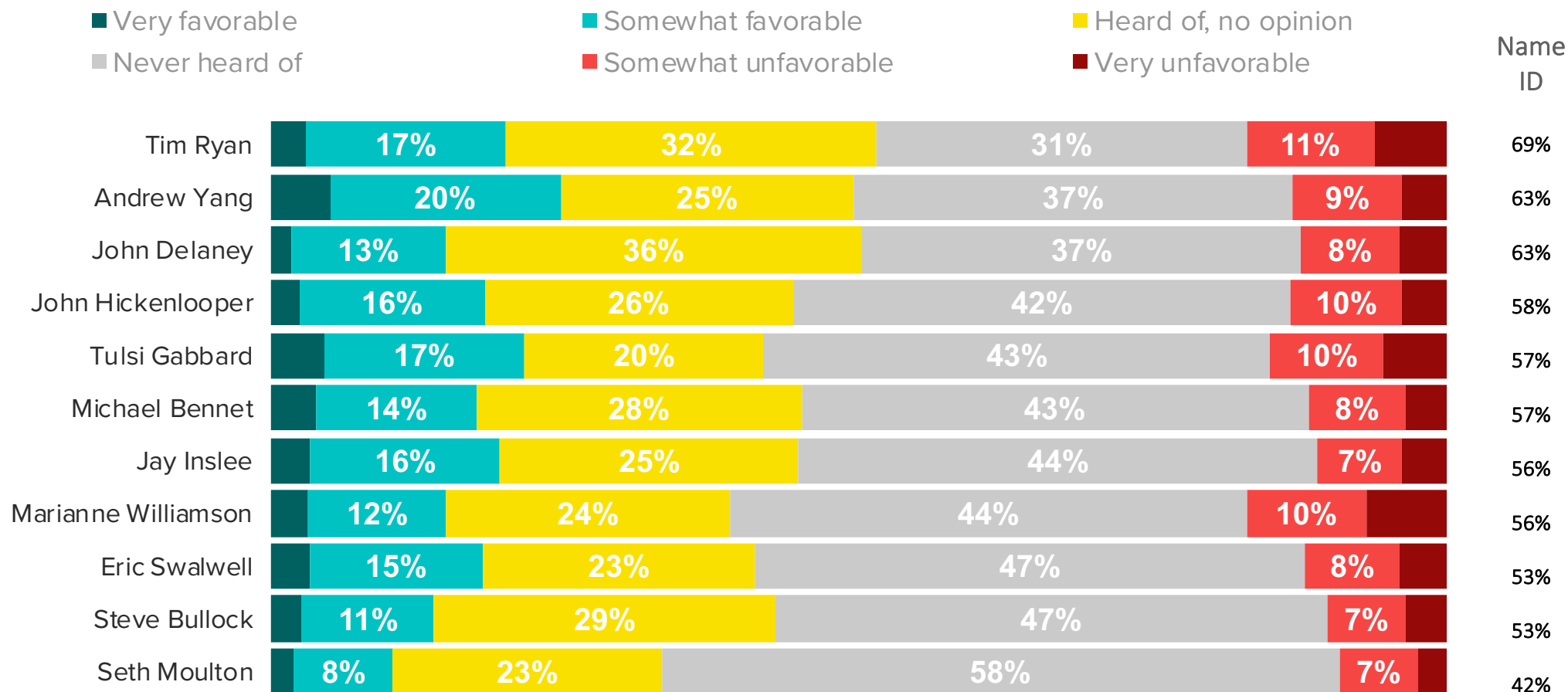
TRACKING FAVORABILITY AND NAME RECOGNITION

Ordered by name ID



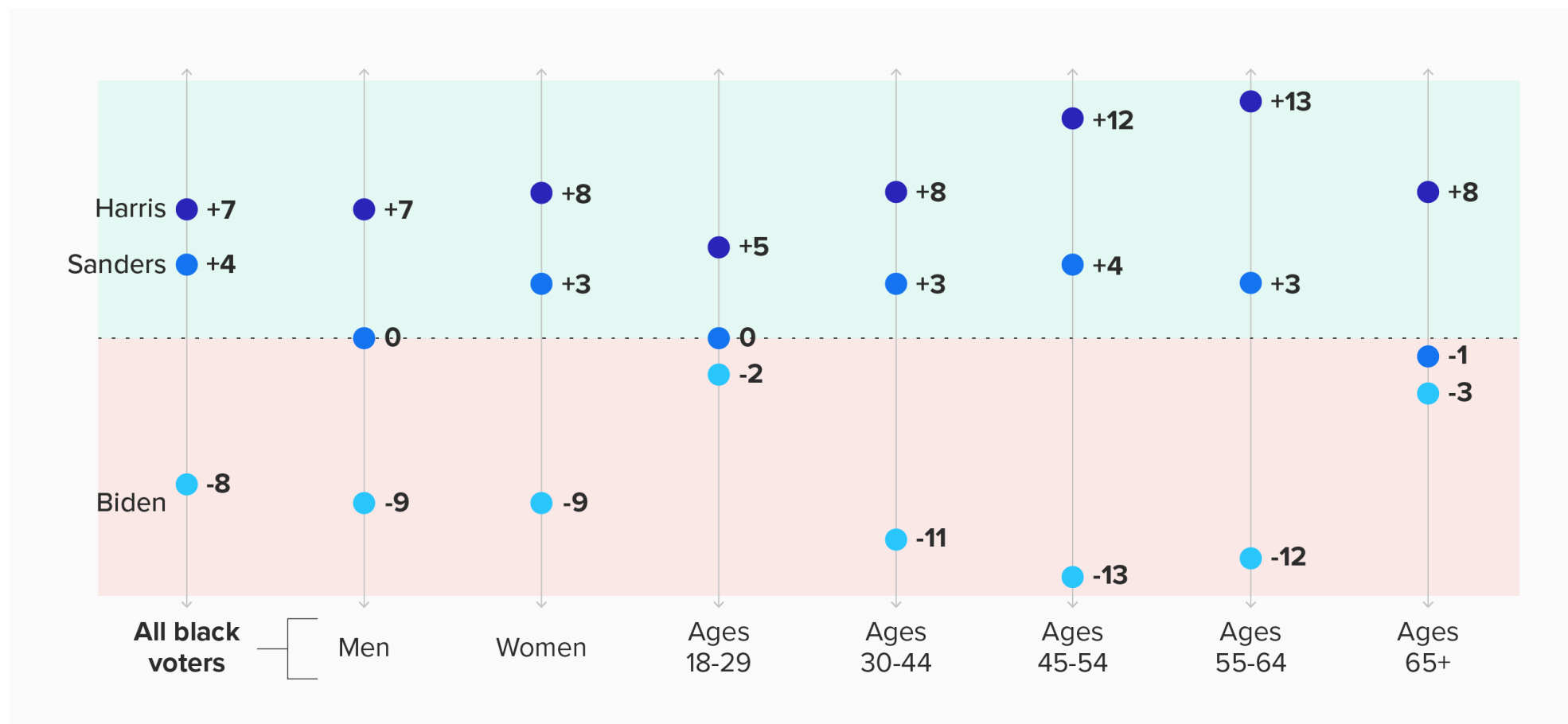
TRACKING FAVORABILITY AND NAME RECOGNITION

Ordered by name ID

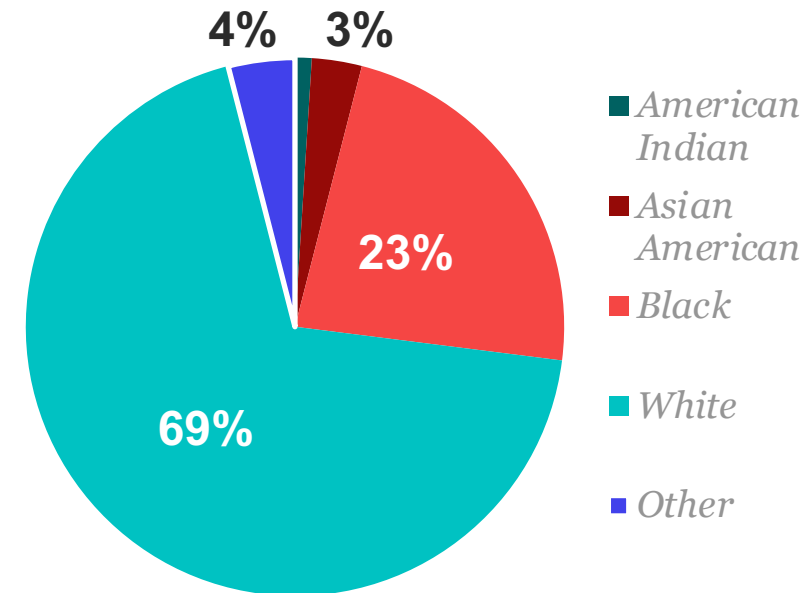
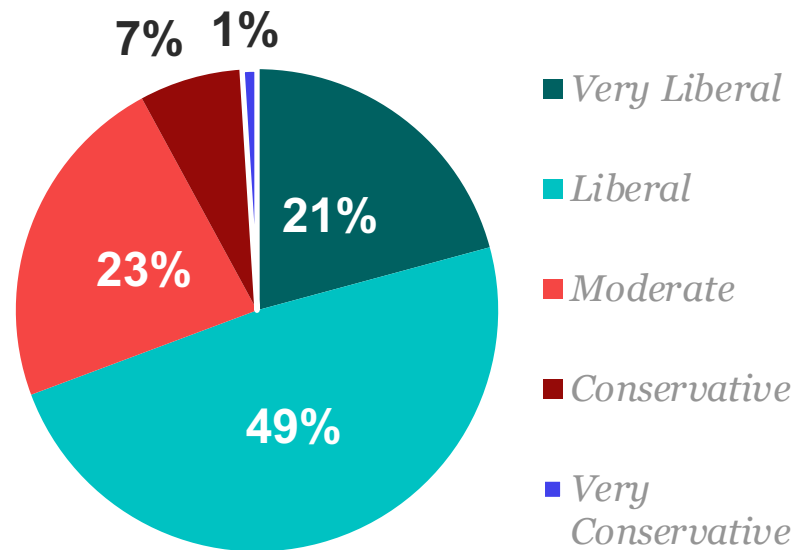


BIDEN FADES, HARRIS GAINS WITH BLACK VOTERS

Difference in first choice support in polls conducted in the weeks before and after the first debate



WHO'S SUPPORTING KAMALA HARRIS?



**SIGN UP TO RECEIVE THIS
REPORT EARLY EACH WEEK**

[CLICK HERE TO SIGN UP](#)



METHODOLOGY /

This week's report features surveys with registered voters conducted from July 1, 2019 to July 7, 2019. The interviews were conducted online and the data were weighted to approximate a target sample of registered voters based on age, race/ethnicity, gender, educational attainment, and region.

Our Democratic Primary results are reported using 16,599 interviews with registered voters who indicate they may vote in the Democratic primary or caucus. For those who say don't know or no opinion, they are asked to pick a candidate they are learning towards, which are factored into the results. The margin of error for potential Democratic primary voters is +/- 1%.

Which Candidates Have Momentum in Early Primary States?

We have included an 'Early Primary States' demographic throughout this report to showcase who has momentum going into the primary elections. The numbers reflect voters who live in Iowa, New Hampshire, South Carolina, and Nevada.



CONTACT



Business Development
BD@MorningConsult.com



News Media
Press@MorningConsult.com

OFFICES

NEW YORK



SAN FRANCISCO



CHICAGO



WASHINGTON

