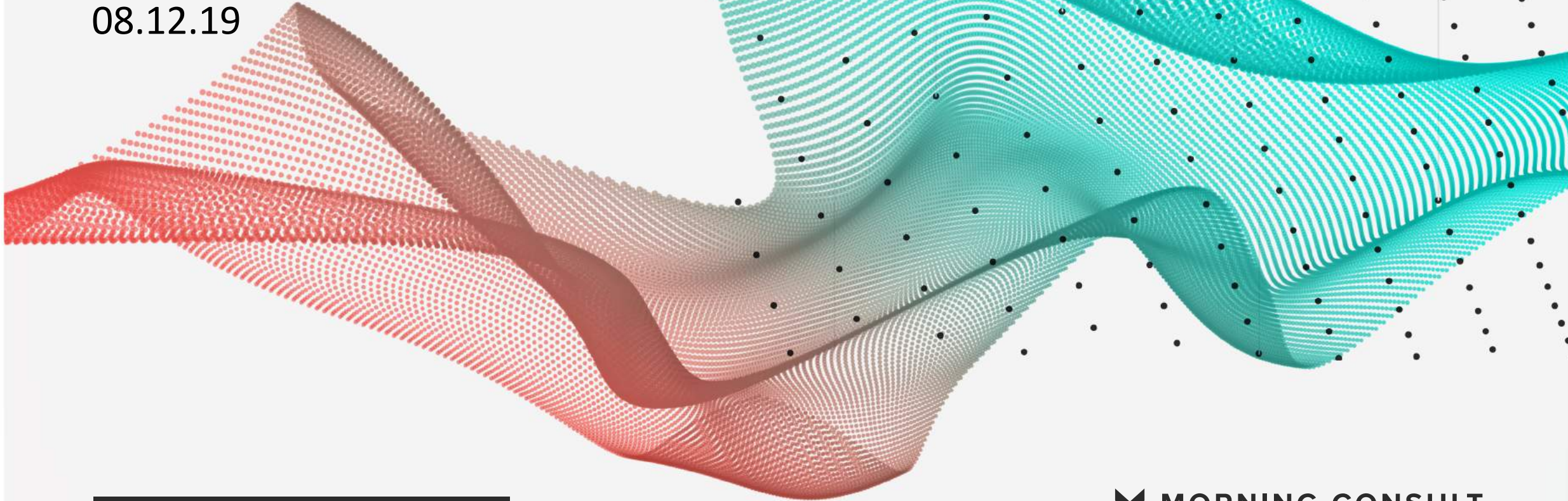


POLITICAL INTELLIGENCE /

08.12.19



2020 PRIMARIES /

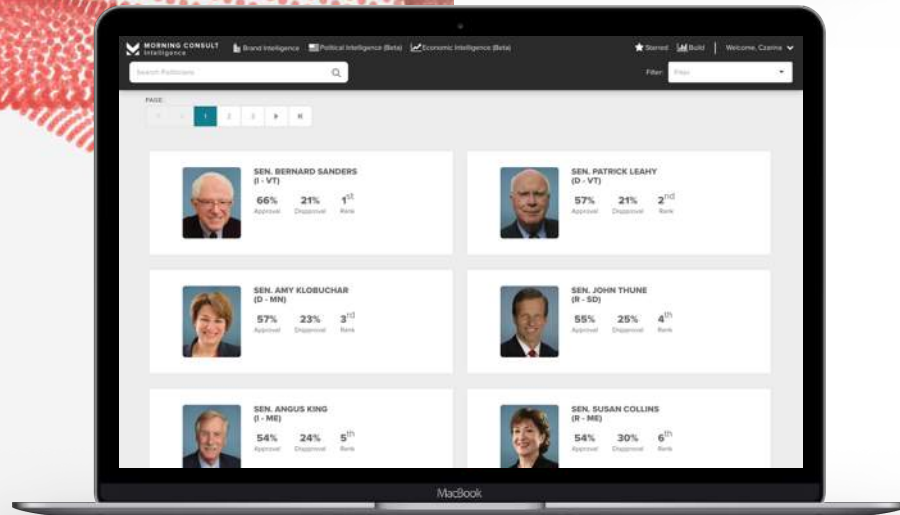
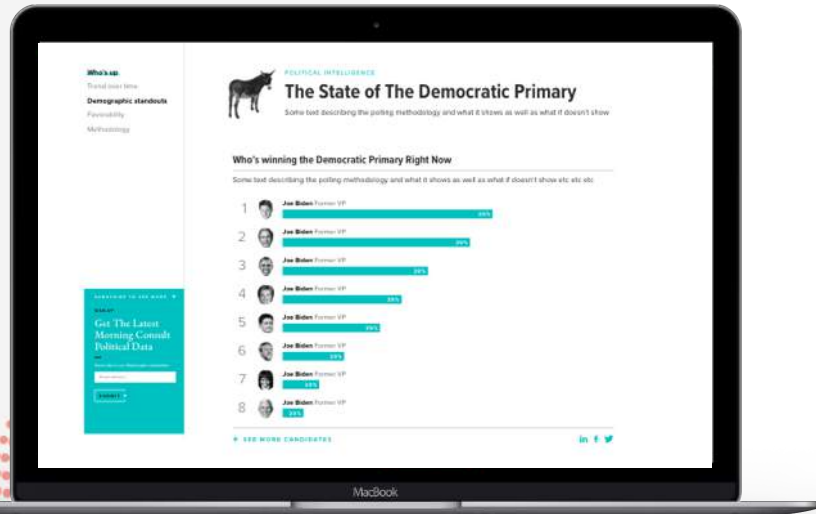
 MORNING CONSULT

ABOUT POLITICAL INTELLIGENCE

Morning Consult is setting a new standard for survey research.

On a daily basis, Morning Consult interviews over 5,000 registered voters across the United States. Along with 2020 presidential election data, Political Intelligence tracks the approval and electability for all governors, senators, House members, the President, and more at the national, state, and congressional district level.

Each week, this report will use that data to deliver key new insights on where voters stand.



KEY TAKEAWAYS / 08.12.2019

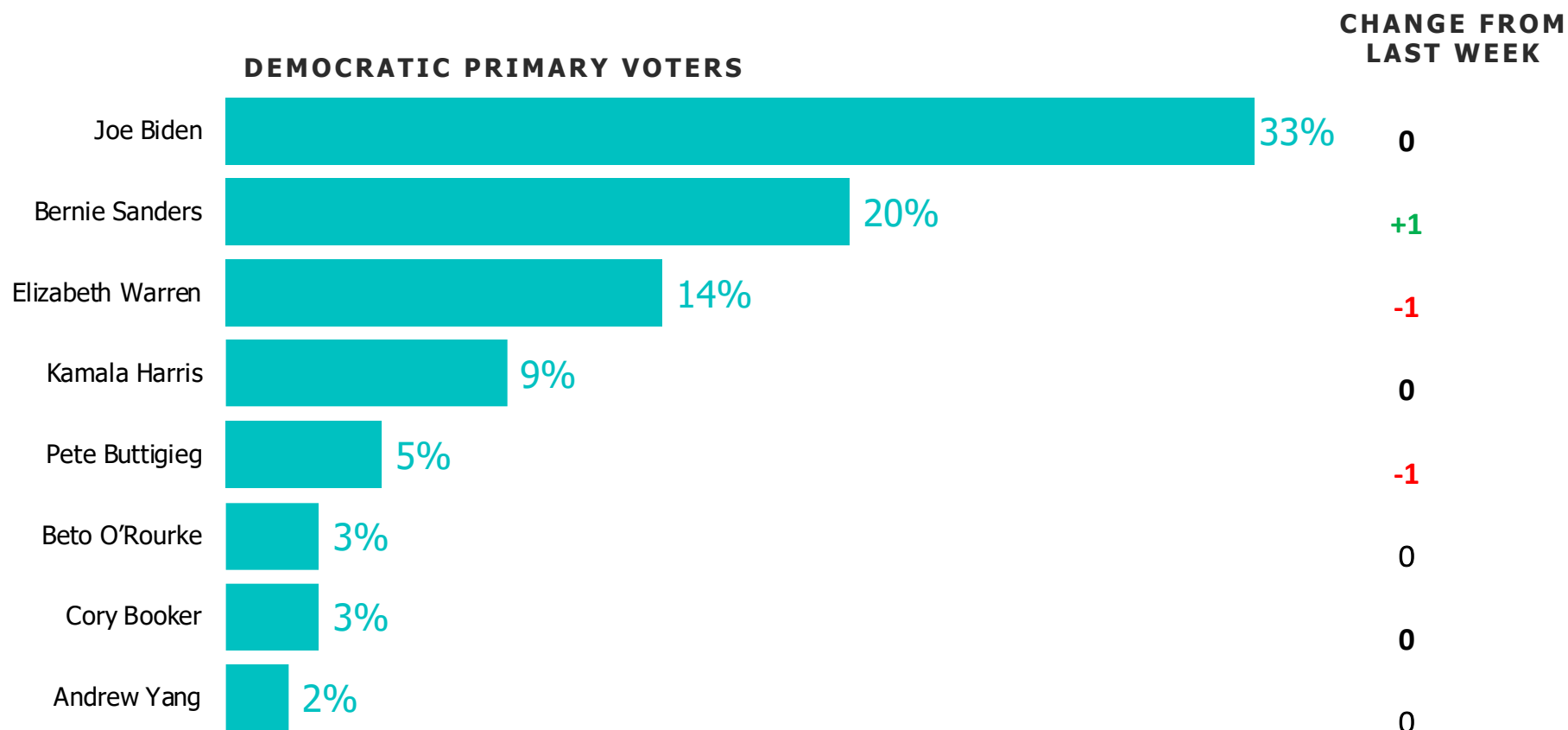
1. **Warren and Harris are slightly underperforming in early primary states:** Both senators have three points less in vote share compared to nationally.
 1. Meanwhile, Steyer holds steady at 6% in the early primary states and is known by just over half (58%) of voters nationally.
2. **The frontrunners are best positioned to pick up support as a second-choice pick.**

Along with polling best in terms of first-choice support, Biden, Sanders, Warren, and Harris are also the most frequent second-choice selections.

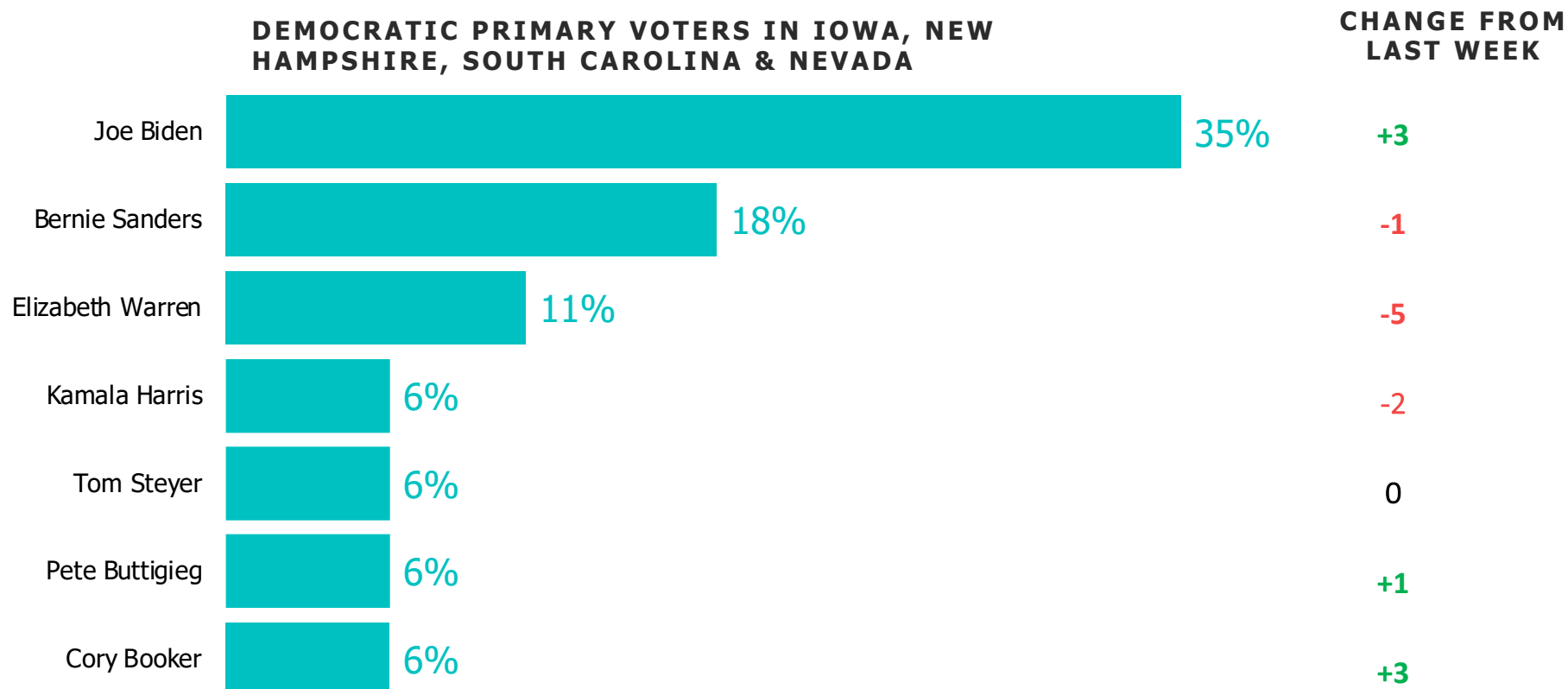


WHO'S LEADING THE DEMOCRATIC PRIMARY

ALL DEMOCRATIC PRIMARY VOTERS

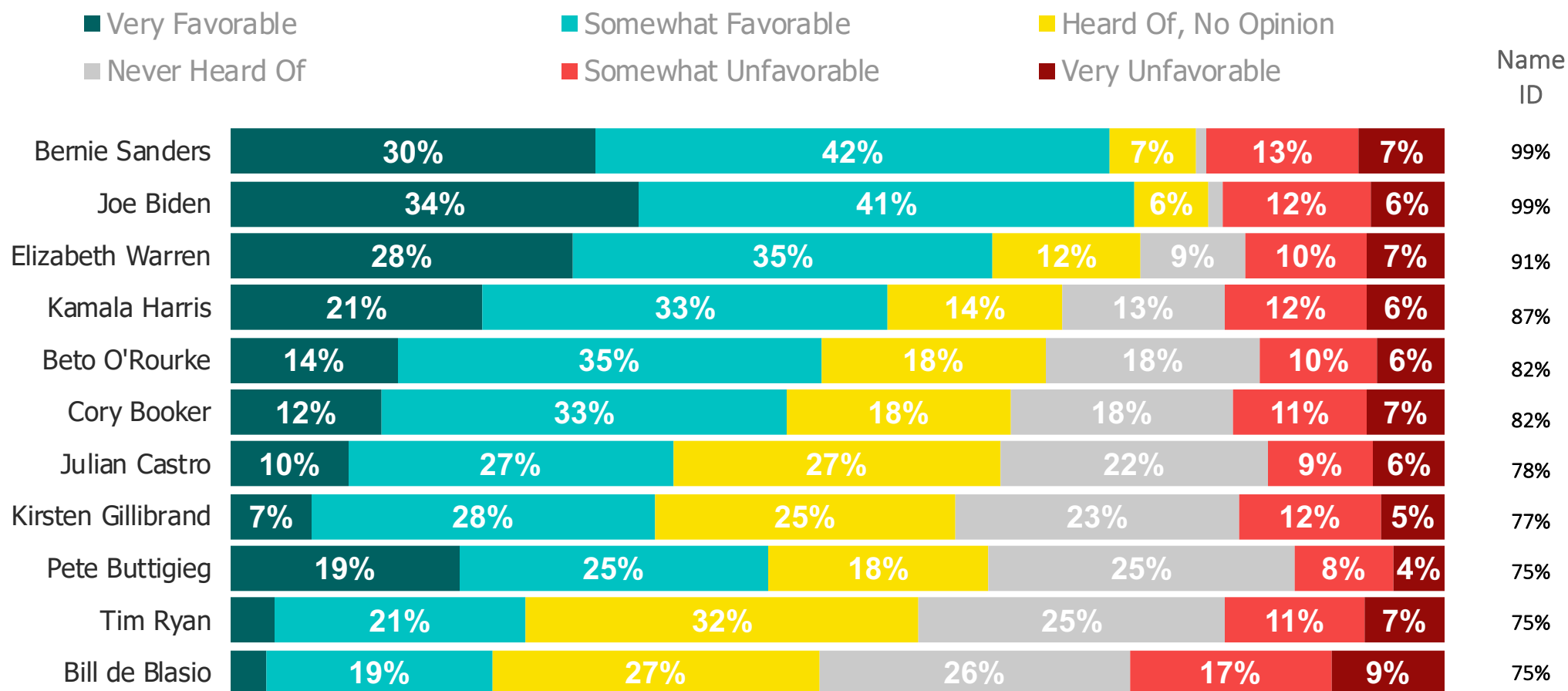


WHO'S LEADING THE DEMOCRATIC PRIMARY / EARLY PRIMARY STATES



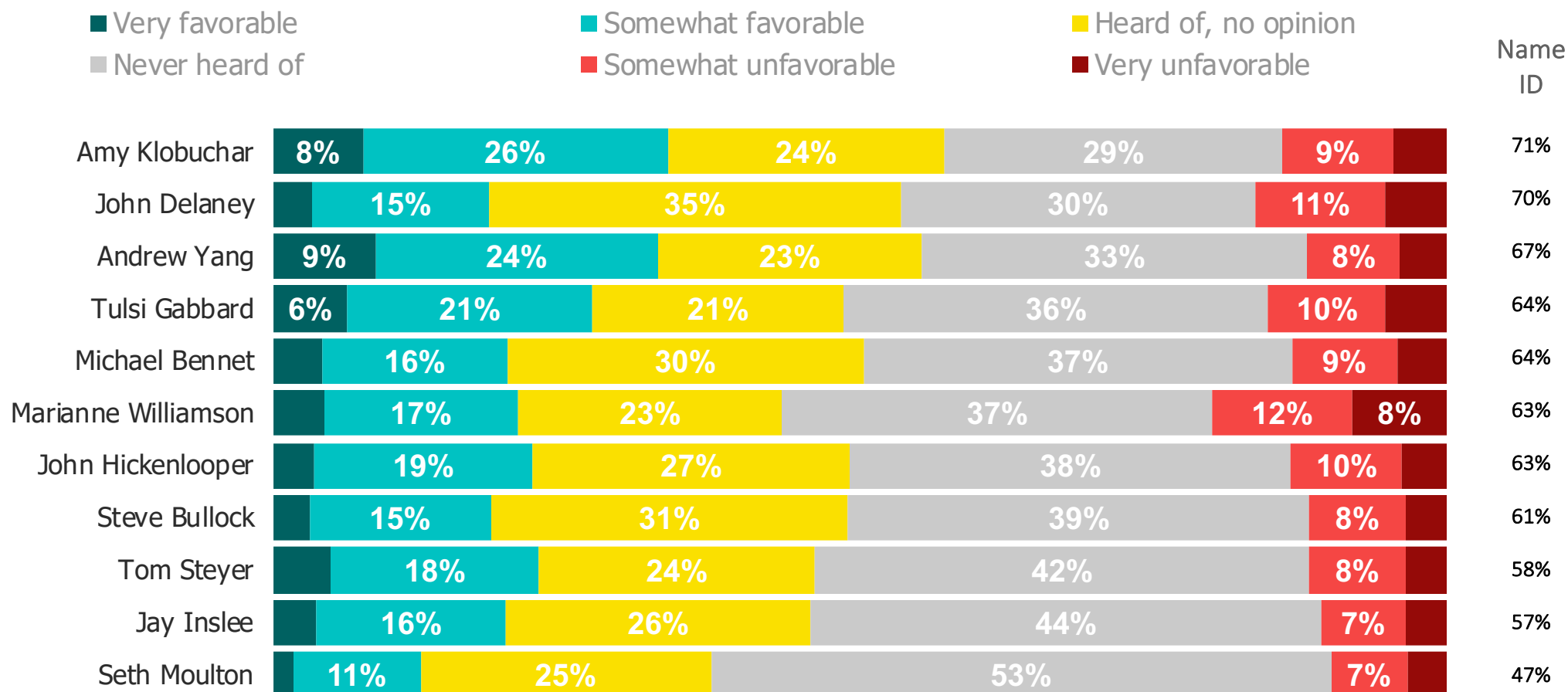
TRACKING FAVORABILITY AND NAME RECOGNITION

Ordered by name ID



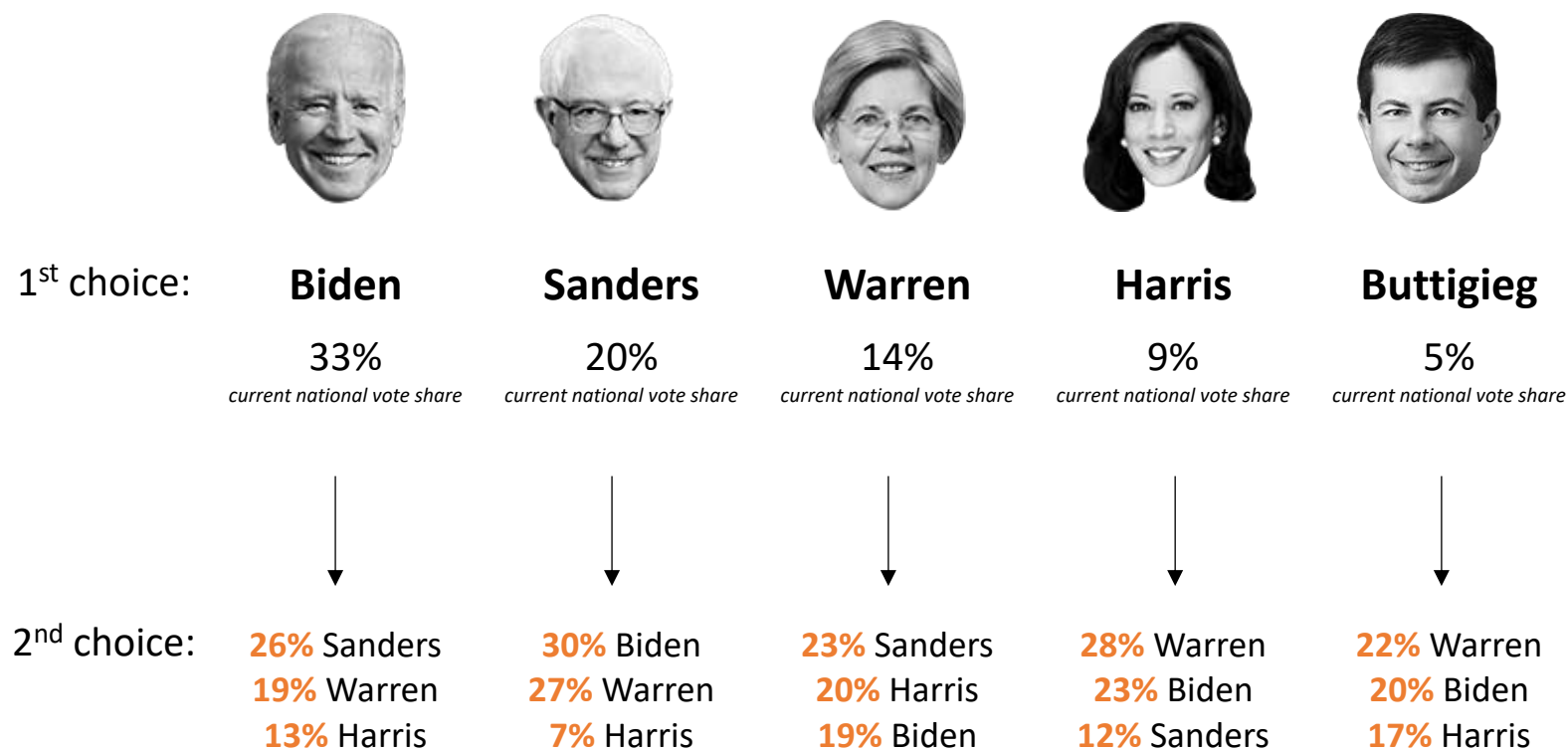
TRACKING FAVORABILITY AND NAME RECOGNITION

Ordered by name ID



SECOND-CHOICE PREFERENCES

Where supporters of each candidate may go next.



**SIGN UP TO RECEIVE THIS
REPORT EARLY EACH WEEK**

[CLICK HERE TO SIGN UP](#)

METHODOLOGY /

This week's report features surveys with registered voters conducted from August 05, 2019 to August 11, 2019. The interviews were conducted online and the data were weighted to approximate a target sample of registered voters based on age, race/ethnicity, gender, educational attainment, and region.

Our Democratic Primary results are reported using 17,117 interviews with registered voters who indicate they may vote in the Democratic primary or caucus. For those who say don't know or no opinion, they are asked to pick a candidate they are learning towards, which are factored into the results. The margin of error for potential Democratic primary voters is +/- 1%.

Which Candidates Have Momentum in Early Primary States?

We have included an 'Early Primary States' demographic throughout this report to showcase who has momentum going into the primary elections. The numbers reflect voters who live in Iowa, New Hampshire, South Carolina, and Nevada.

CONTACT



Business Development
BD@MorningConsult.com



News Media
Press@MorningConsult.com

OFFICES

NEW YORK



SAN FRANCISCO



CHICAGO



WASHINGTON

