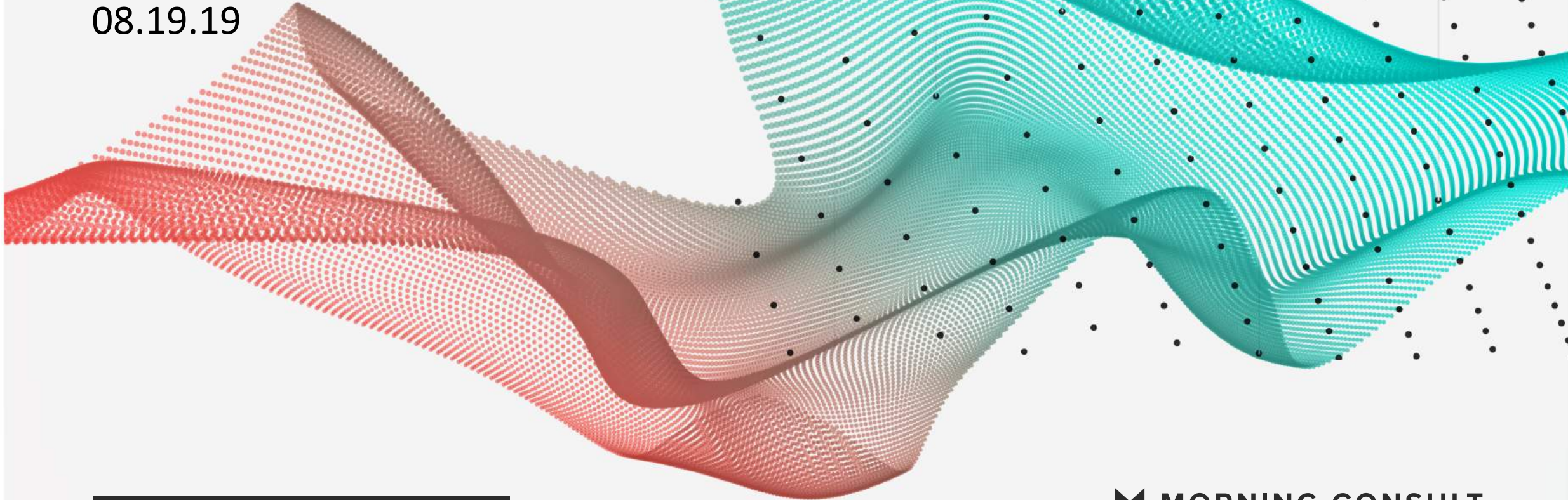


POLITICAL INTELLIGENCE /

08.19.19



2020 PRIMARIES /

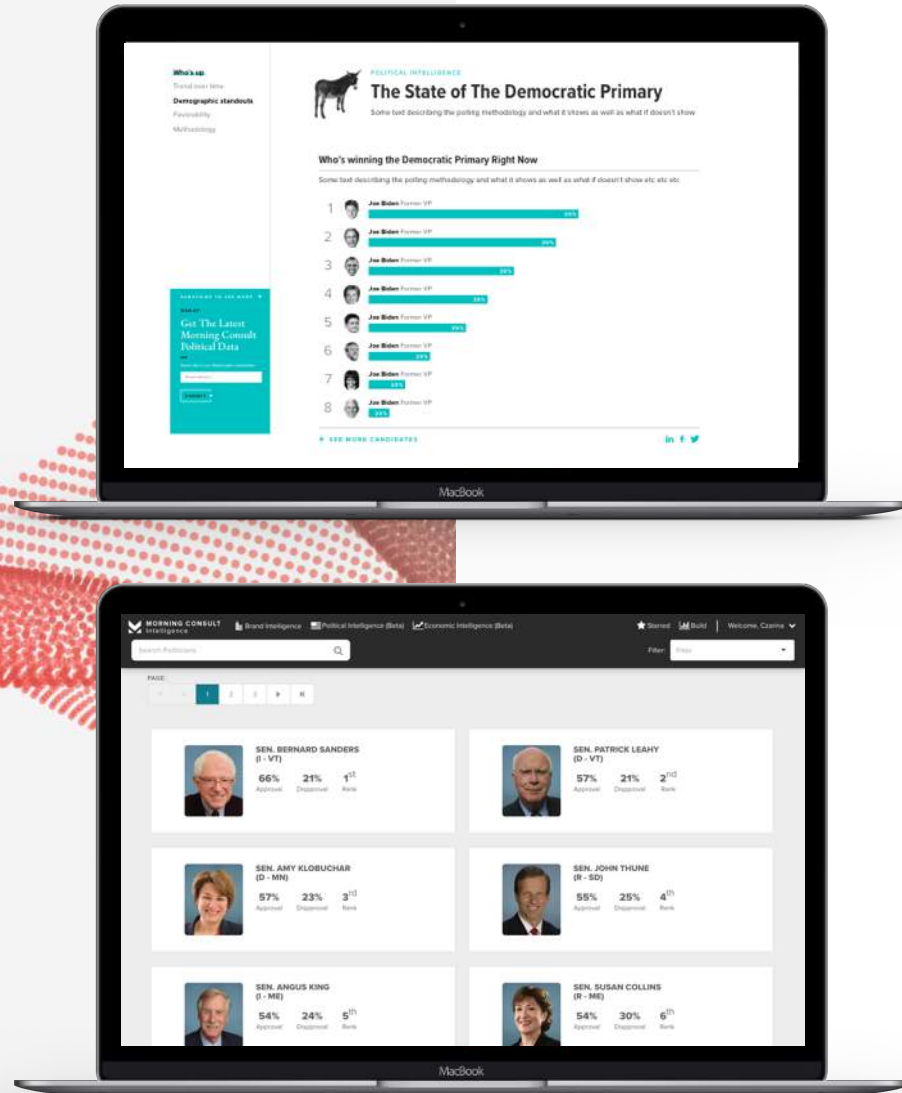
 MORNING CONSULT

ABOUT POLITICAL INTELLIGENCE

Morning Consult is setting a new standard for survey research.

On a daily basis, Morning Consult interviews over 5,000 registered voters across the United States. Along with 2020 presidential election data, Political Intelligence tracks the approval and electability for all governors, senators, House members, the President, and more at the national, state, and congressional district level.

Each week, this report will use that data to deliver key new insights on where voters stand.

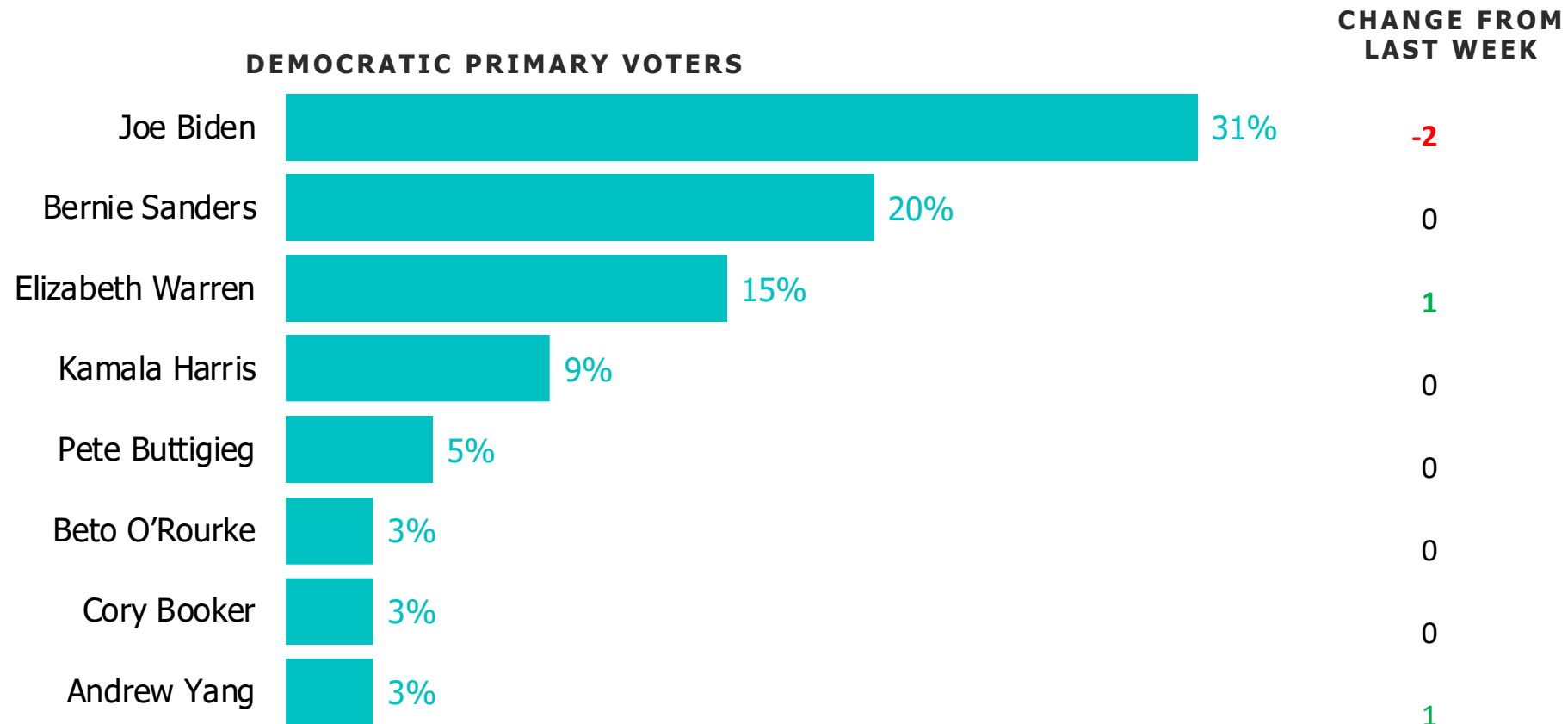


KEY TAKEAWAYS / 08.19.2019

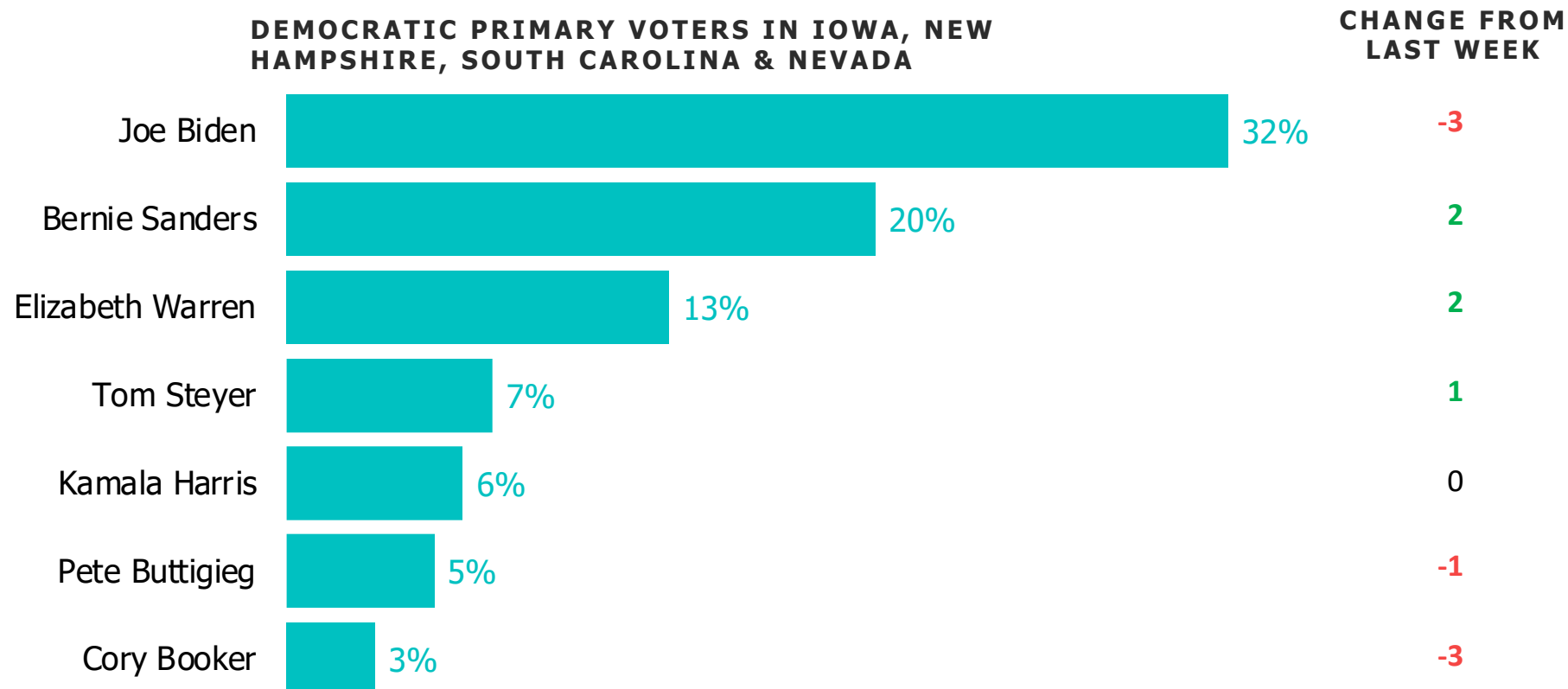
1. **Warren steadily building support with “very liberal” voters:** Since February, Elizabeth Warren has doubled her vote share among potential Democratic primary voters who identify as very liberal. She now stands at 25 percent, tied with Bernie Sanders.
2. **Biden’s favorability waning:** 30 percent of potential Democratic primary voters have a very favorable view of the former VP, the lowest share since Morning Consult began tracking the race in February. His net favorability has dropped 16 points during that time.
3. **O’Rourke sees no movement in the wake of El Paso shooting:** Despite renewed media focus in recent weeks, the former Texas congressman’s numbers remain flat – he has three percent of the national vote share.
4. **Steyer remains strong in early primary states** – Tom Steyer holds a 7 percent vote share in early primary states, and 1 percent nationally.



WHO'S LEADING THE DEMOCRATIC PRIMARY / ALL DEMOCRATIC PRIMARY VOTERS

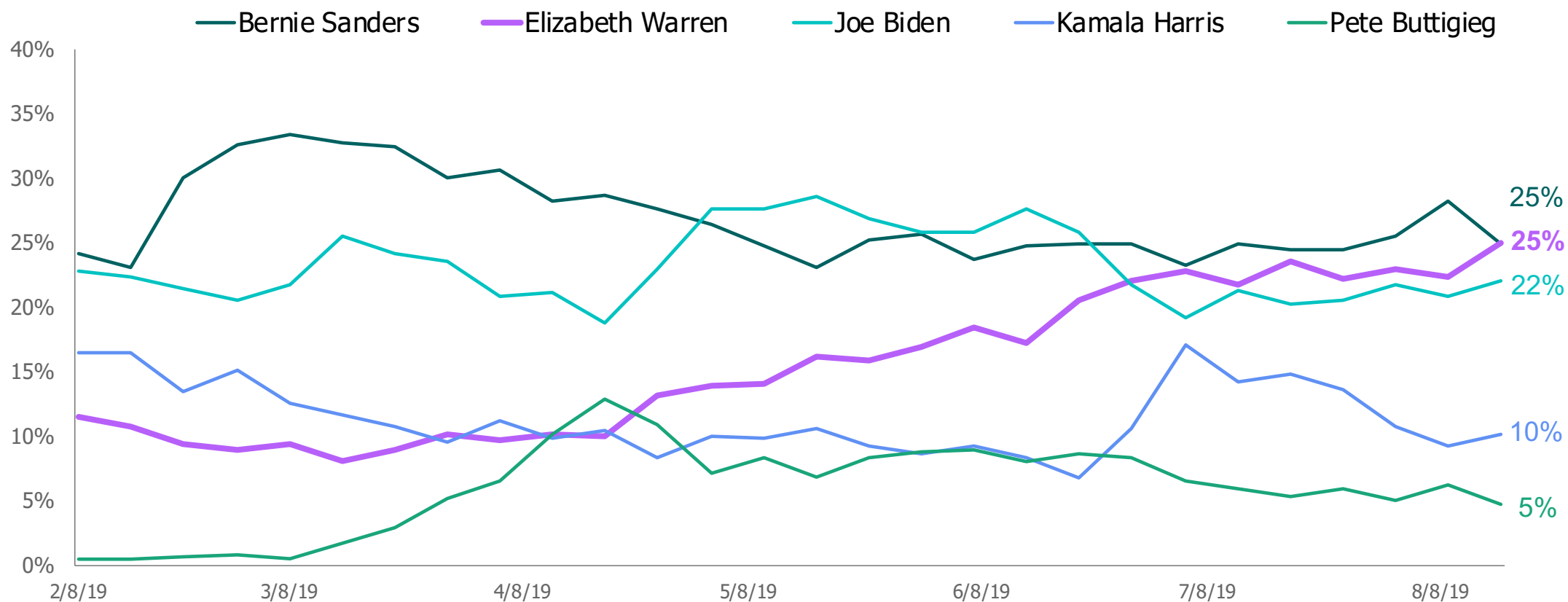


WHO'S LEADING THE DEMOCRATIC PRIMARY / EARLY PRIMARY STATES



WARREN STEADILY BUILDING SUPPORT WITH VERY LIBERAL VOTERS

Since February, Warren has doubled her vote share among Democratic primary voters who identify as very liberal.

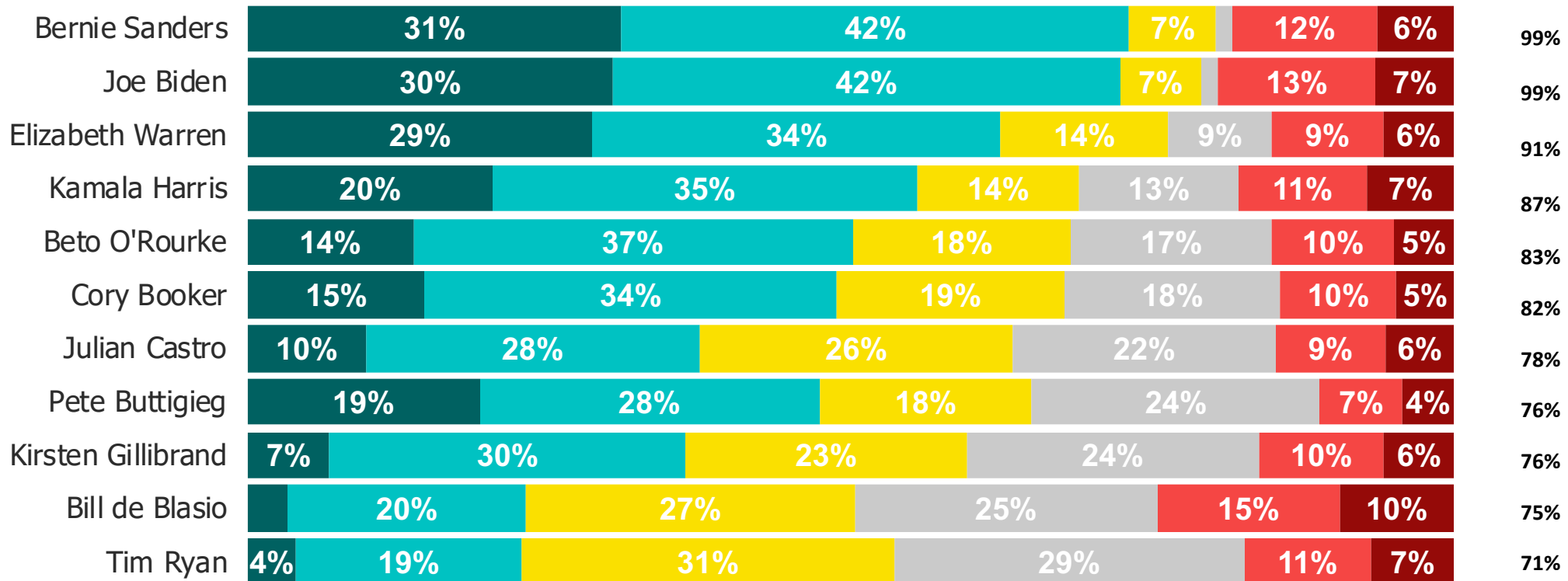


TRACKING FAVORABILITY AND NAME RECOGNITION

Ordered by name ID

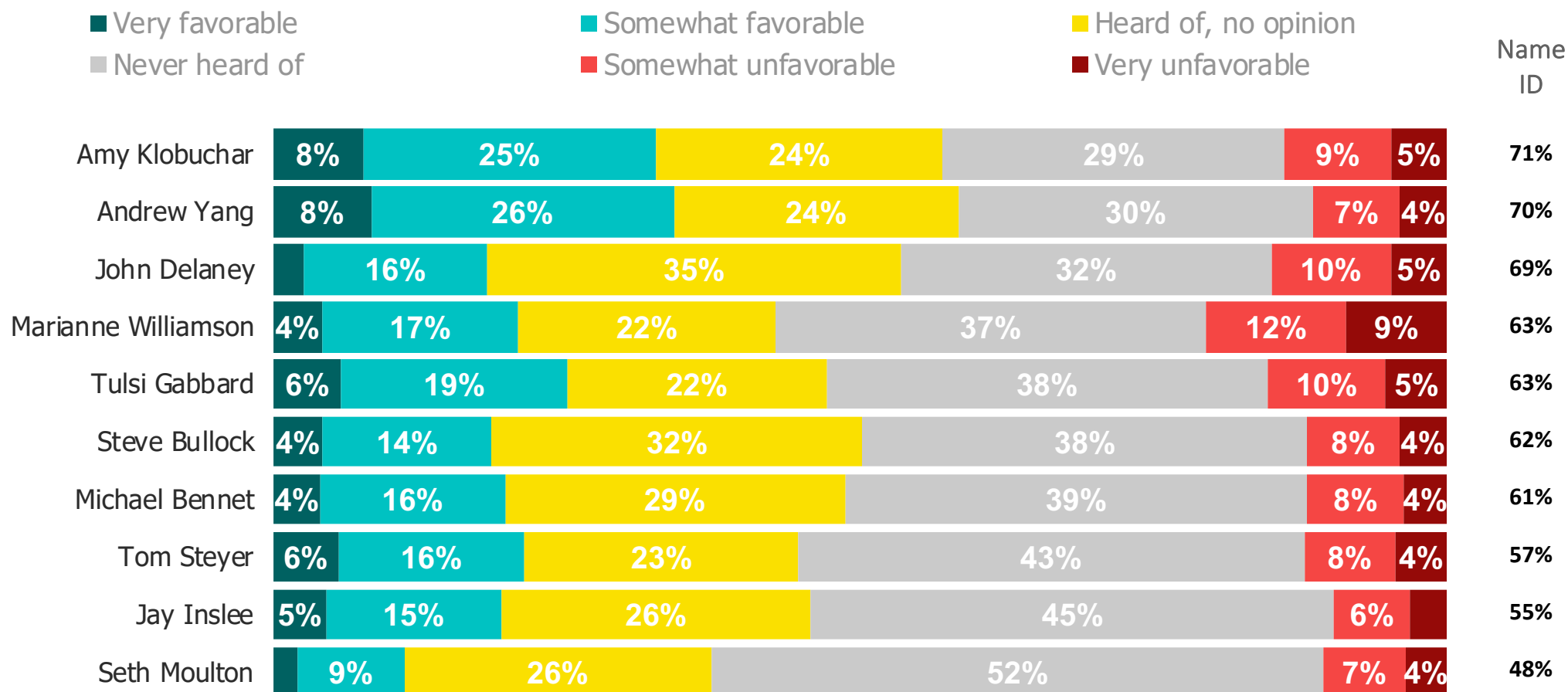
Very Favorable Somewhat Favorable Heard Of, No Opinion Never Heard Of Somewhat Unfavorable Very Unfavorable

Name
ID



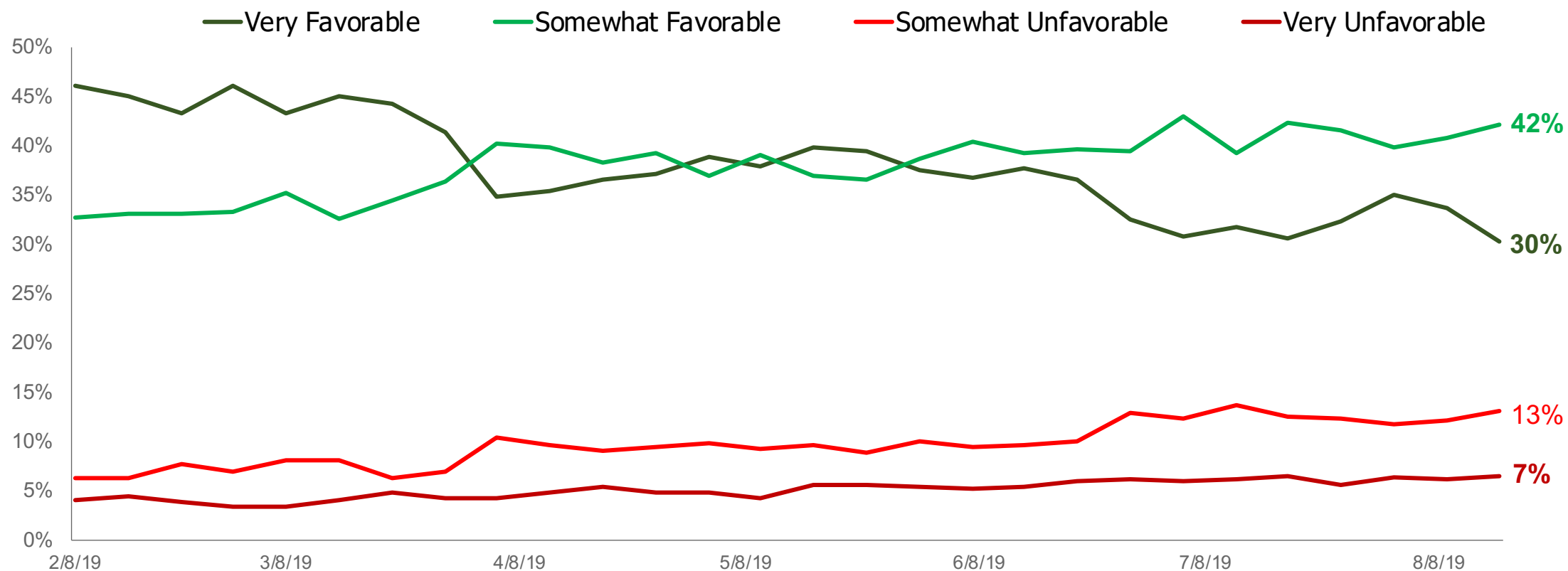
TRACKING FAVORABILITY AND NAME RECOGNITION

Ordered by name ID



BIDEN'S FAVORABILITY WANING

Thirty percent of potential Democratic primary voters have a very favorable view of the former VP, the lowest share since Morning Consult began tracking the race in February. His net favorability has dropped 16 points during that time.



METHODOLOGY /

This week's report features surveys with registered voters conducted from August 12, 2019 to August 18, 2019. The interviews were conducted online and the data were weighted to approximate a target sample of registered voters based on age, race/ethnicity, gender, educational attainment, and region.

Our Democratic Primary results are reported using 17,115 interviews with registered voters who indicate they may vote in the Democratic primary or caucus. For those who say don't know or no opinion, they are asked to pick a candidate they are learning towards, which are factored into the results. The margin of error for potential Democratic primary voters is +/- 1%.

Which Candidates Have Momentum in Early Primary States?

We have included an 'Early Primary States' demographic throughout this report to showcase who has momentum going into the primary elections. The numbers reflect voters who live in Iowa, New Hampshire, South Carolina, and Nevada.

**SIGN UP TO RECEIVE THIS
REPORT EARLY EACH WEEK**

[CLICK HERE TO SIGN UP](#)

CONTACT



Business Development
BD@MorningConsult.com



News Media
Press@MorningConsult.com

OFFICES

NEW YORK



SAN FRANCISCO



CHICAGO



WASHINGTON

