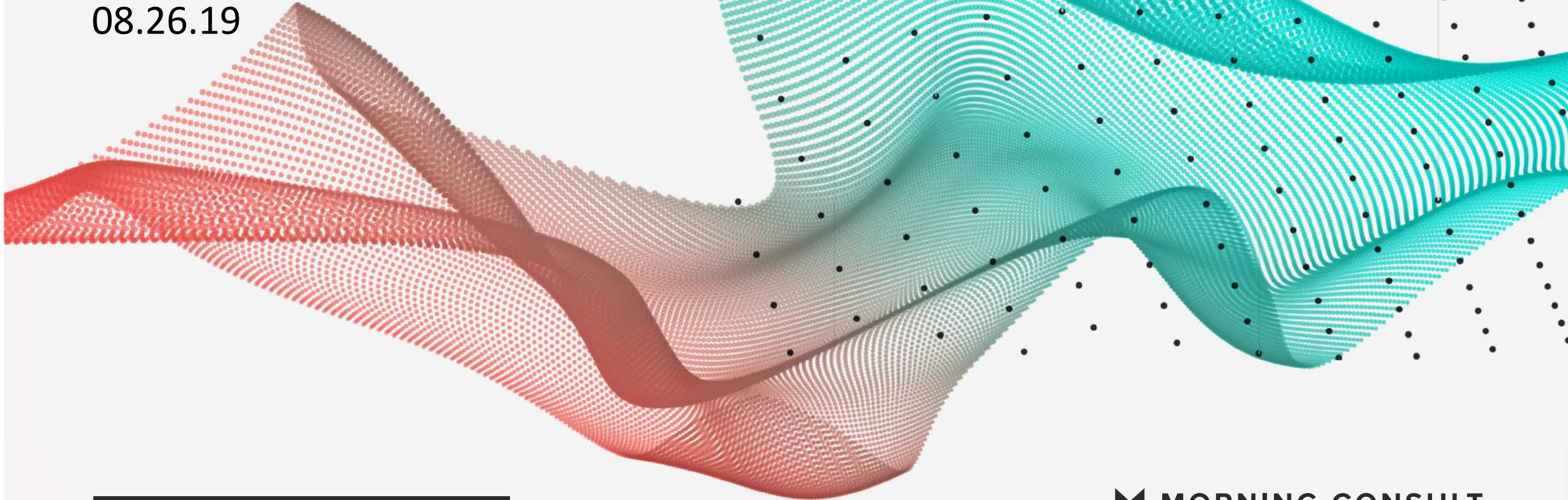


# POLITICAL INTELLIGENCE /

08.26.19



2020 PRIMARIES /

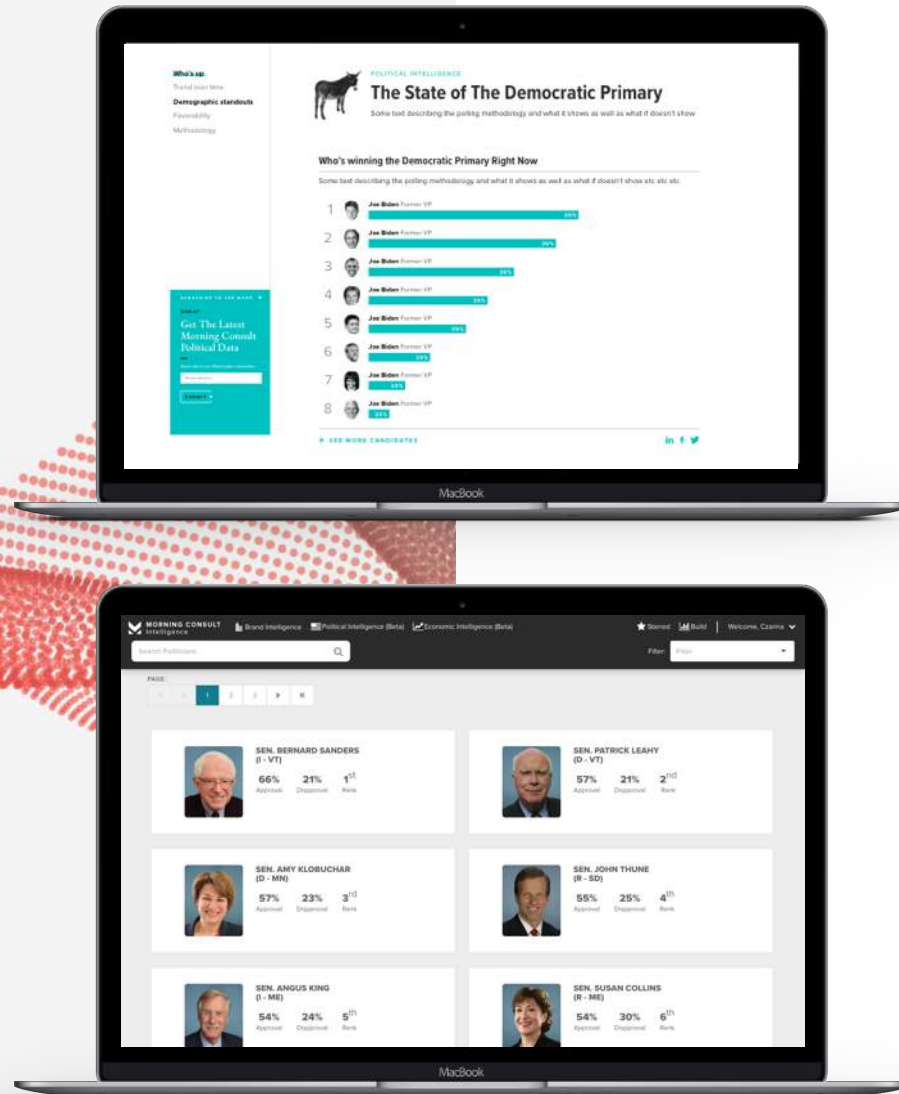
 MORNING CONSULT

# ABOUT POLITICAL INTELLIGENCE

Morning Consult is setting a new standard for survey research.

On a daily basis, Morning Consult interviews over 5,000 registered voters across the United States. Along with 2020 presidential election data, Political Intelligence tracks the approval and electability for all governors, senators, House members, the President, and more at the national, state, and congressional district level.

Each week, this report will use that data to deliver key new insights on where voters stand.

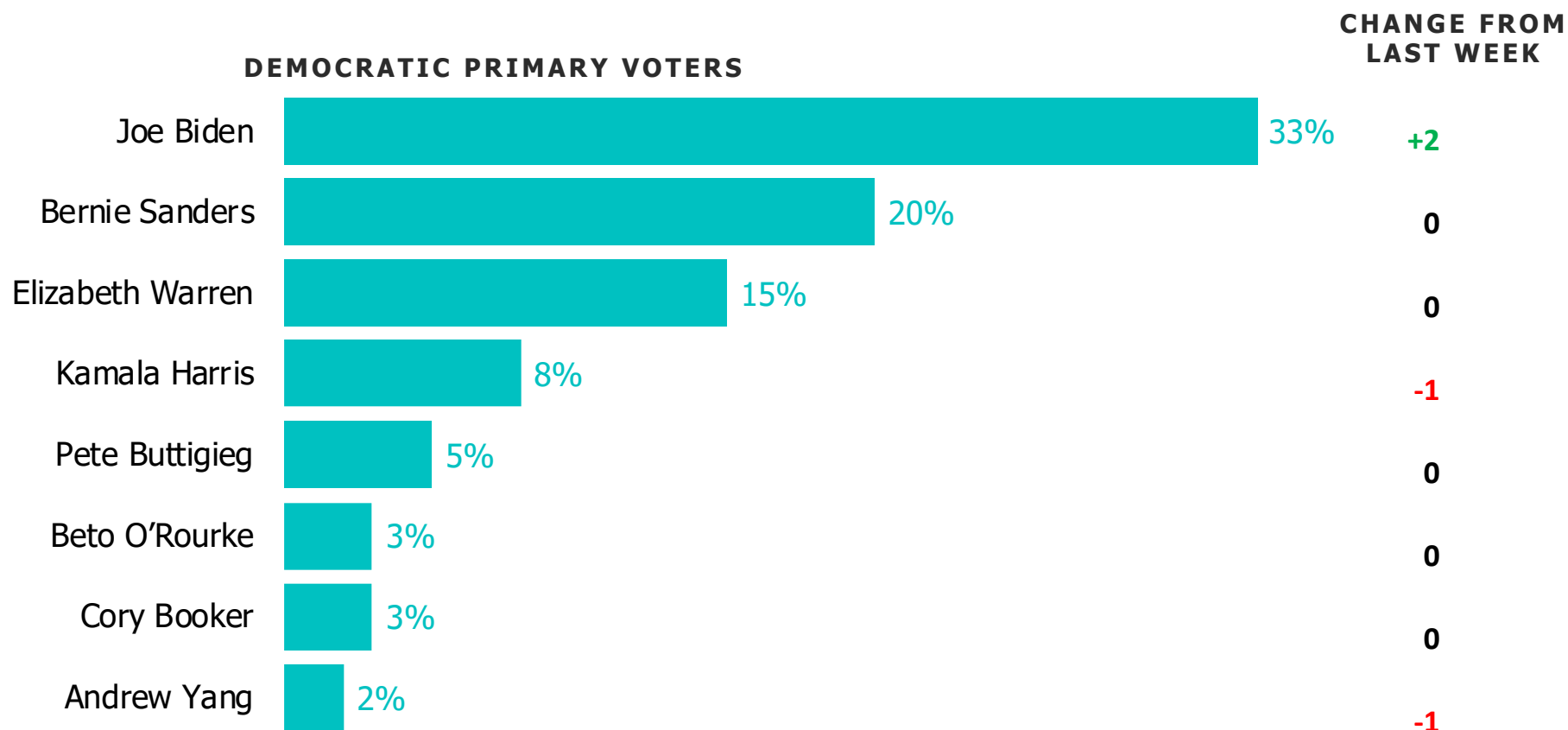


# KEY TAKEAWAYS / 08.26.2019

1. **Biden's lead holds steady with Sanders and Warren trailing by double digits.** The state of the race has remained unchanged in recent weeks – even as candidates begin to drop out.
2. **The early primary state competition continues to heat up.** As primaries and caucuses grow nearer, more candidates are gaining traction. There are eight candidates with at least 4 percent of the vote – compared to five candidates nationally.

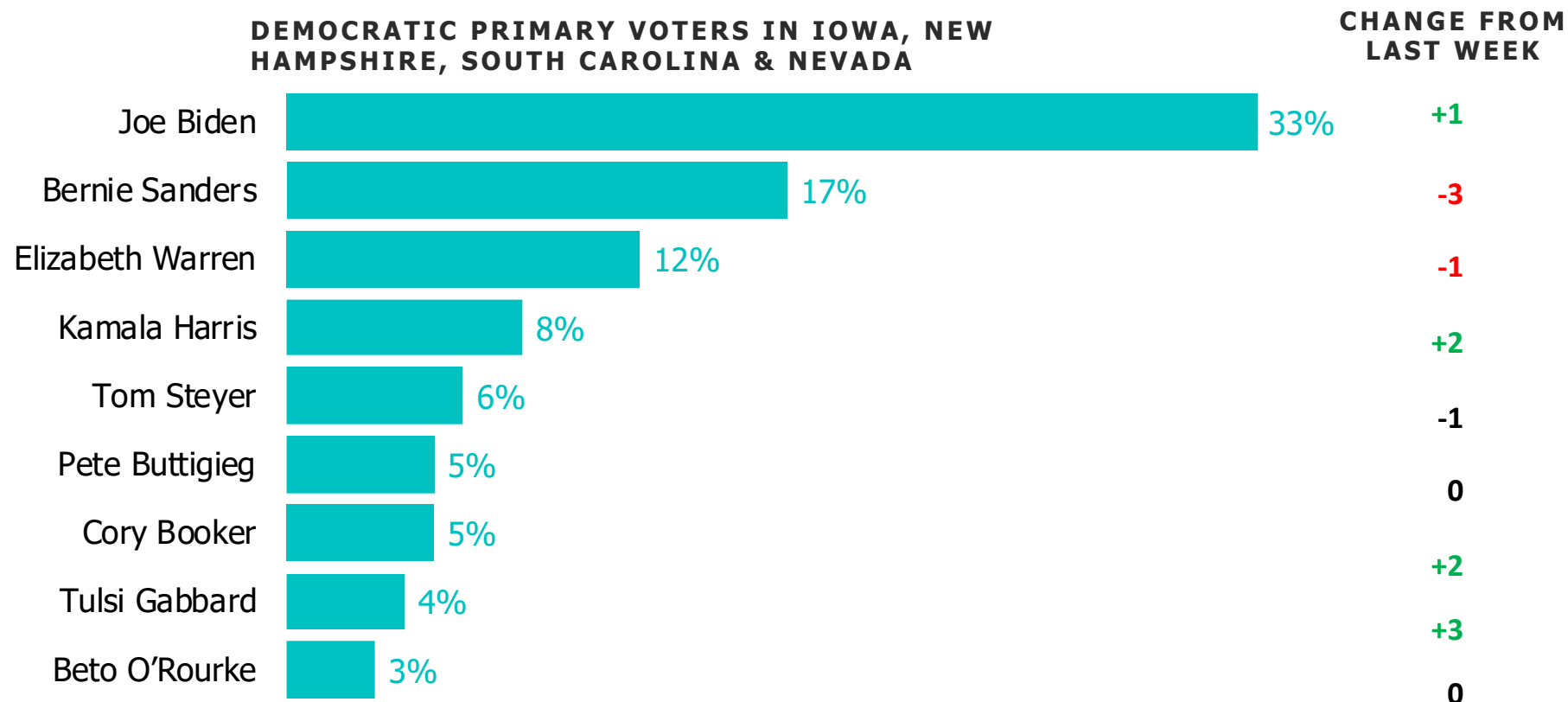


# WHO'S LEADING THE DEMOCRATIC PRIMARY / ALL DEMOCRATIC PRIMARY VOTERS



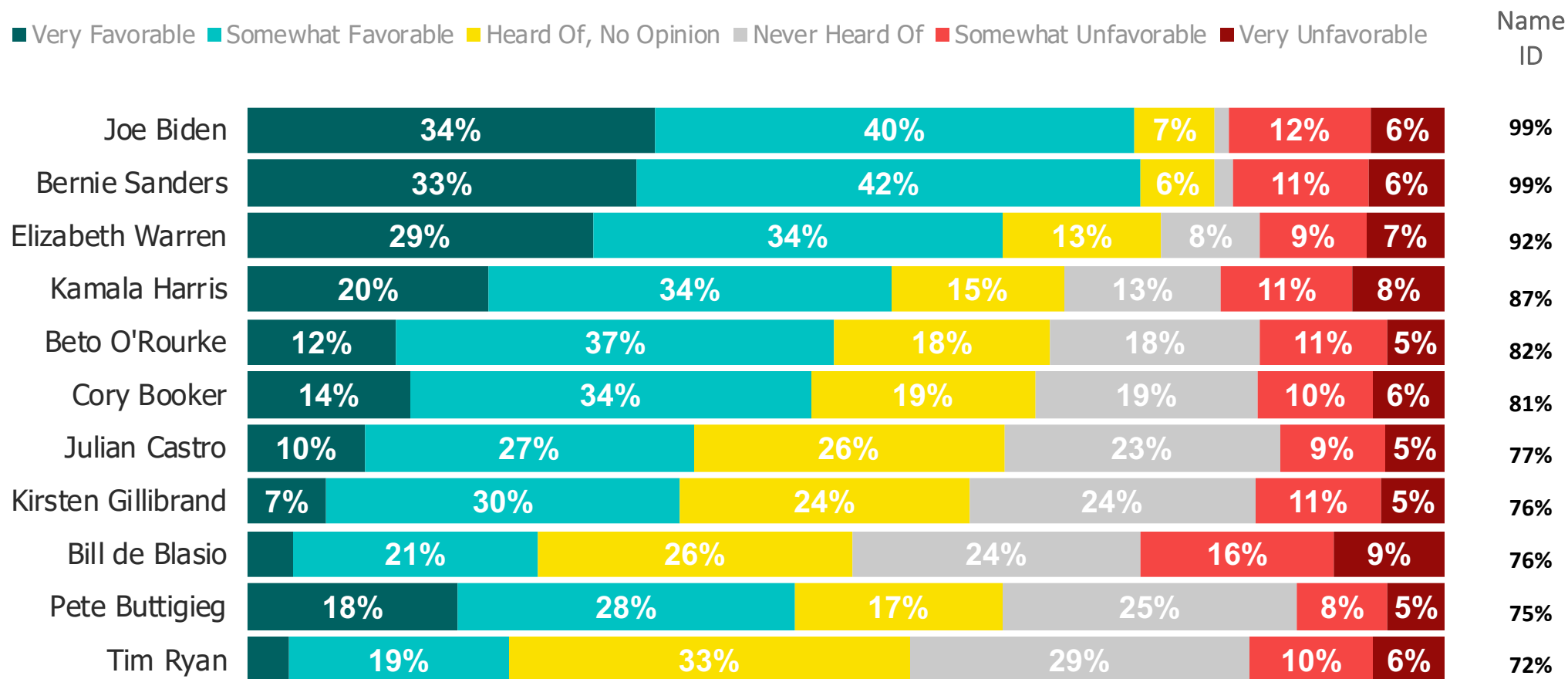


# WHO'S LEADING THE DEMOCRATIC PRIMARY / EARLY PRIMARY STATES



# TRACKING FAVORABILITY AND NAME RECOGNITION

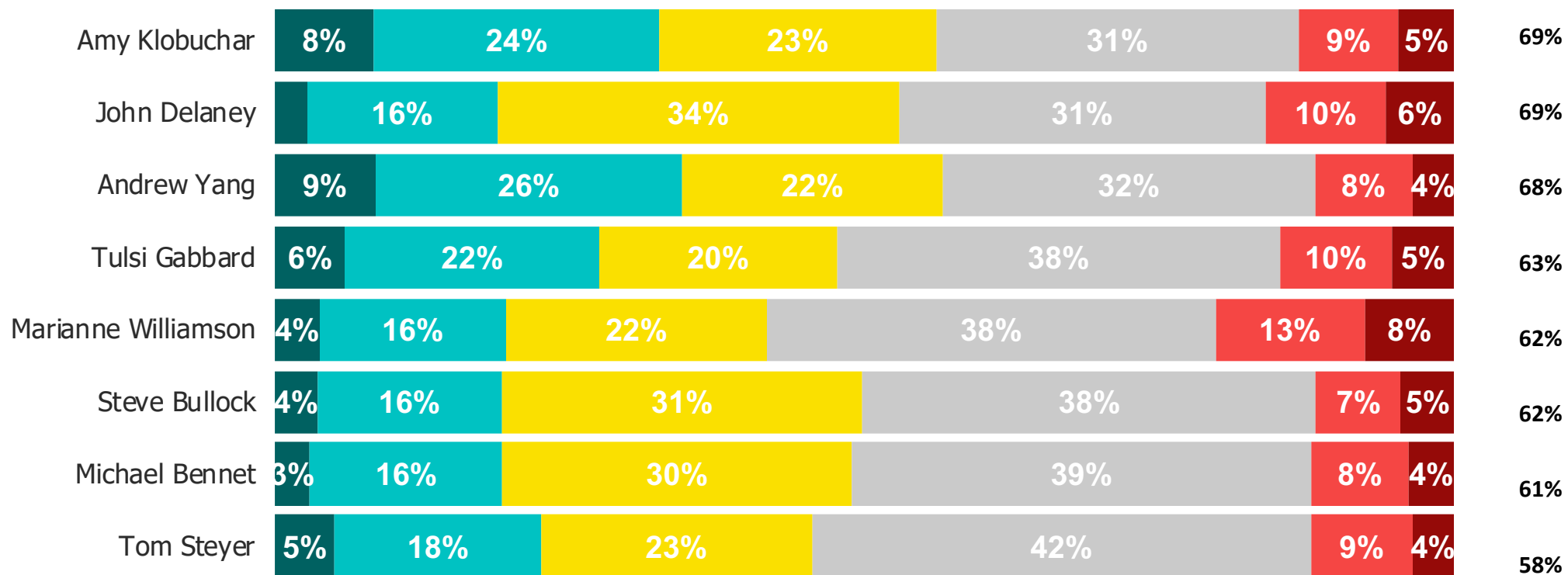
Ordered by name ID



# TRACKING FAVORABILITY AND NAME RECOGNITION

Ordered by name ID

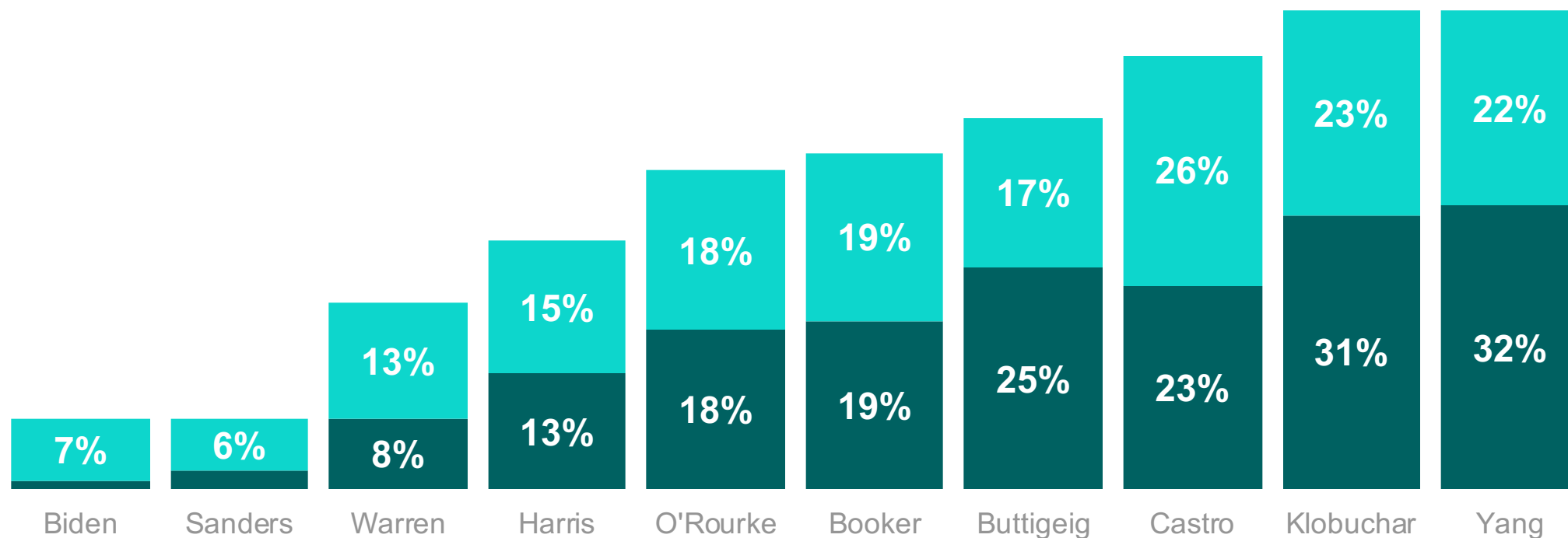
Very favorable
Somewhat favorable
Heard of, no opinion
Never heard of
Somewhat unfavorable
Very unfavorable
Name ID



# KLOBUCHAR AND YANG ARE THE LEAST WELL-KNOWN CANDIDATES WHO HAVE QUALIFIED FOR THE NEXT DEBATE

Showing percent of voters who have no opinion on or have never heard of candidates in September Debates

■ *Never Heard Of* ■ *No Opinion*





# METHODOLOGY /

This week's report features surveys with registered voters conducted from August 19, 2019 to August 25, 2019. The interviews were conducted online and the data were weighted to approximate a target sample of registered voters based on age, race/ethnicity, gender, educational attainment, and region.

Our Democratic Primary results are reported using 17,303 interviews with registered voters who indicate they may vote in the Democratic primary or caucus. For those who say don't know or no opinion, they are asked to pick a candidate they are learning towards, which are factored into the results. The margin of error for potential Democratic primary voters is +/- 1%.

## *Which Candidates Have Momentum in Early Primary States?*

We have included an 'Early Primary States' demographic throughout this report to showcase who has momentum going into the primary elections. The numbers reflect voters who live in Iowa, New Hampshire, South Carolina, and Nevada.

**SIGN UP TO RECEIVE THIS  
REPORT EARLY EACH WEEK**

**[CLICK HERE TO SIGN UP](#)**



## CONTACT

---



**Business Development**  
BD@MorningConsult.com



**News Media**  
Press@MorningConsult.com

## OFFICES

---

### NEW YORK



### SAN FRANCISCO



### CHICAGO



### WASHINGTON

