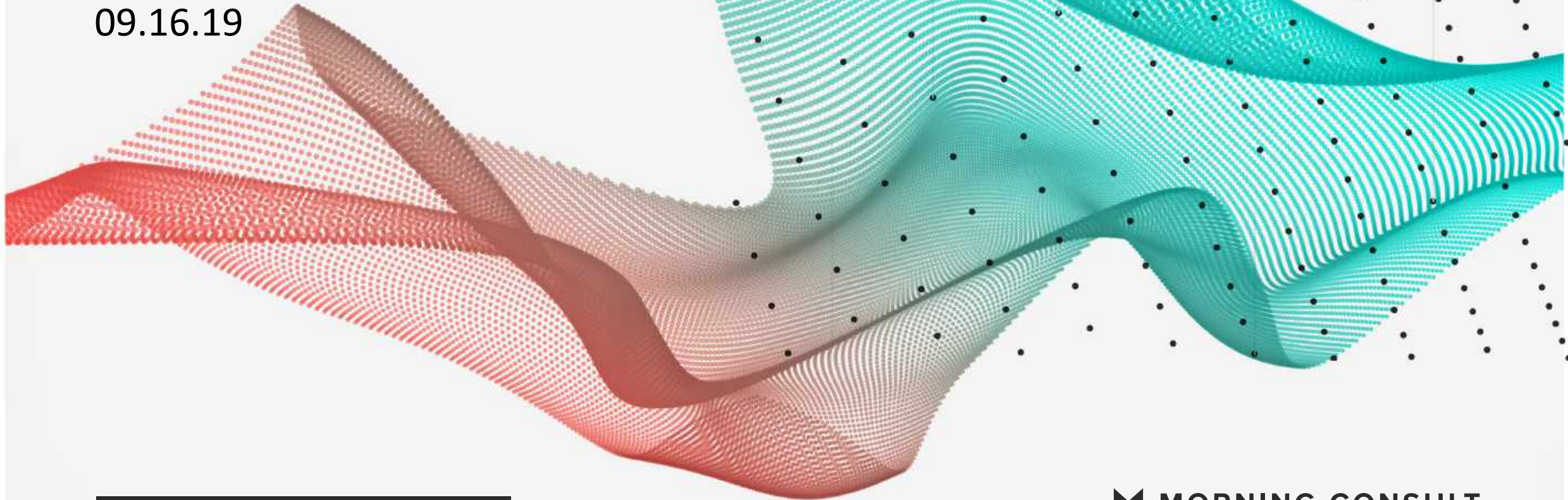


POLITICAL INTELLIGENCE /

09.16.19



2020 PRIMARIES /

 MORNING CONSULT

ABOUT POLITICAL INTELLIGENCE

Morning Consult is setting a new standard for survey research.

On a daily basis, Morning Consult interviews over 5,000 registered voters across the United States. Along with 2020 presidential election data, Political Intelligence tracks the approval and electability for all governors, senators, House members, the President, and more at the national, state, and congressional district level.

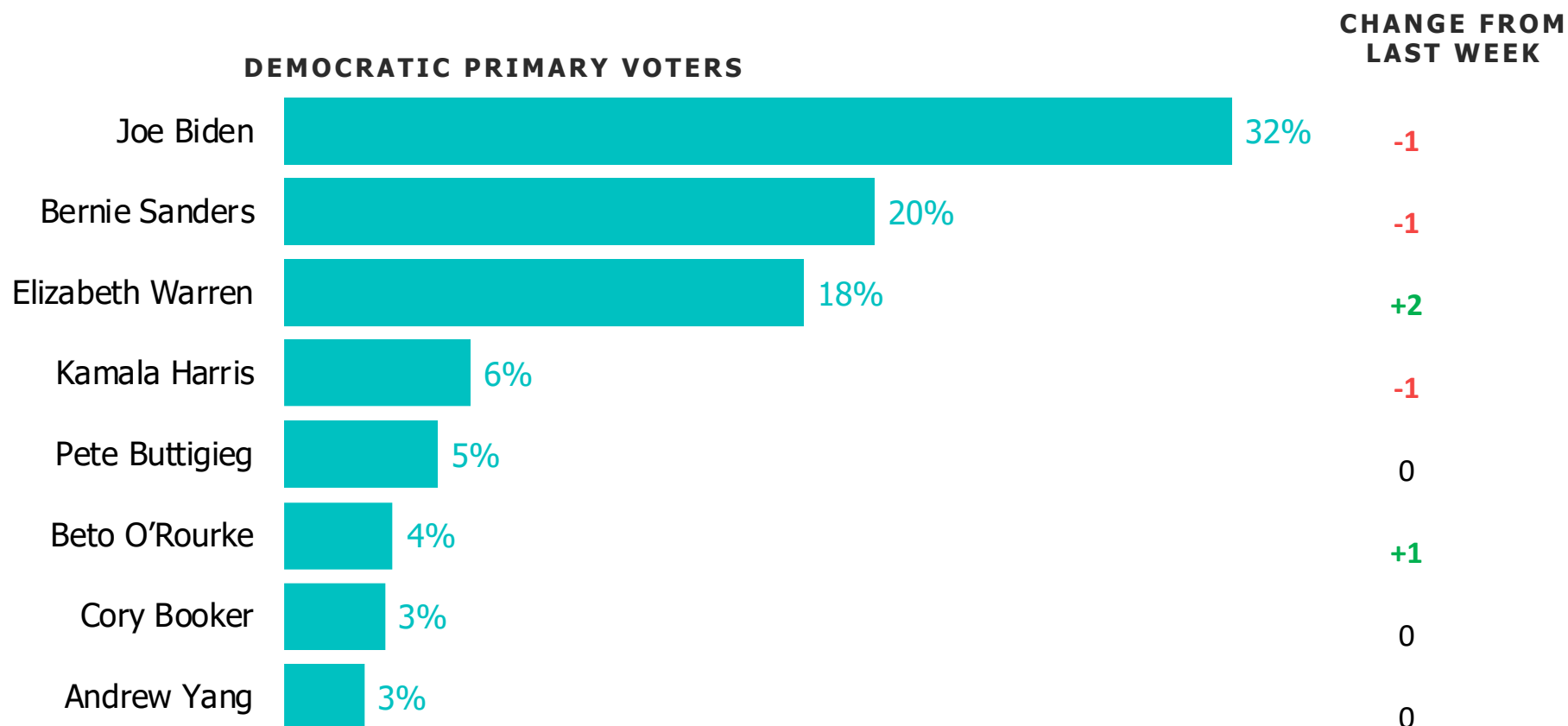
Each week, this report will use that data to deliver key new insights on where voters stand.

KEY TAKEAWAYS / 09.16.2019

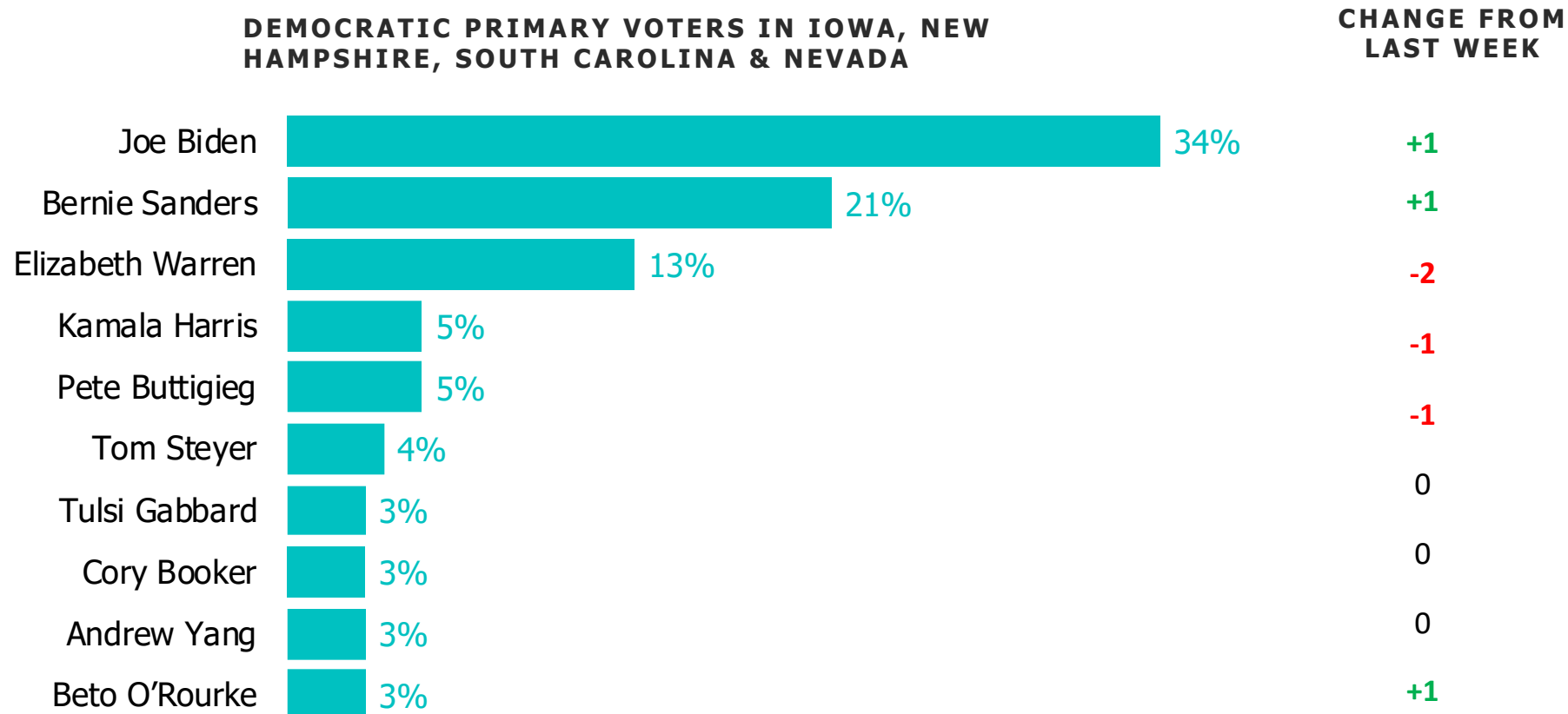
1. **Warren picks up 2 points following the debate.** No other candidate moved more than one point in support, the margin of error for the survey.
 1. With 18 percent of the first-place vote share, Warren is now in her best position of the campaign.
2. **Among voters who are most interested in politics, Sanders drops slightly:** The Vermont senator fell 3 points to 15 percent of the vote share with this group. No other candidate shifted more than 2 points after the debate, the margin of error for this demographic.
3. **Julian Castro takes a hit in favorability.** During the debate, Castro drew attention by attacking Joe Biden. Voters appear to have been turned off by the move – Castro's net favorability dropped by 11 points.



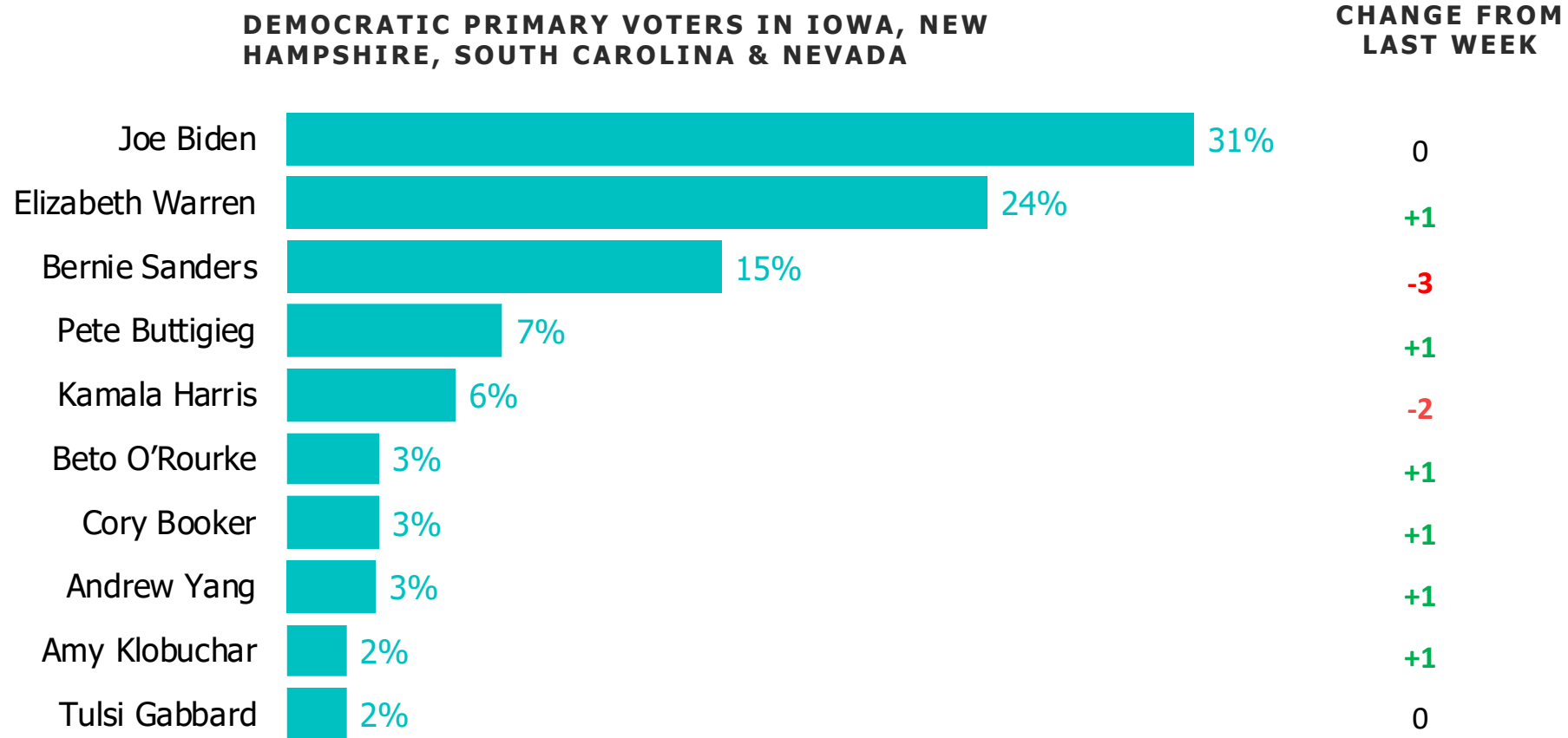
WHO'S LEADING THE DEMOCRATIC PRIMARY / ALL DEMOCRATIC PRIMARY VOTERS



WHO'S LEADING THE DEMOCRATIC PRIMARY / EARLY PRIMARY STATES

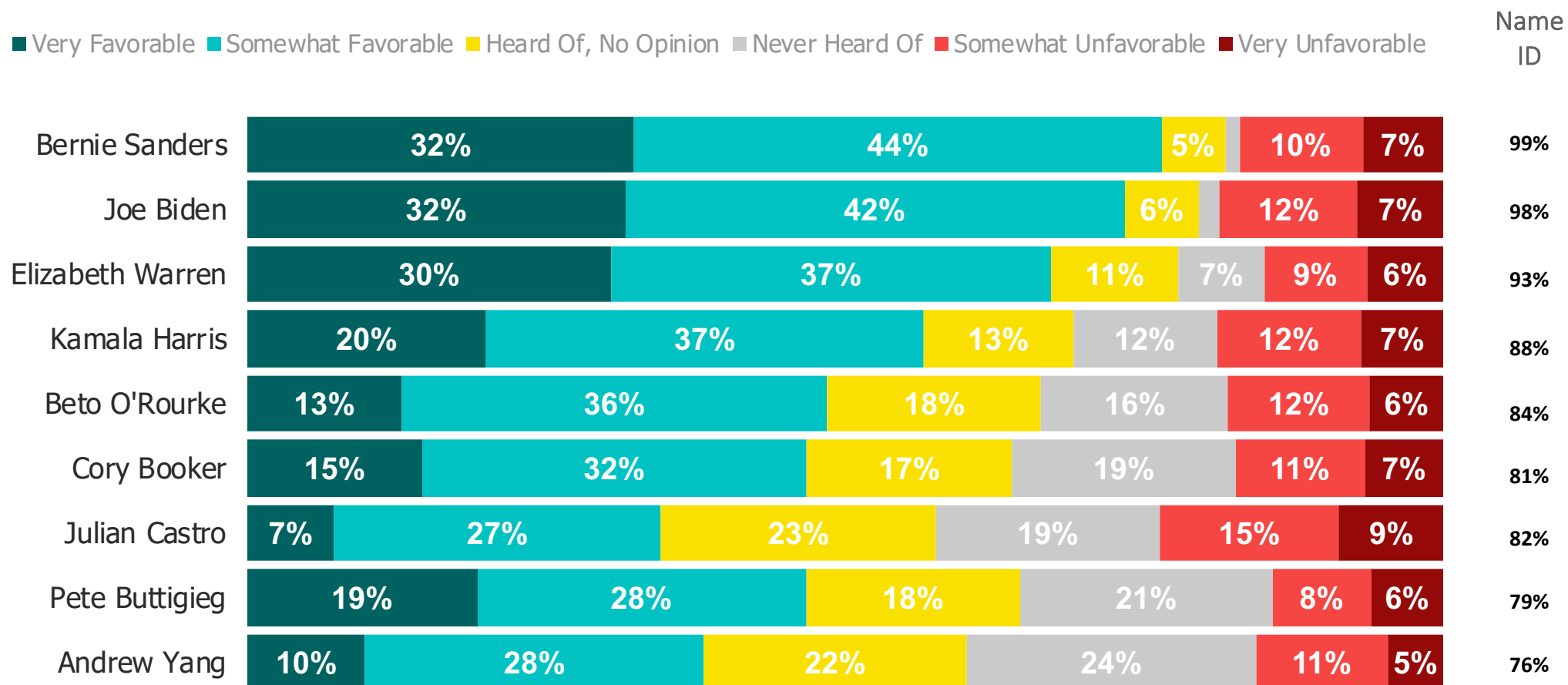


WHO'S LEADING THE DEMOCRATIC PRIMARY / EXTREMELY INTERESTED IN POLITICS



TRACKING FAVORABILITY AND NAME RECOGNITION

Ordered by name ID



TRACKING FAVORABILITY AND NAME RECOGNITION

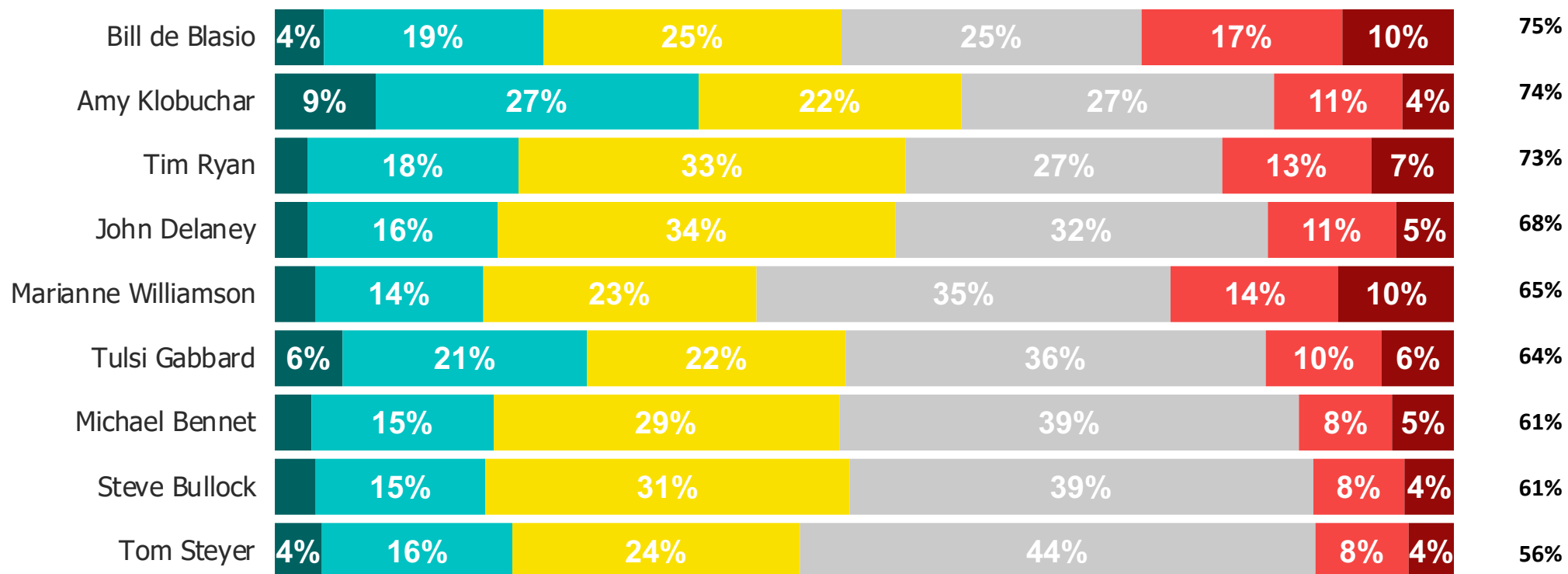
Ordered by name ID

Very favorable
Never heard of

Somewhat favorable
Somewhat unfavorable

Heard of, no opinion
Very unfavorable

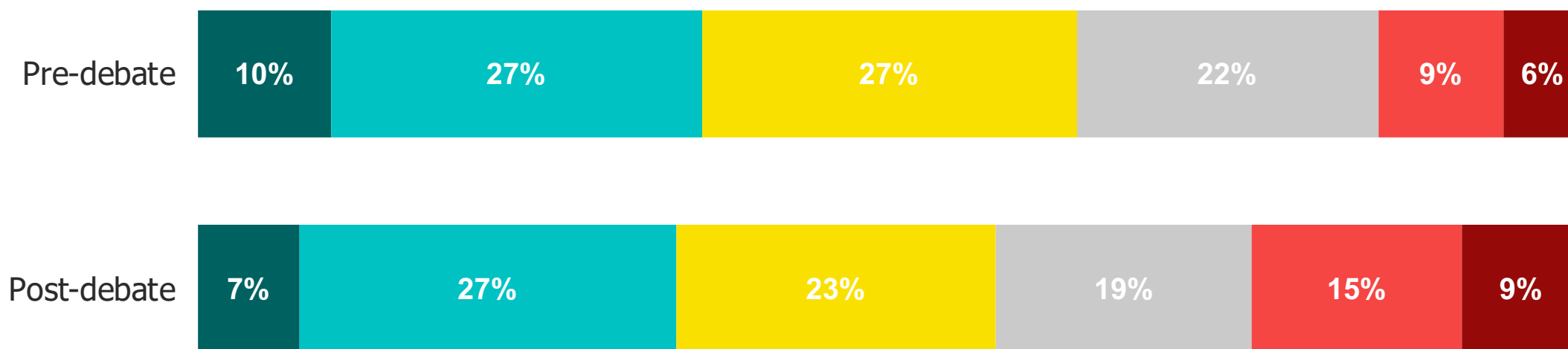
Name
ID



JULIAN CASTRO'S FAVORABILITY DROPS

Castro's net favorability dropped by 11 points since last week's survey

■ Very favorable ■ Somewhat favorable ■ Heard of, no opinion ■ Never heard of ■ Somewhat unfavorable ■ Very unfavorable



METHODOLOGY /

This week's report features surveys with registered voters conducted from September 13, 2019 to September 15, 2019. The interviews were conducted online and the data were weighted to approximate a target sample of registered voters based on age, race/ethnicity, gender, educational attainment, and region.

Our Democratic Primary results are reported using 7,487 interviews with registered voters who indicate they may vote in the Democratic primary or caucus. For those who say don't know or no opinion, they are asked to pick a candidate they are learning towards, which are factored into the results. The margin of error for potential Democratic primary voters is +/- 1%.

Which Candidates Have Momentum in Early Primary States?

We have included an 'Early Primary States' demographic throughout this report to showcase who has momentum going into the primary elections. The numbers reflect voters who live in Iowa, New Hampshire, South Carolina, and Nevada.



**SIGN UP TO RECEIVE THIS
REPORT EARLY EACH WEEK**

CLICK HERE TO SIGN UP



CONTACT



Business Development
BD@MorningConsult.com



News Media
Press@MorningConsult.com

OFFICES

NEW YORK



SAN FRANCISCO



CHICAGO



WASHINGTON

