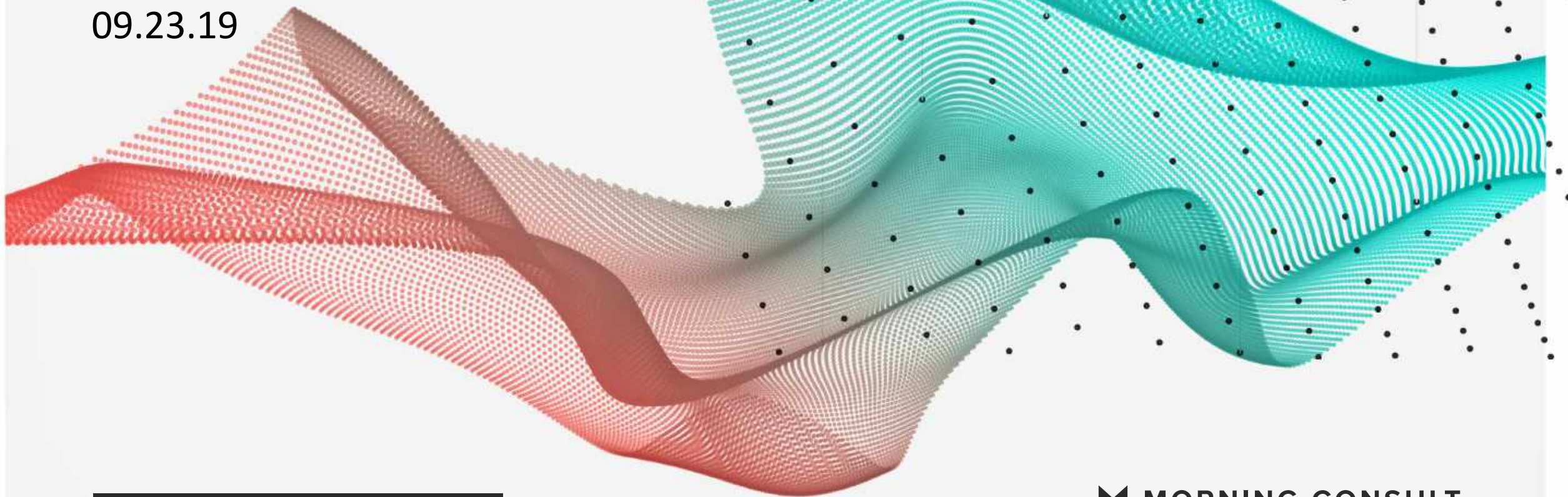


POLITICAL INTELLIGENCE

09.23.19



2020 PRIMARIES /

 MORNING CONSULT

ABOUT POLITICAL INTELLIGENCE

Morning Consult is setting a new standard for survey research.

On a daily basis, Morning Consult interviews over 5,000 registered voters across the United States. Along with 2020 presidential election data, Political Intelligence tracks the approval and electability for all governors, senators, House members, the President, and more at the national, state, and congressional district level.

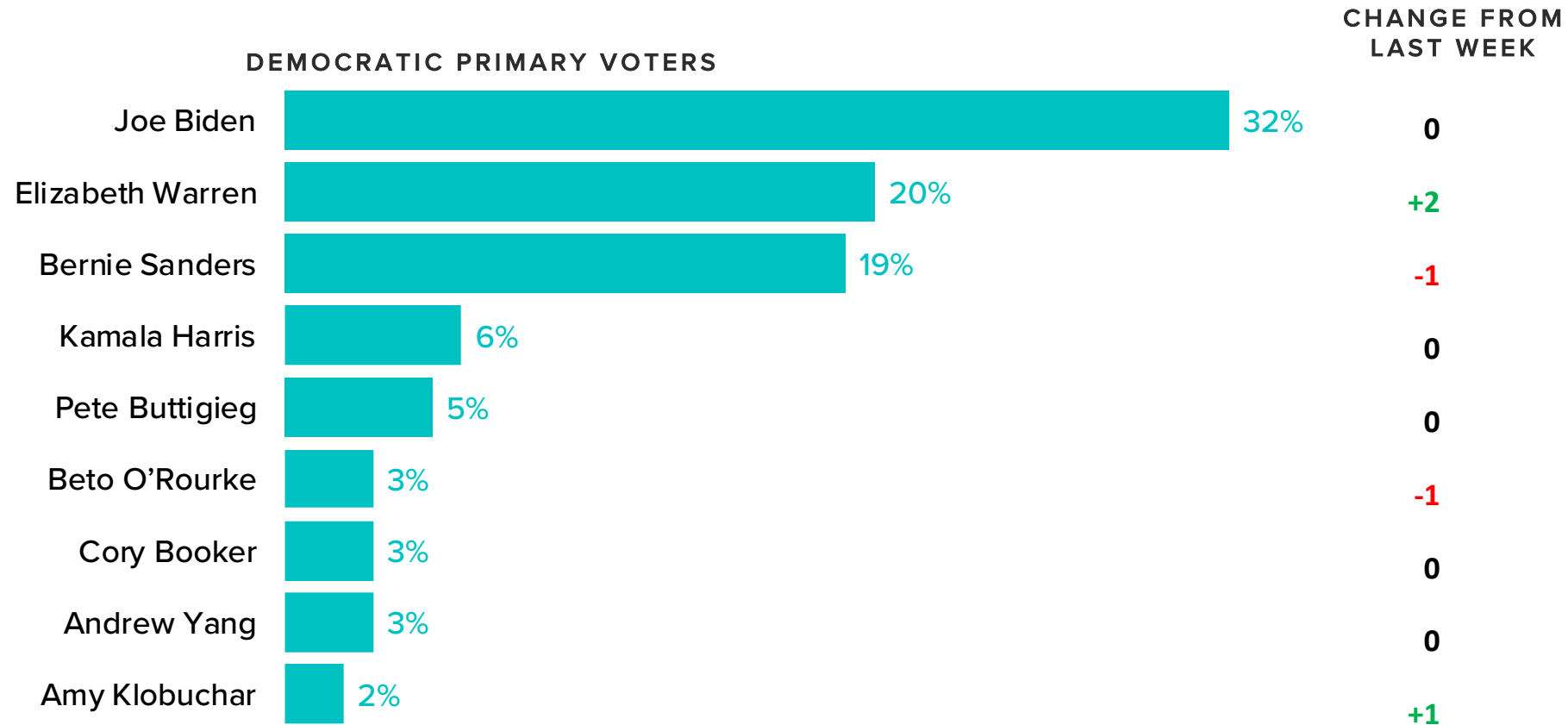
Each week, this report will use that data to deliver key new insights on where voters stand.

KEY TAKEAWAYS/ 09.23.2019

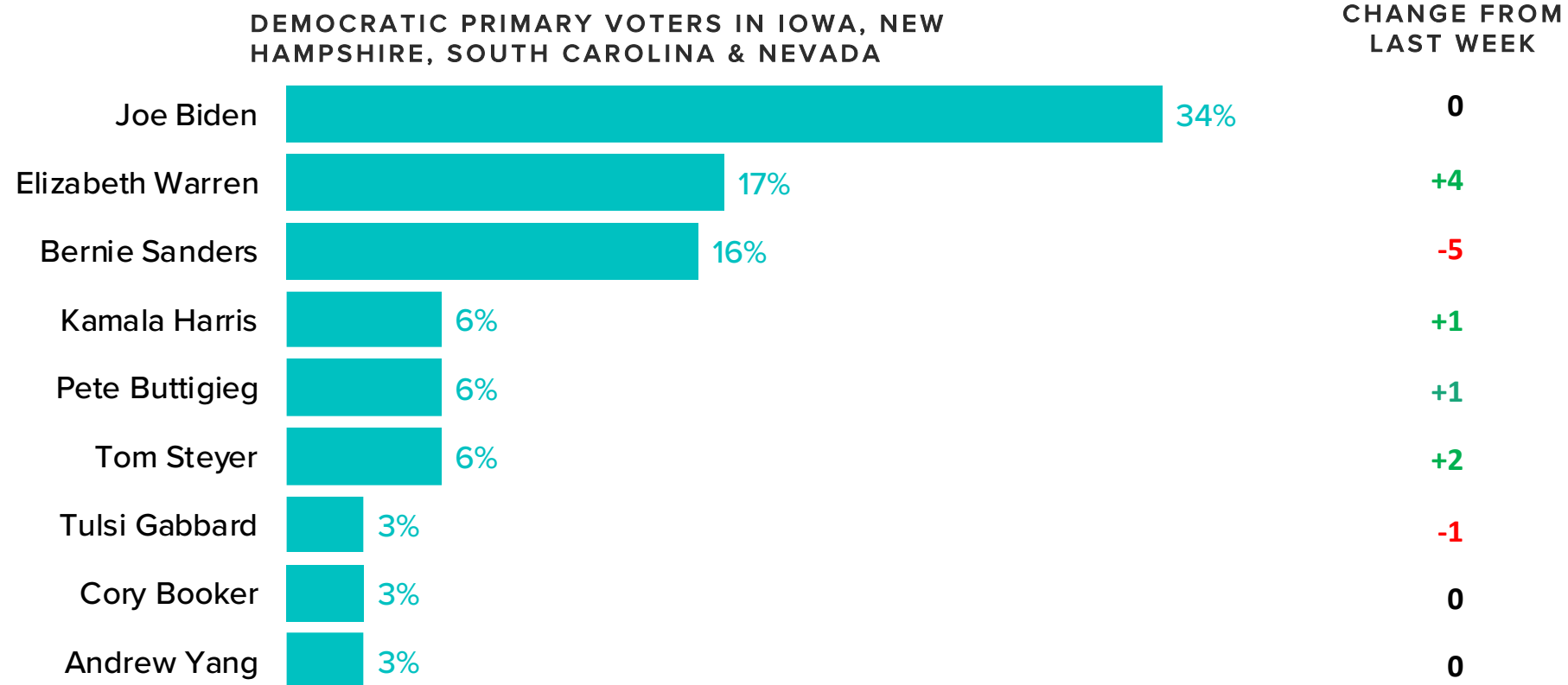
1. **Warren pulls into second place.** Warren increased her share of support by 2 percentage points nationally and 4 in early states. Meanwhile, Sanders fell 1 percentage point nationally and 5 in early states, lifting Warren over Sanders in both polls.
2. **Biden maintains lead despite news cycle.** Biden saw no change in his support nationally or in early states this week, suggesting that President Trump's attacks late last week had no immediate effect.
3. **White suburban women increasingly back Warren.** Over the summer, Warren has increased her support among white suburban women by 14 points. Sanders saw a decrease of 2 points and Biden's support fell 9 points.



WHO'S LEADING THE DEMOCRATIC PRIMARY/ ALL DEMOCRATIC PRIMARY VOTERS

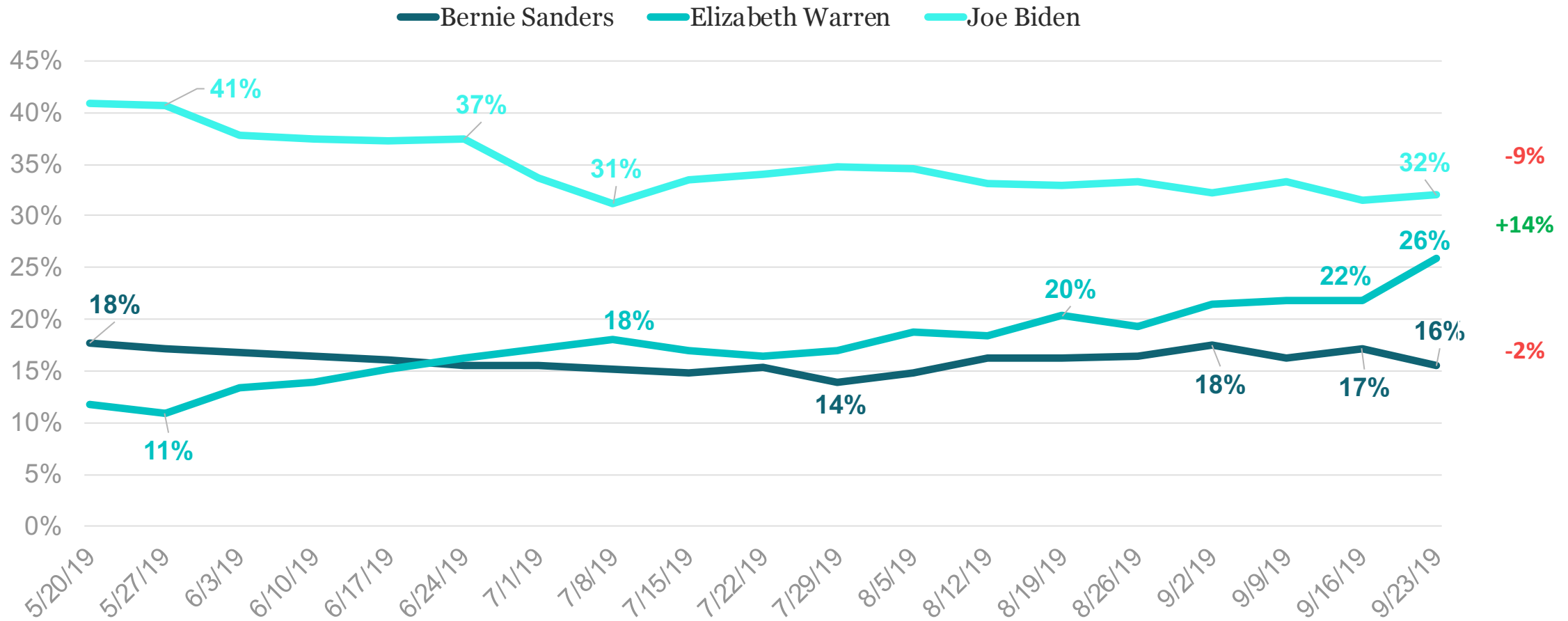


WHO'S LEADING THE DEMOCRATIC PRIMARY/ EARLY PRIMARY STATES



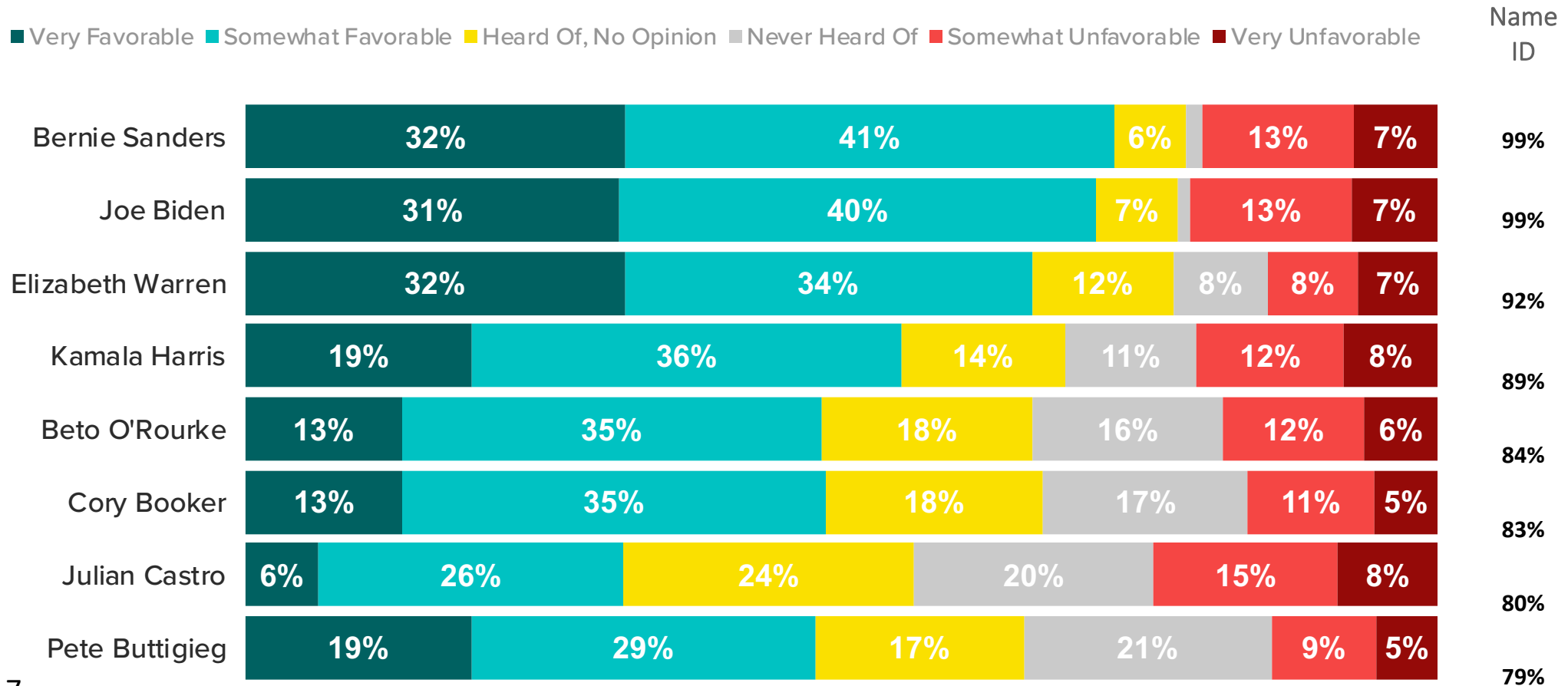
WARREN HAS GAINED GROUND WITH WHITE SUBURBAN WOMEN

Showing Vote Share Among White Suburban Women



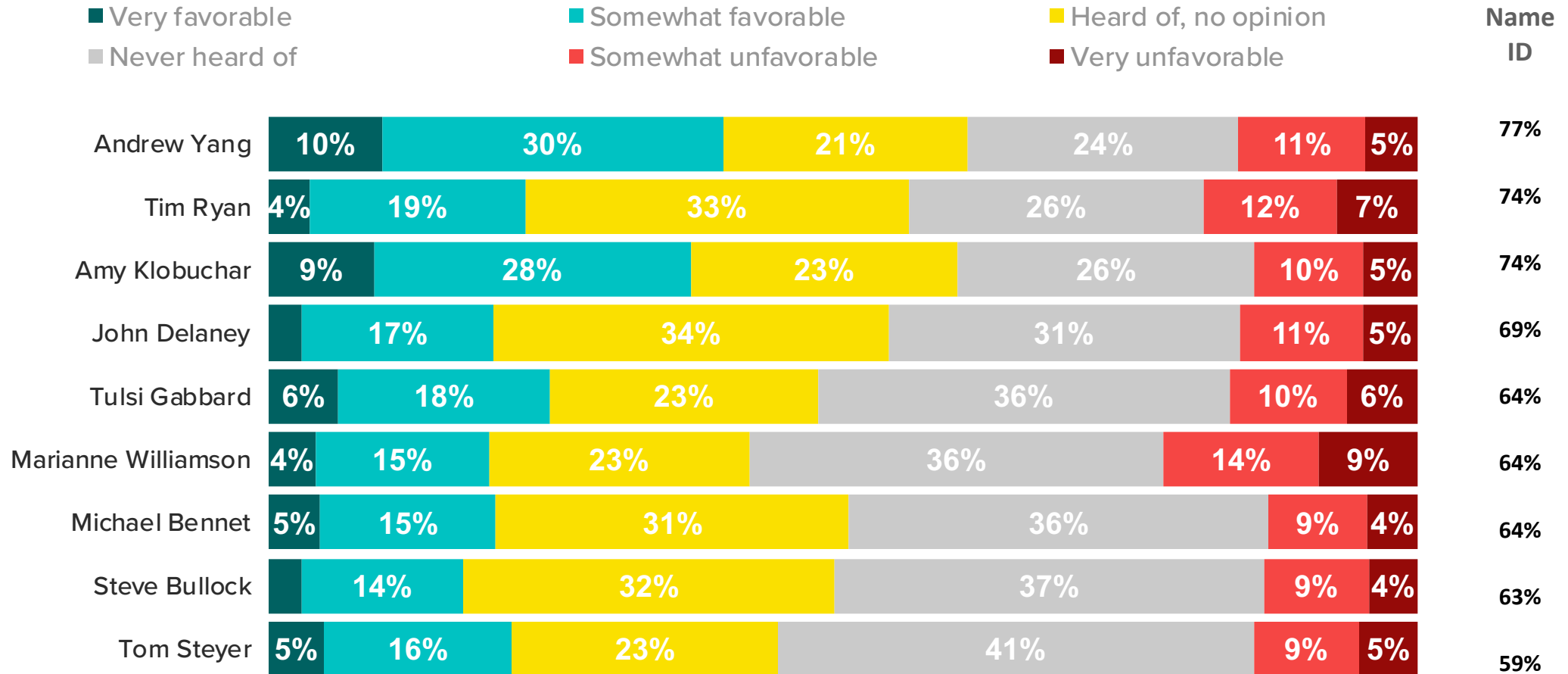
TRACKING FAVORABILITY AND NAME RECOGNITION

Ordered by name ID



TRACKING FAVORABILITY AND NAME RECOGNITION

Ordered by name ID



METHODOLOGY /

This week's report features surveys with registered voters conducted from September 16, 2019 to September 22, 2019. The interviews were conducted online and the data were weighted to approximate a target sample of registered voters based on age, race/ethnicity, gender, educational attainment, and region.

Our Democratic Primary results are reported using 17,377 interviews with registered voters who indicate they may vote in the Democratic primary or caucus. For those who say don't know or no opinion, they are asked to pick a candidate they are leaning towards, which are factored into the results. The margin of error for potential Democratic primary voters is +/- 1%.

Which Candidates Have Momentum in Early Primary States?

We have included an 'Early Primary States' demographic throughout this report to showcase who has momentum going into the primary elections. The numbers reflect voters who live in Iowa, New Hampshire, South Carolina, and Nevada.



**SIGN UP TO RECEIVE THIS
REPORT EARLY EACH WEEK**

CLICK HERE TO SIGN UP



CONTACT



Business Development
BD@MorningConsult.com



News Media
Press@MorningConsult.com

OFFICES

NEW YORK



SAN FRANCISCO



CHICAGO



WASHINGTON

