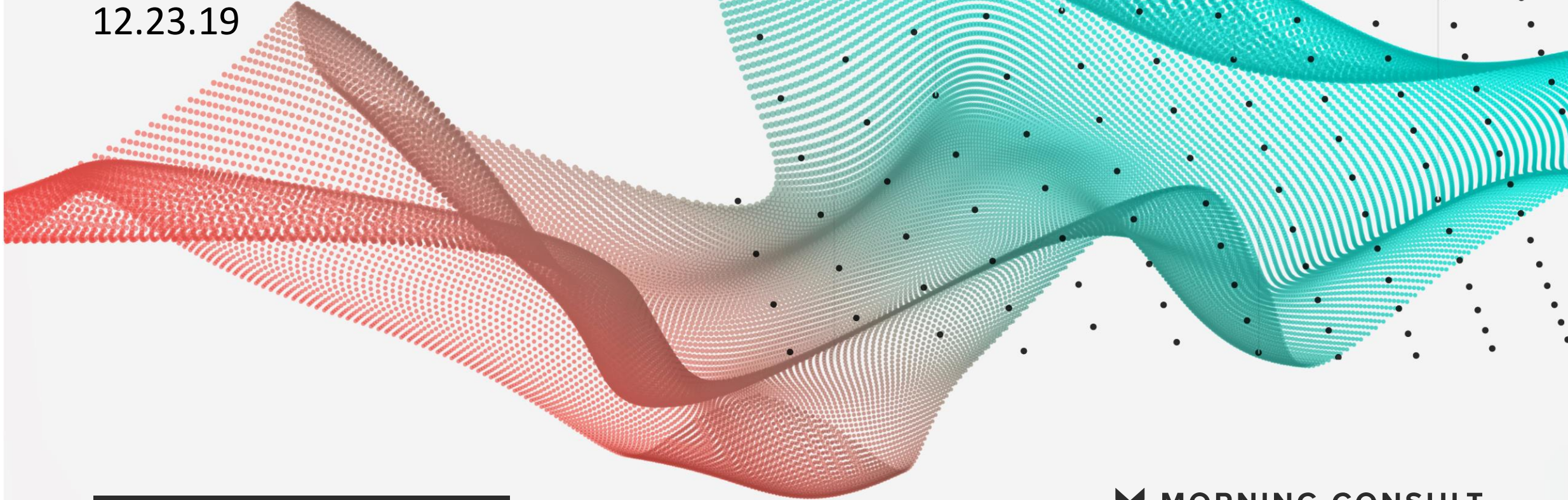


POLITICAL INTELLIGENCE /

12.23.19



2020 PRIMARIES /

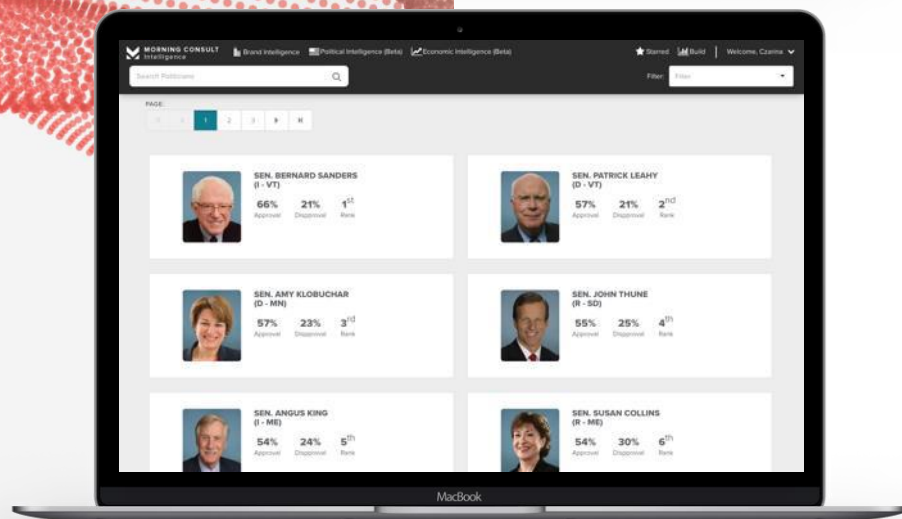
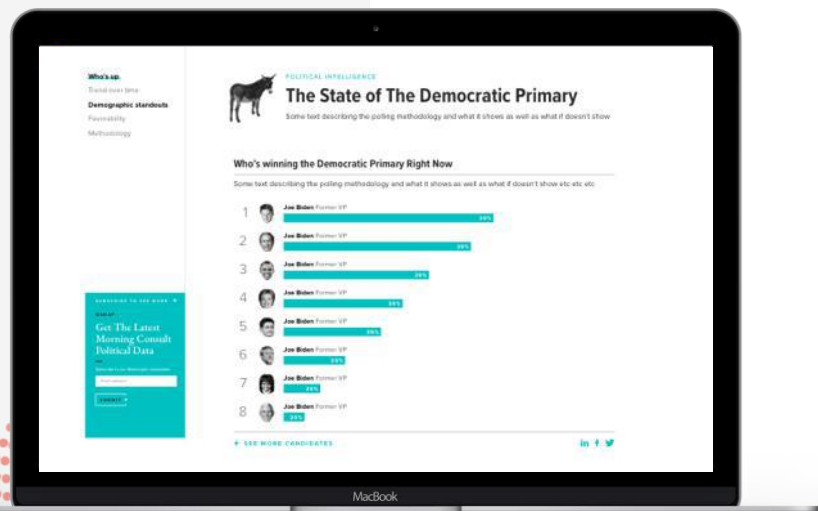
 MORNING CONSULT

ABOUT POLITICAL INTELLIGENCE

Morning Consult sets a new standard for survey research.

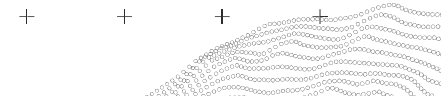
Every day, Morning Consult interviews more than 5,000 registered voters across the United States. In addition to 2020 presidential election data, Political Intelligence tracks the approval and electability for all governors, senators, House members, the president and more at national, state, and congressional district levels.

Each week, this report uses that data to deliver key new insights on where voters stand.

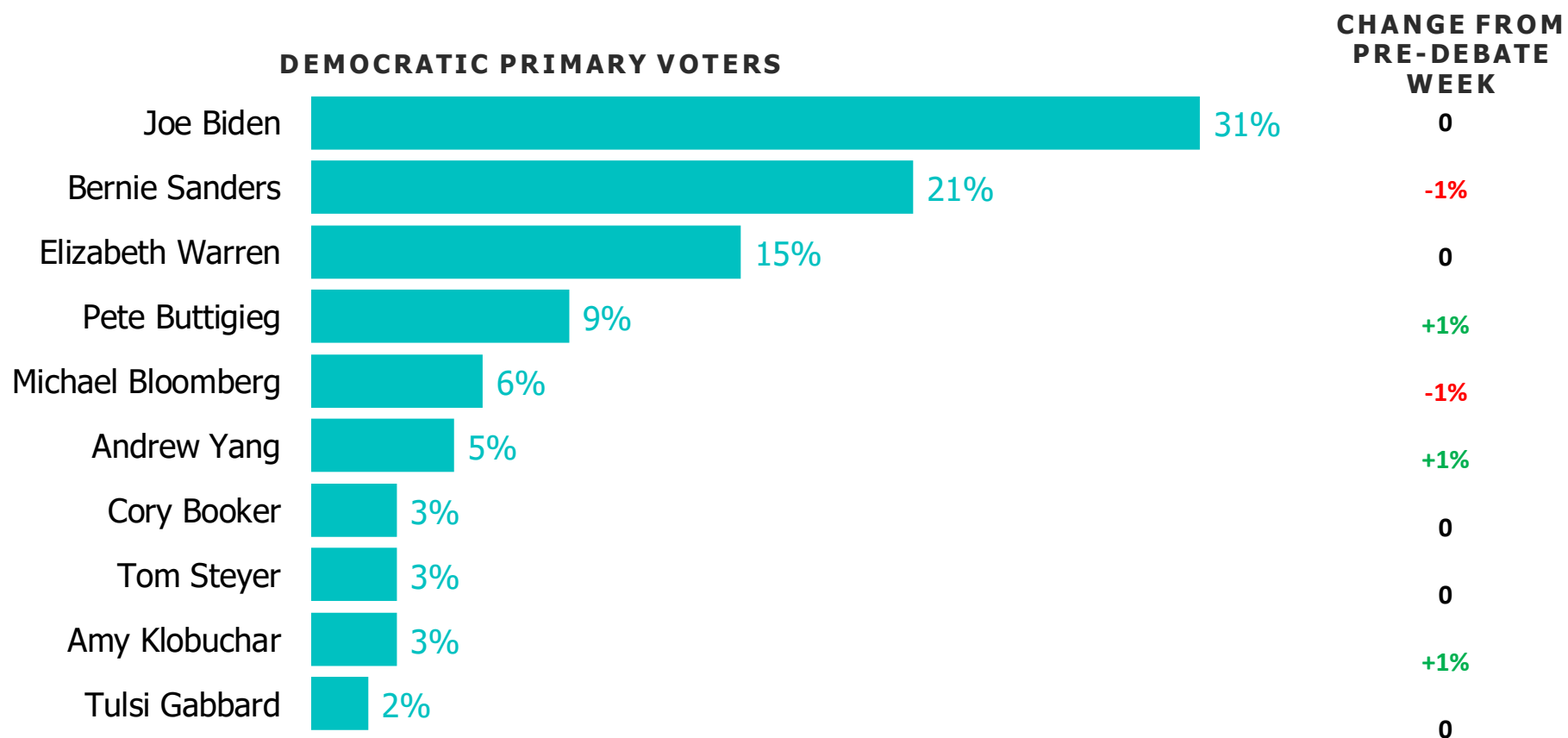


KEY TAKEAWAYS/ 12.23.2019

1. **Lesser-known candidates capitalize on smaller debate stage.** While the state of the race was statistically unchanged following the seven-candidate debate in Los Angeles, three participants – Andrew Yang, Amy Klobuchar and Tom Steyer – all improved their name recognition and net favorability with Democratic primary voters.
2. **Gabbard pays for “present” vote.** Tulsi Gabbard surpassed Michael Bloomberg as the most disliked candidate in the race following her “present” votes on articles of impeachment against President Trump, with 30% of Democratic primary voters viewing her unfavorably (+7% from the previous week).
3. **Buttigieg supporters sour on Warren.** Before the debate, a plurality (24%) of Pete Buttigieg’s supporters chose Elizabeth Warren as their second choice. Now, 22% choose Biden and 19% support Warren. However, 10% of Buttigieg supporters are also now backing Klobuchar, despite her debate-stage attacks on his lack of electoral success.

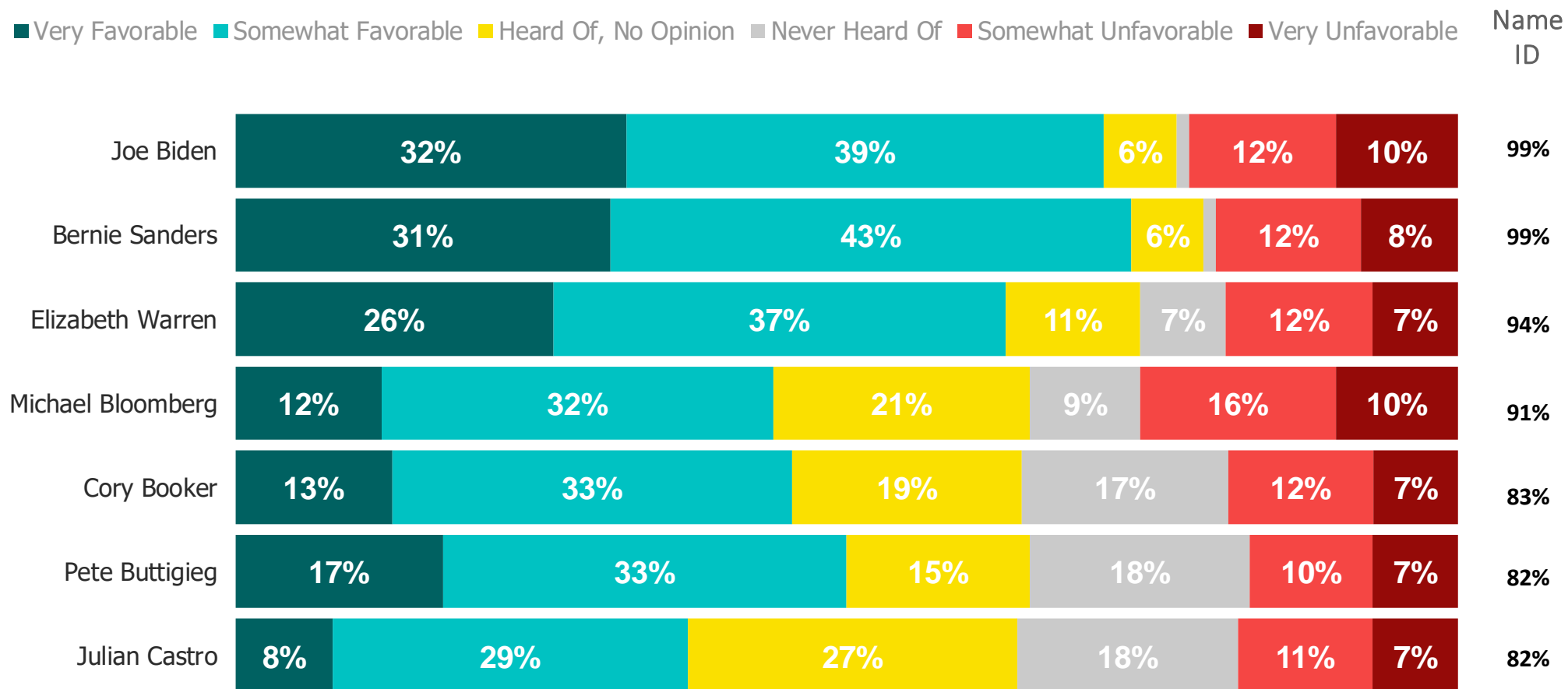


WHO'S LEADING THE DEMOCRATIC PRIMARY / ALL DEMOCRATIC PRIMARY VOTERS



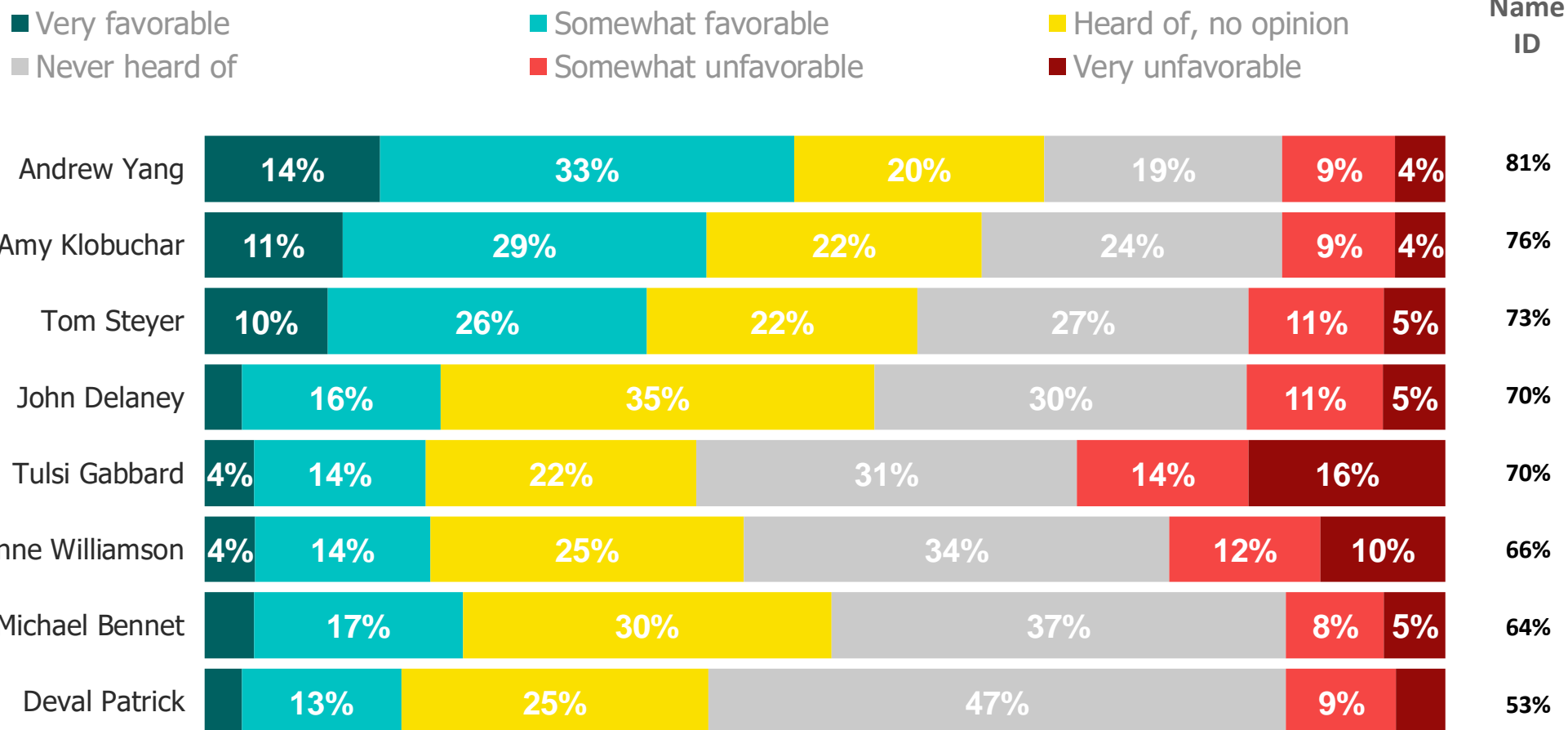
TRACKING FAVORABILITY AND NAME RECOGNITION

Ordered by name ID, December 20th-22nd 2019



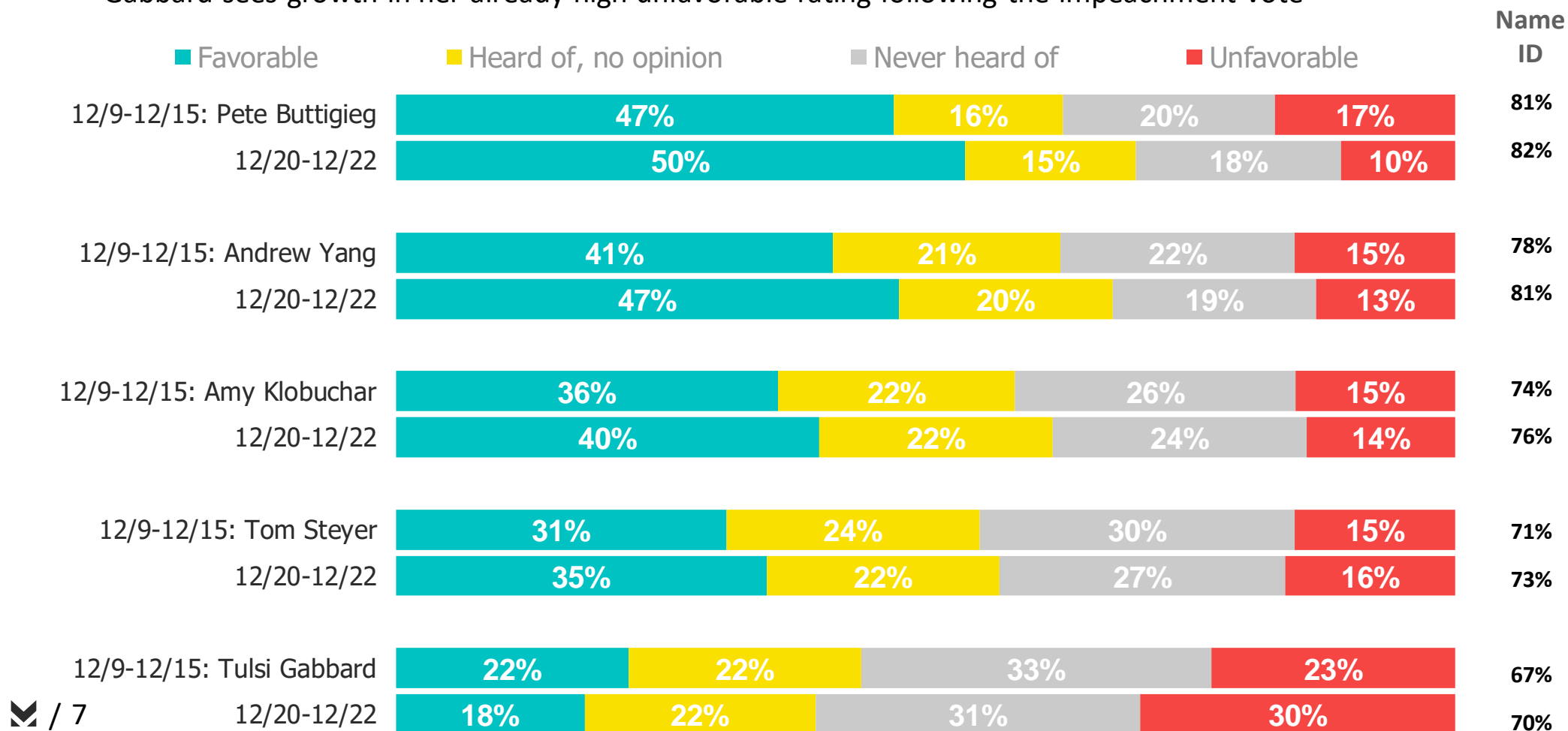
TRACKING FAVORABILITY AND NAME RECOGNITION

Ordered by name ID, December 20th-22nd 2019



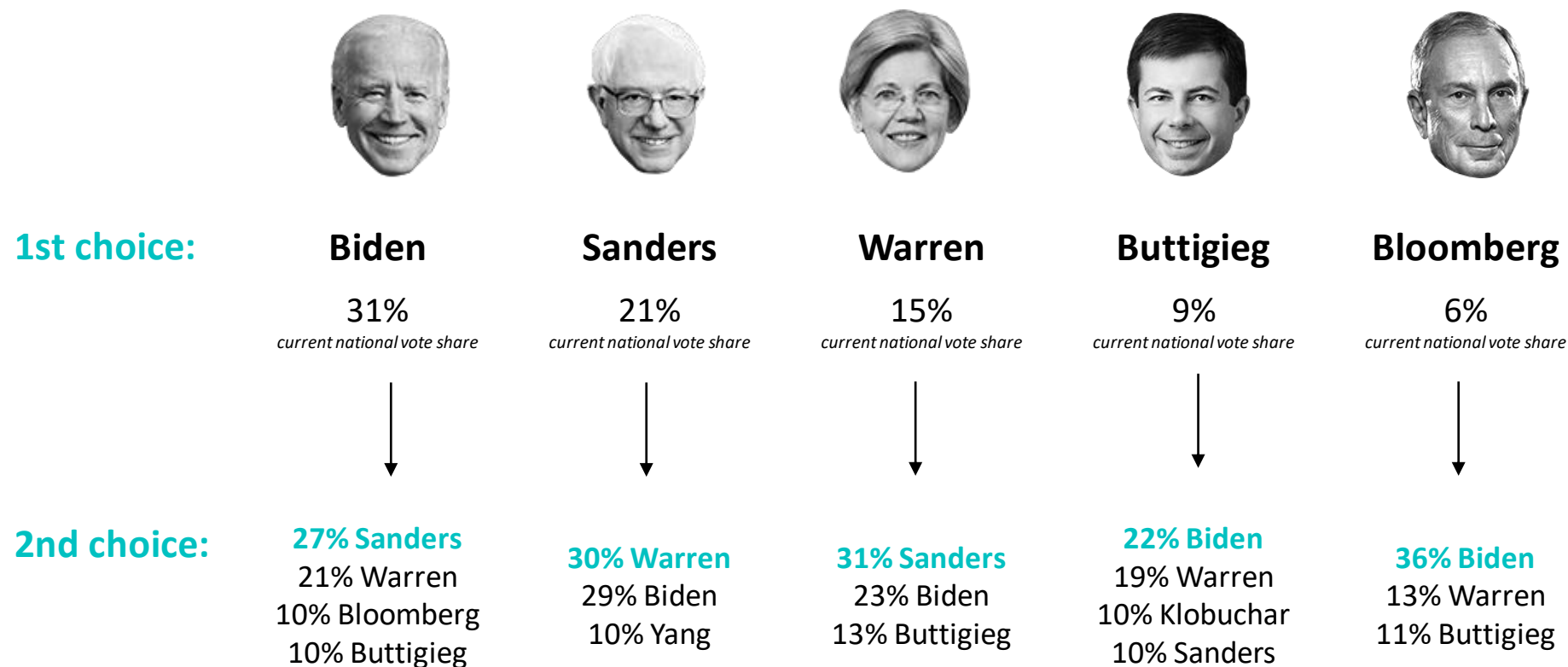
LESSER-KNOWN CANDIDATES SEE A BOOST FOLLOWING SMALLER DEBATE STAGE

Gabbard sees growth in her already high unfavorable rating following the impeachment vote



SECOND CHOICE SUPPORT BY CANDIDATE

After voters registered their first choice, they were asked a follow-up about who they would choose as a second option. The results below show where the supporters for a selection of leading candidates could go next.



METHODOLOGY /

This week's report features surveys with registered voters conducted from December 20, 2019, through December 22, 2019. The interviews were conducted online and the data were weighted to approximate a target sample of registered voters based on age, race/ethnicity, gender, educational attainment, and region.

Our Democratic primary results are reported using 7,178 interviews with registered voters who indicated they may vote in the Democratic primary or caucus. For those who say don't know or no opinion, they are asked to pick a candidate they are learning toward, which are factored into the results. The margin of error for potential Democratic primary voters is +/- 1%.

**SIGN UP TO RECEIVE THIS
REPORT EARLY EACH WEEK**

CLICK HERE TO SIGN UP

CONTACT



Business Development
BD@MorningConsult.com



News Media
Press@MorningConsult.com

OFFICES

NEW YORK



SAN FRANCISCO



CHICAGO



WASHINGTON

